

Need a Mortgage in principle to make offers? Call us now for quick assistance!
0121 775 0101



Do you need to sell? Start your journey now! Call us we can help.
0121 775 0101



SCAN FOR MORE INFO
SIZE - 1493.6 Sq Ft
TENURE - Freehold
COUNCIL TAX - Solihull MBC - E
BROADBAND - Upload Max 1GBps
Download Max 1GBps
MOBILE - EE Three O2 Vodafone
EPC - B - 83
PARKING - For at least 4 Cars
FLOODRISK - Very Low
SERVICES - Mains
COVENANTS - N/A

KINETON GREEN ROAD

Offers Over £550,000

This inviting four bedroom family home offers practical living spaces and potential for extension to the rear and into the loft. Downstairs, a bright dining room and lounge with patio access provide comfort, while a modern kitchen and garage offer convenience. Upstairs, four double bedrooms and a family bathroom cater to family needs. Outside, a private garden with a summer house presents opportunities for outdoor living. Conveniently located near schools, amenities, and transport links, this home is ideal for those seeking a blend of comfort and potential.

FEATURES

- Four Double Bedroom Family Home
- Modern Breakfast/Kitchen
- Two Reception Rooms
- Lean-To and Garage
- Four Good Size Bedrooms
- Family Bathroom
- Garden with Summer House
- Potential to Extend (STP)
- Large Driveway for Multiple Cars
- Conveniently Located for Amenities and Train Station

Are you an investor interested in expanding your portfolio?

Call 0121 775 0101 to provide your investment criteria for alerts.



SCAN TO VIEW OUR WEEKLY FILMS & SUBSCRIBE

Sneak Peeks

Every week, we unveil "Sneak Peeks," a feature showcasing exclusive properties before they hit Rightmove and other platforms.

The Landlord Club

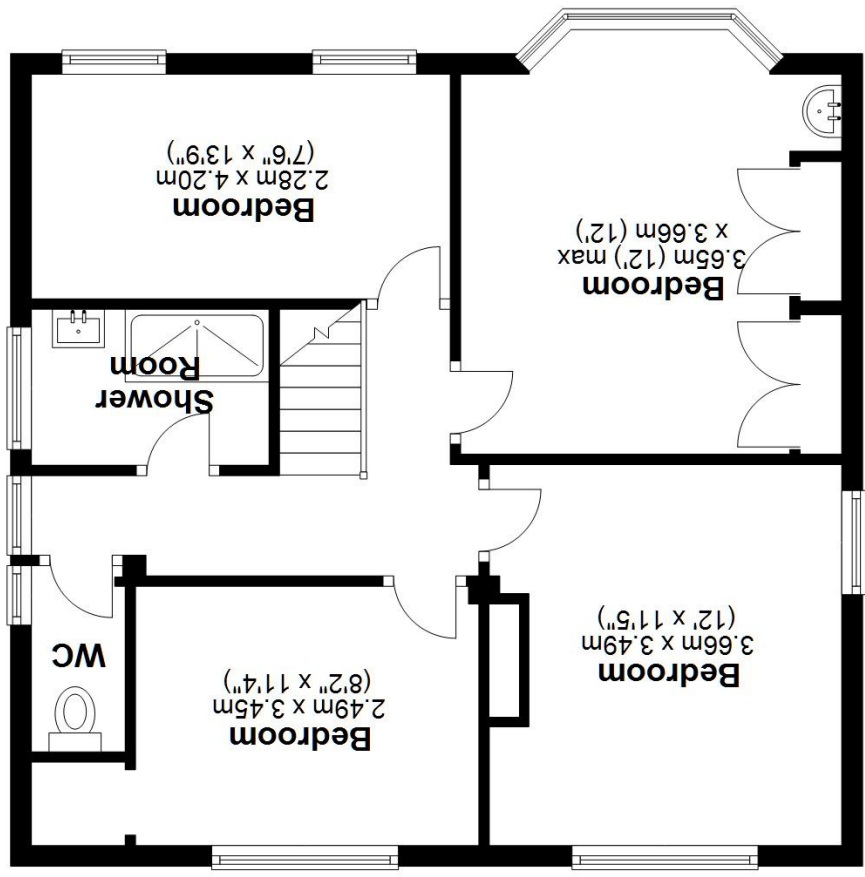
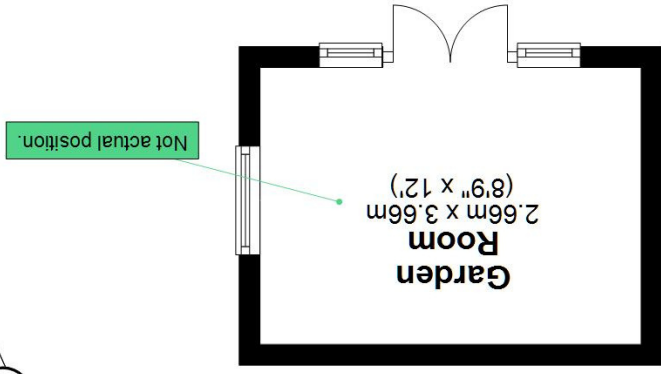
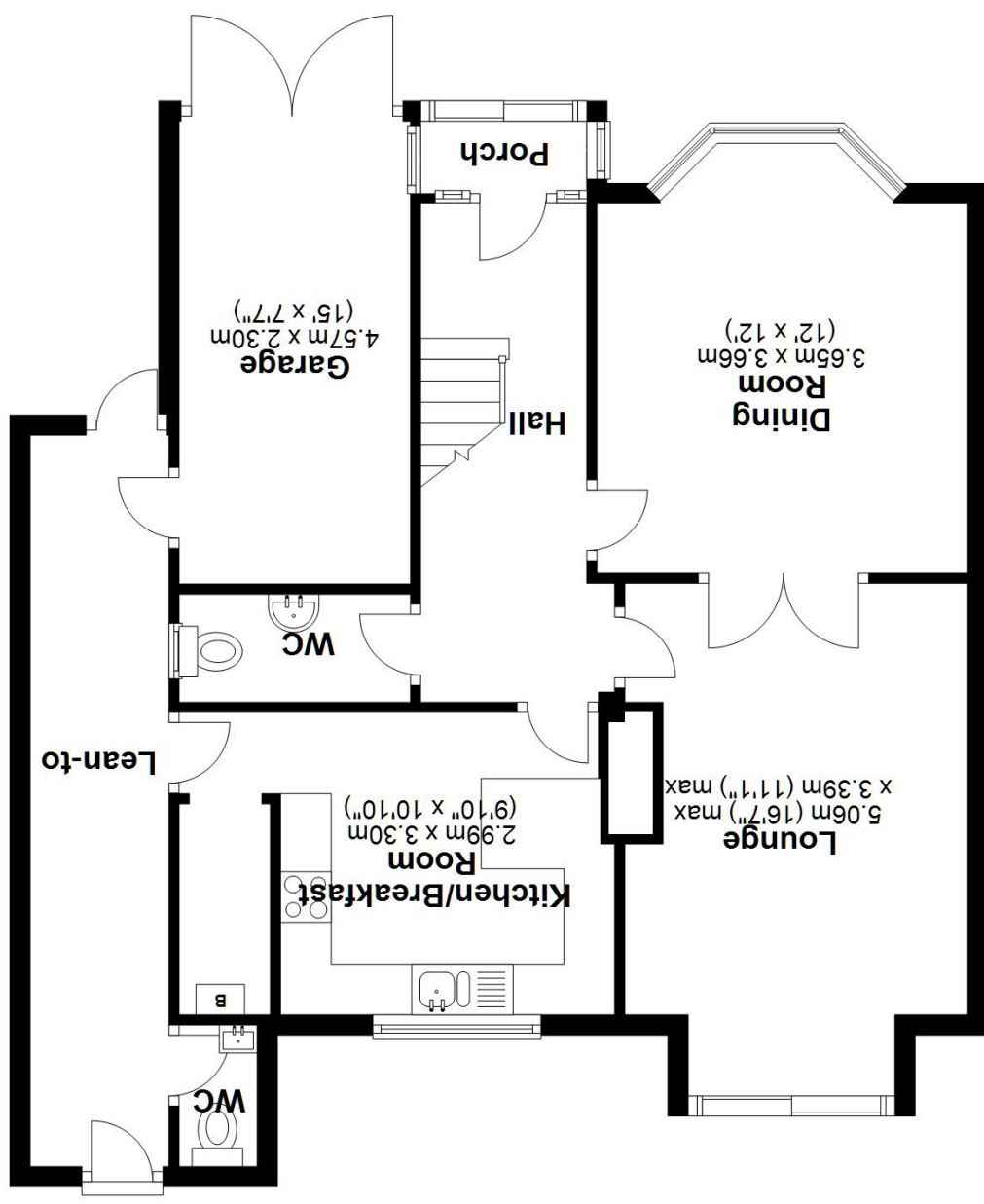
Join our Landlord Club for weekly updates on legislation, market trends, and our Letting Director's 'Investment Pick of the Week' for optimal ROI.

HTSPMD

Tune into 'How's The Solihull Property Market Dom' weekly for a quick, insightful snapshot of the market.

The Mortgage Update

Get weekly insights and the best deals with our Mortgage Update, your shortcut to navigating the complex mortgage landscape confidently.



Main area: Approx. 138.8 sq. metres (1493.6 sq. feet)
 Plus garden room, approx. 9.7 sq. metres (104.8 sq. feet)