

**Need a Mortgage in principle to make offers?** Call us now for quick assistance!  
**0121 775 0101**



**Do you need to sell? Start your journey now!** Call us we can help.  
**0121 775 0101**



**SCAN FOR MORE INFO**  
**SIZE** - 1433 Sq Ft  
**TENURE** - Freehold  
**COUNCIL TAX** - Solihull MBC - E  
**BROADBAND** - Upload Max 1000 Mbps  
 Download Max 1000 Mbps  
**MOBILE** - EE Three O2 Vodafone  
**EPC** - C - 71  
**PARKING** - For at least 3 Cars  
**FLOODRISK** - Very Low  
**SERVICES** - Mains  
**COVENANTS** - N/A

## FULLBROOK CLOSE

Offers in Excess of £550,000

This delightful four bedroom detached family home is set on a lovely quiet cul-de-sac in Monkspath. The property is modern and spacious throughout and is set in a great school catchment making it an ideal home for a growing family.

### FEATURES

- Delightful Four Bedroom Detached House
- Dual Aspect Lounge/Diner
- Re-Fitted Breakfast Kitchen
- Utility and Playroom
- Principal Bedroom with En-Suite
- Three Further Spacious Bedrooms
- Modern Family Bathroom
- South Westerly Facing Garden
- Parking for Multiple Vehicles
- Convenient Location

**Are you an investor interested in expanding your portfolio?**

**Call 0121 775 0101 to provide your investment criteria for alerts.**



SCAN TO VIEW OUR WEEKLY FILMS & SUBSCRIBE

### Sneak Peeks

Every week, we unveil "Sneak Peeks," a feature showcasing exclusive properties before they hit Rightmove and other platforms.

### The Landlord Club

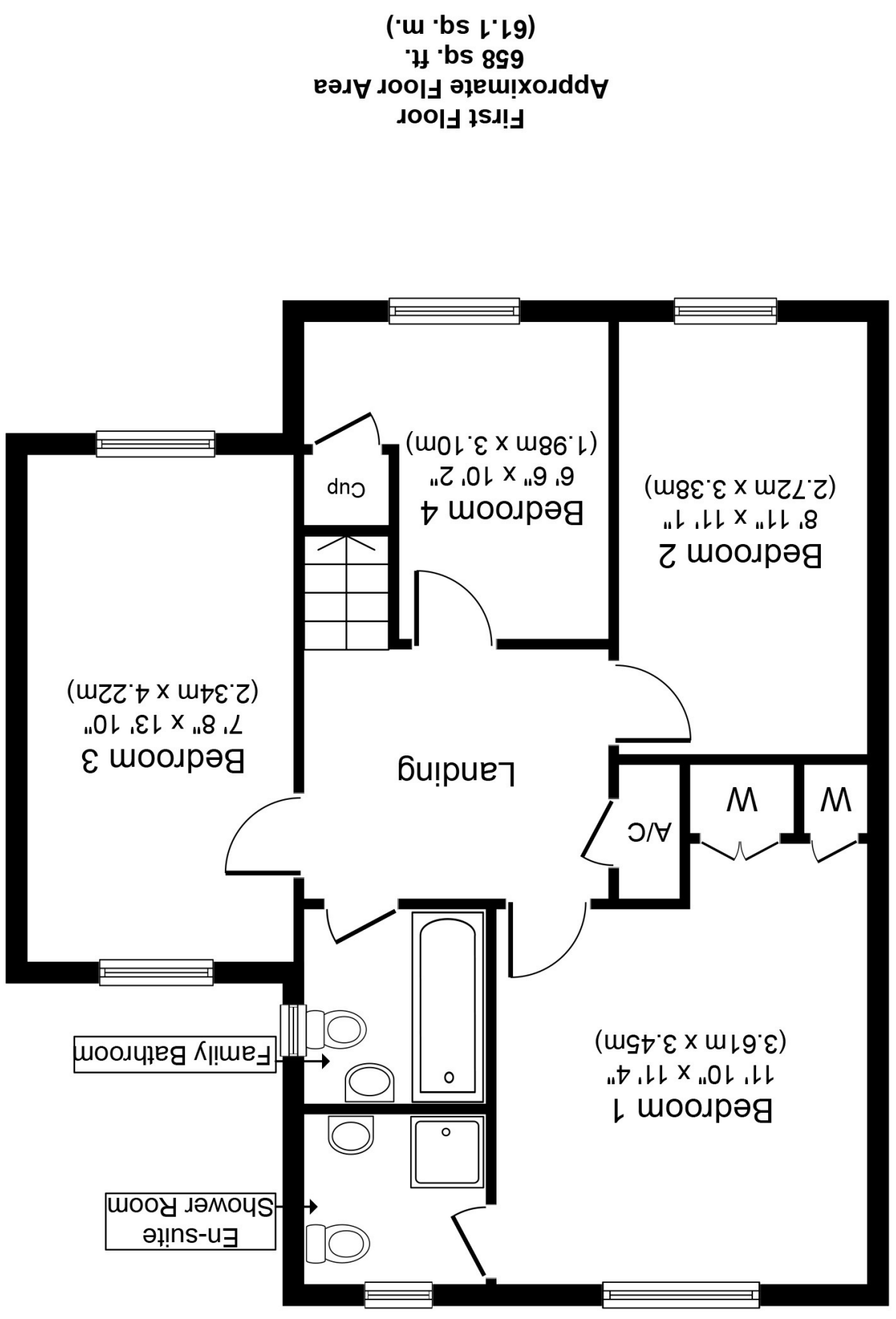
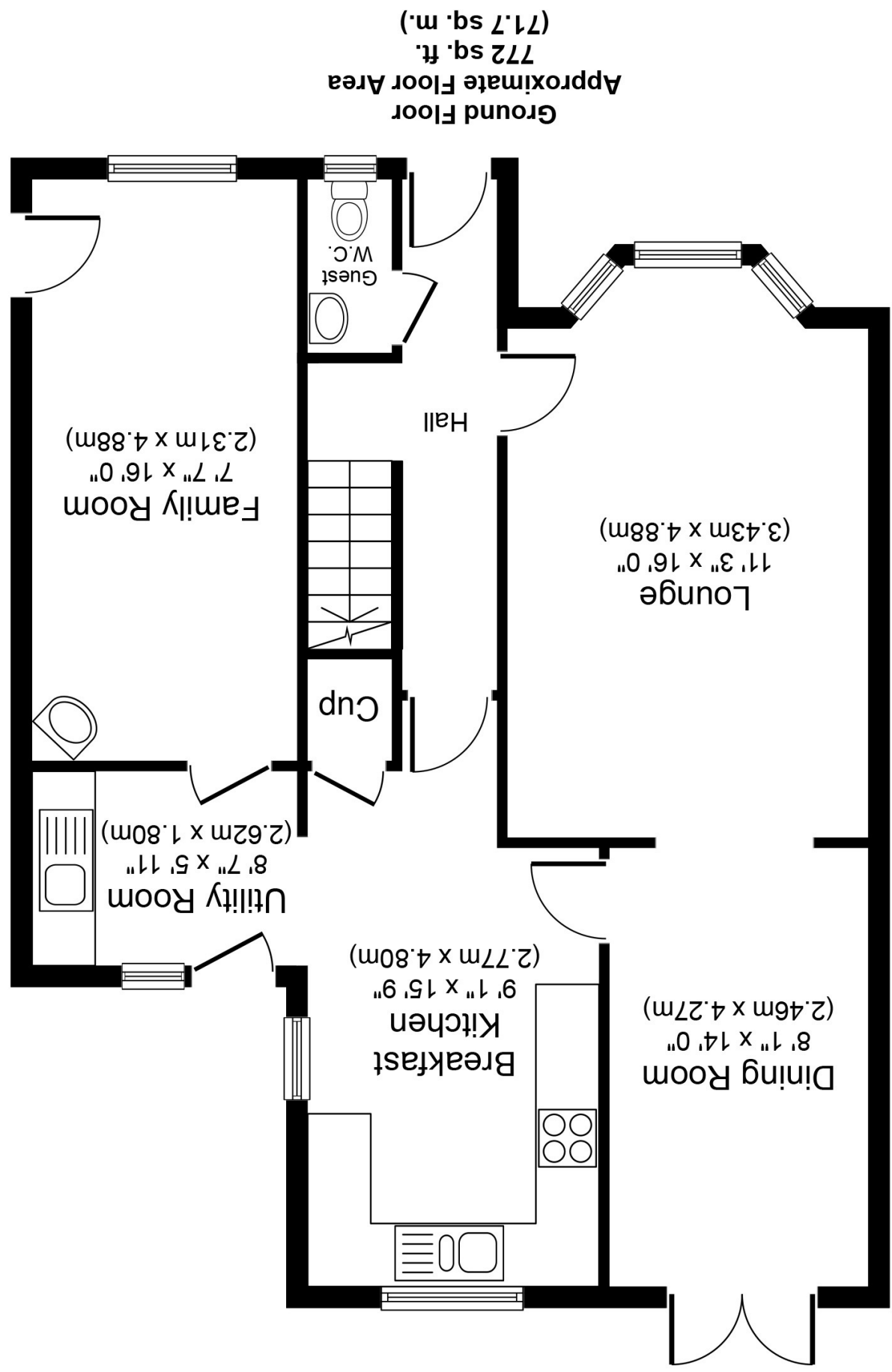
Join our Landlord Club for weekly updates on legislation, market trends, and our Letting Director's 'Investment Pick of the Week' for optimal ROI.

### HTSPMD

Tune into 'How's The Solihull Property Market Dom' weekly for a quick, insightful snapshot of the market.

### The Mortgage Update

Get weekly insights and the best deals with our Mortgage Update, your shortcut to navigating the complex mortgage landscape confidently.



Whilst every attempt has been made to ensure the accuracy of the floor plan contained here, measurements of doors, windows, rooms and any other items are approximate and no responsibility is taken for any error, omission, or mis-statement. The measurements should not be relied upon for valuation, transaction and/or funding purposes. This plan is for illustrative purposes only and should be used as such by any prospective purchaser or tenant. The services, systems and appliances shown have not been tested and no guarantee as to their operability or efficiency can be given.

Copyright V360 Ltd 2024 | www.houseviz.com