

Need a Mortgage in principle to make offers? Call us now for quick assistance!
0121 775 0101



Do you need to sell? Start your journey now! Call us we can help.
0121 775 0101



DORMSTON CLOSE

Guide Price of £750,000



SCAN FOR MORE INFO

SIZE - 1894 Sq Ft
TENURE - Freehold
COUNCIL TAX - Solihull MBC - G
BROADBAND - Upload Max 1000 Mbps
Download Max 1000 Mbps
MOBILE - EE O2 Vodaphone
EPC - D - 61
PARKING - For at least 4 Cars
FLOODRISK - Very Low
SERVICES - Mains
COVENANTS - N/A

Are you an investor interested in expanding your portfolio?

Call 0121 775 0101 to provide your investment criteria for alerts.

Explore this fabulous four bedroom bungalow in Solihull, featuring spacious reception rooms, a contemporary kitchen and an idyllic private garden, all on one convenient level. With a large living room, light and airy dining room modern breakfast kitchen and utility room. Four good sized bedrooms, an en-suite and a family bathroom. A beautifully landscaped private garden with generous driveway and double garage complete this fabulous home.

FEATURES

- Four Good Sized Bedrooms
- Large Lounge
- Modern Breakfast/Kitchen
- Dining Room
- Conservatory
- Utility and Guest Cloakroom
- Family Bathroom
- Spacious Patio and Garden
- Ample Parking and Double Garage

Sneak Peeks

Every week, we unveil "Sneak Peeks," a feature showcasing exclusive properties before they hit Rightmove and other platforms.

The Landlord Club

Join our Landlord Club for weekly updates on legislation, market trends, and our Letting Director's 'Investment Pick of the Week' for optimal ROI.

HTSPMD

Tune into 'How's The Solihull Property Market Dom' weekly for a quick, insightful snapshot of the market.

The Mortgage Update

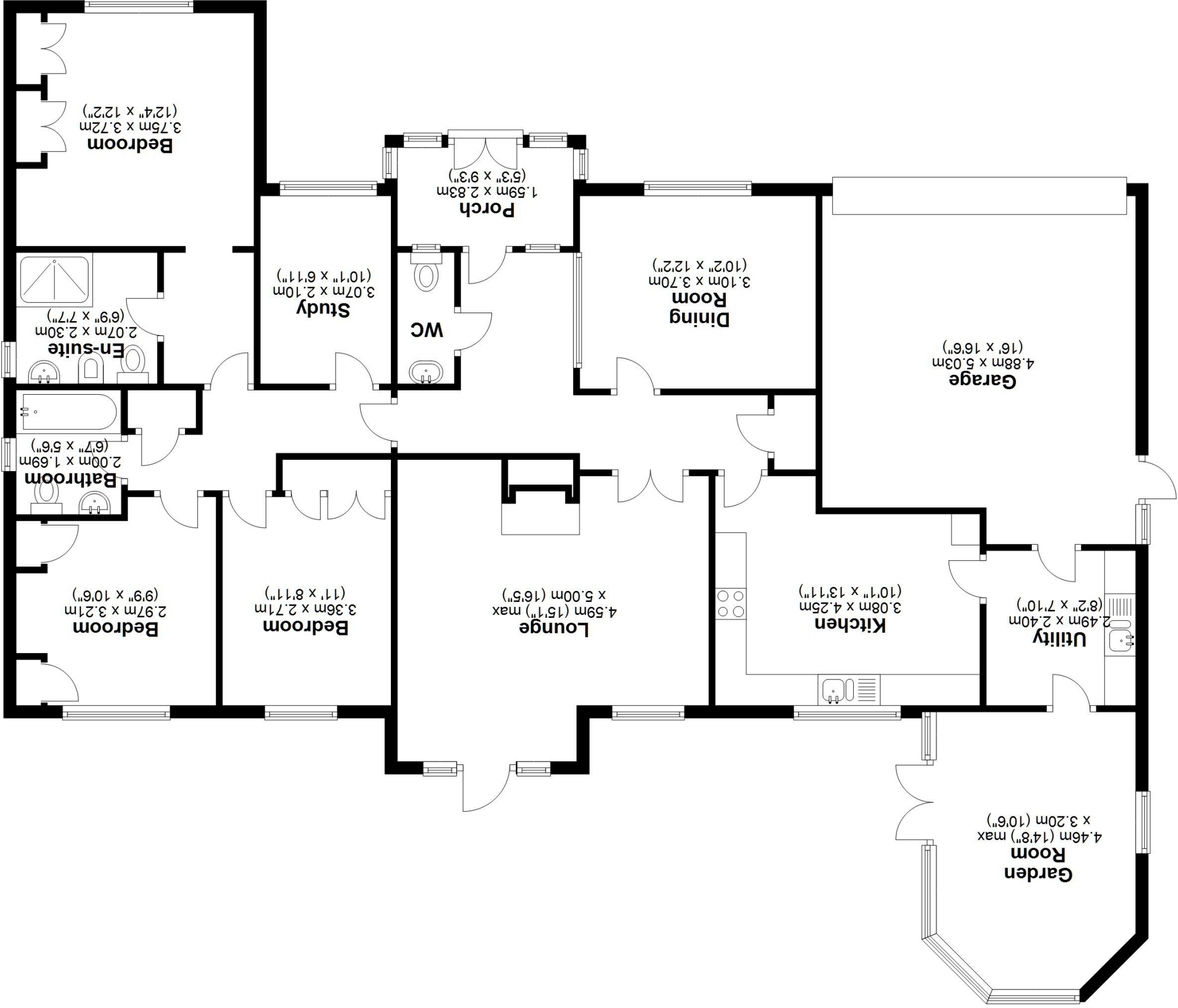
Get weekly insights and the best deals with our Mortgage Update, your shortcut to navigating the complex mortgage landscape confidently.



SCAN TO VIEW OUR WEEKLY FILMS & SUBSCRIBE



Floor Plan
Approx. 176.0 sq. metres (1894.2 sq. feet)



Total area: approx. 176.0 sq. metres (1894.2 sq. feet)

This floor plan is for illustration purposes only, this is not intended to be a measured/scaled survey or comply with RICS guidelines. All measurements (including total floor area) openings, orientation and floor area are approximate. No details are guaranteed, they cannot be relied upon for any purpose and do not form part of any agreement. A party must rely upon its own inspection(s). No responsibility is taken for any error, omission, or mis-statement.
Plan produced using PlanUp.