



- Stunning Family Home
- Extended Property
- Popular Location
- Viewings Strongly Advised

24 St Francis Avenue, Solihull, B91 1EB

A BEAUTIFULLY PRESENTED and EXTENDED family home which must be viewed to appreciate the accommodation on offer. The property is ideally located for excellent local schools, Solihull town centre and it's fantastic amenities, the Midlands motorway network and Birmingham International Airport.



Property Description

DETAILS

This spacious family home simply must be viewed to appreciate the décor and accommodation on offer which in brief affords porch, entrance hallway with guest cloakroom, lounge with bay window overlooking the front elevation, study and stunning breakfast kitchen with French doors opening out to the rear garden and door into a separate utility room.

To the first floor there are four good sized bedrooms, a family bathroom and an en-suite shower room to the master bedroom.

OUTSIDE

To the front of the property there is driveway parking leading up to the single garage. Whilst to the rear is a private mainly laid to lawn garden with patio area.

VIEWINGS

At short notice with DM & Co. Homes on 0121 775 0101 or by email sales@dmandcohomes.co.uk.





GENERAL INFORMATION

Tenure: We are advised by the vendor that the property is Freehold with vacant possession upon completion. However, we would advise that you check this with your legal advisor before exchanging contracts.

Services: All mains services are connected to the property. However, it is advised that you confirm this at point of offer.

Local Authority: Solihull Metropolitan Borough Council.

OTHER SERVICES

DM & Co are pleased to offer the following services:-

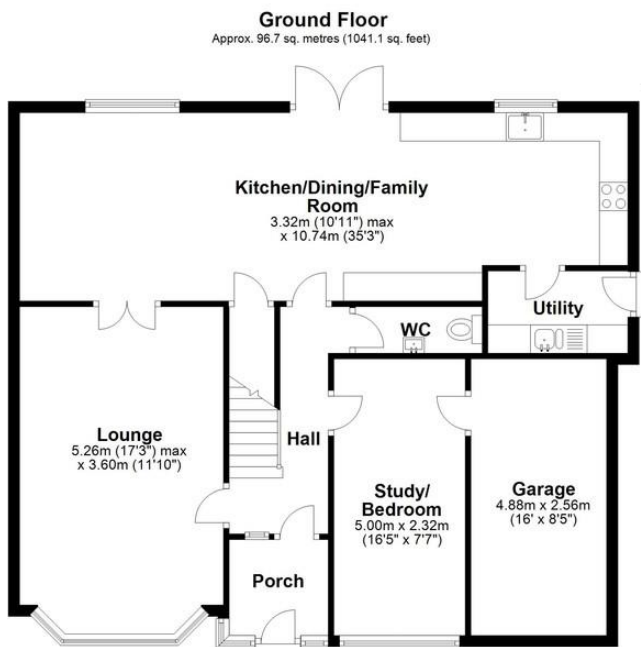
Residential Lettings: If you are considering letting your property, please contact the office on 0121 775 0101.

Mortgage Services: If you would like advice on the best mortgages available, please contact us on 0121 775 0101.

WANT TO SELL YOUR PROPERTY?

Call DM & Co. Homes on 0121 775 0101 to arrange your FREE no obligation market appraisal and find out why we are Solihull's fastest growing Estate Agency.

Agents Note: Whilst every care has been taken to prepare these sales particulars, they are for guidance purposes only. All measurements are approximate are for general guidance purposes only and whilst every care has been taken to ensure their accuracy, they should not be relied upon and potential buyers are advised to recheck the measurements



Total area: approx. 161.0 sq. metres (1733.4 sq. feet)

Please note this plan is for illustration purposes only, this is not intended to be a measured survey or comply with RICS guidelines. All measurements are approximate and should be checked by prospective buyers/tenants. No responsibility is taken for any error, omission, or mis-statement.
Plan produced using PlanUp.