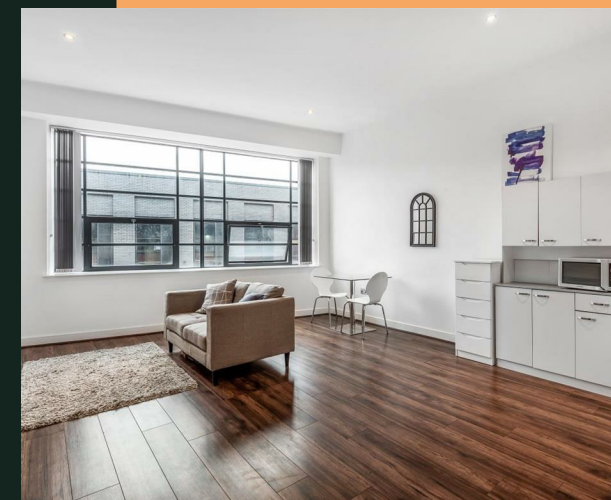


Kettleworks, Pope Street, B1



PROPERTY ADDRESS
 241 Kettleworks, Pope Street
 Birmingham
 West Midlands
 B1 3DU

Energy Efficiency Rating		Current	Potential
<i>Very energy efficient - lower running costs</i>			
(92 plus) A			
(81-91) B			
(69-80) C			
(55-68) D		64	64
(39-54) E			
(21-38) F			
(1-20) G			
<i>Not energy efficient - higher running costs</i>			
England & Wales	EU Directive 2002/91/EC		

- Available late September
- Jewellery Quarter location
- Open plan living
- Fully furnished
- 24-hour concierge

The apartment come furnished and briefly comprises:

Open plan living area with modern kitchen including white goods, large double bedroom and contemporary three-piece bathroom suite with shower over bath.

Rent: £900 pcm
Holding deposit: £207
Deposit: £1,038

Council Tax band C

Available late September, pending acceptable referencing.

