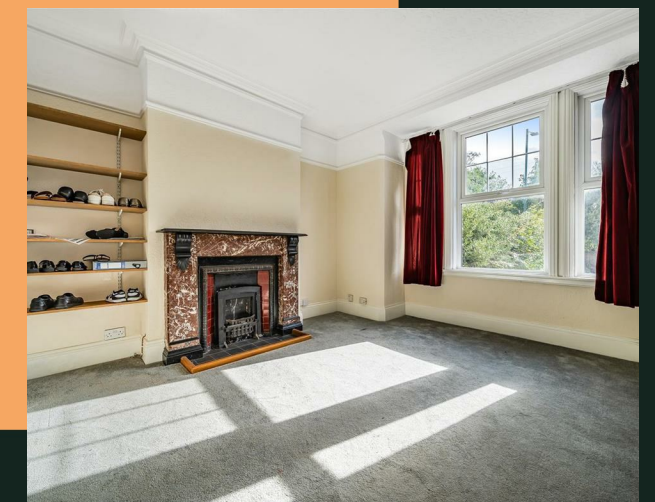
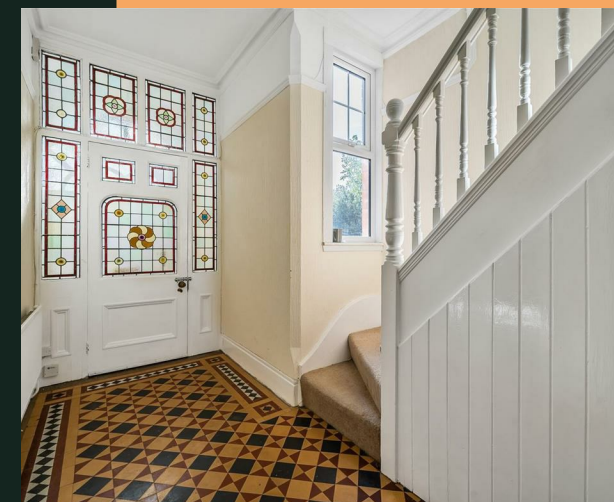


# Chester Road, B36



PROPERTY ADDRESS  
67 Chester Road  
Castle Bromwich  
Birmingham  
B36 9DP

Energy Efficiency Rating		Current	Potential
Very energy efficient - lower running costs			
(92 plus) A			
(81-91) B			77
(69-80) C			
(55-68) D		51	
(39-54) E			
(21-38) F			
(1-20) G			
Not energy efficient - higher running costs			
England & Wales		EU Directive 2002/91/EC	

---

This property showcases the iconic design elements of the Victorian era, including a symmetrical façade, ornate brickwork, and bay windows, which exude curb appeal and historical charm. With some cosmetic improvement, this property can be transformed into a stunning family home that beautifully blends period charm with modern comfort, four generously sized bedrooms, as well as a converted loft room, provide ample space for family living, guest accommodations, or a home office. Each room is flooded with natural light, creating a warm and inviting feel.

The interior boasts exquisite period details, including high ceilings adorned with intricate cornices, original fireplaces, and sash windows that not only add character but also allow for an abundance of natural light. The ground floor offers a versatile layout, featuring a spacious living room perfect for entertaining, a formal dining room for hosting dinner parties, and a cosy family room ideal for relaxation. The kitchen is a modern update with all the conveniences needed for today's lifestyle.

Castle Bromwich is situated just a few miles northeast of Birmingham. This proximity provides residents with easy access to a wide range of employment opportunities, cultural attractions, shopping centres, and entertainment options. The area is well-connected by road, with the M6 motorway nearby, providing easy access to other parts of the West Midlands and beyond. There are also good public transportation options.

