



3 Whitby Close, Snodland

Guide Price £550,000

eden  
estates



# 3 Whitby Close

Snodland, Snodland

Guide Price £550,000-£590,000. Stunning 4-bed semi-detached house in gated close. En-suite master with balcony. Expansive living room, roof terrace. Garage, on-site gym, low maintenance garden.

Council Tax band: F

Tenure: Freehold

- Gated road
- Four bedrooms
- En-suite master bedroom with balcony
- Well finished
- Located in highly desirable close
- Views over green
- Onsite gym
- Large living room with roof terrace
- Three bathrooms (Including 2 x En-suite)



eden  
estates



**Kitchen / Diner**

22' 9" x 16' 0" (6.93m x 4.88m)

**Living room with terrace**

16' 0" x 15' 6" (4.88m x 4.72m)

**Master bedroom with balcony**

16' 0" x 11' 10" (4.88m x 3.61m)

**Bedroom**

16' 0" x 9' 1" (4.88m x 2.77m)

**Bedroom**

13' 3" x 9' 3" (4.04m x 2.82m)

**Bathroom**

**En-suite**

**En-suite**

**Hallway**

**Wc**

**Bedroom**

9' 7" x 7' 2" (2.92m x 2.18m)







**GARDEN**

**ROOF TERRACE**

**BALCONY**

**GARAGE**

Single Garage

**SECURE GATED**

**DRIVEWAY**

2 Parking Spaces

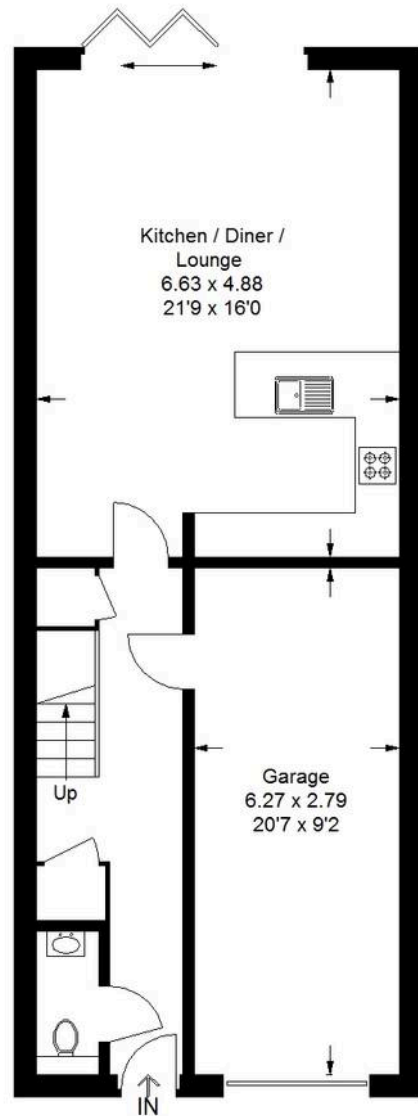




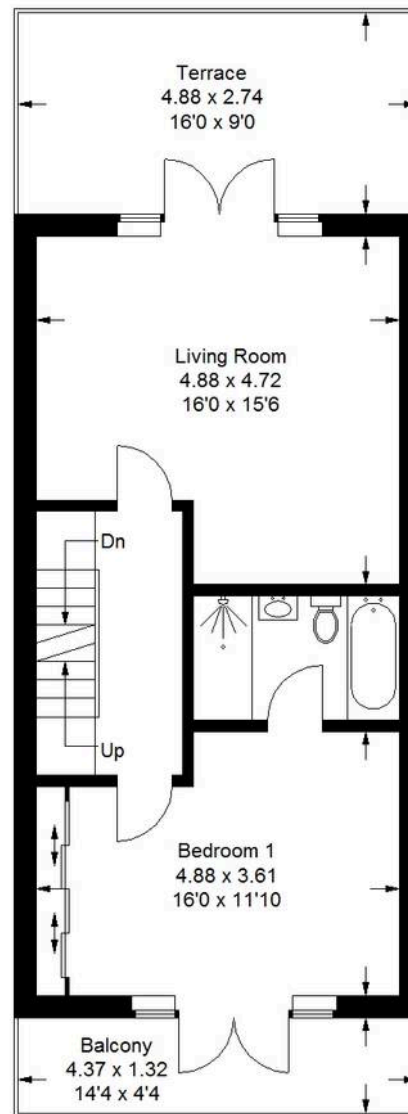


## Whitby Close, ME6

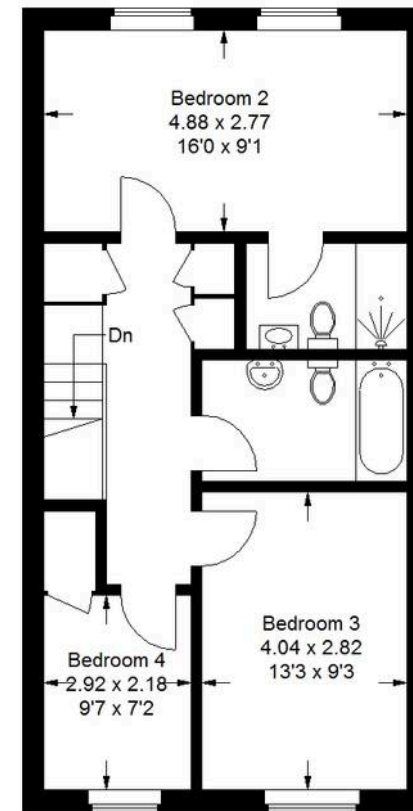
Approximate Gross Internal Area (Including Garage)  
171.9 sq m / 1850 sq ft



Ground Floor



First Floor



Second Floor





## Eden Estates

781-783 London Road, Larkfield - ME20 6DE

01732 795162

[hey@eden-estates.co.uk](mailto:hey@eden-estates.co.uk)

[www.eden-estates.co.uk](http://www.eden-estates.co.uk)



eden  
estates