



eden  
estates

18 Stirling Road, West Malling

In Excess of £950,000

eden  
estates



# 18 Stirling Road

West Malling, West Malling

Luxurious detached house in prestigious Kings Hill Phase one. 2357 sq ft, 5 beds, 4 baths. Elegant design with top-notch finishes. Exquisite kitchen/diner, spacious garden, double garage. Ideal location, vibrant community. Perfect blend of opulence and comfort.  
Council Tax band: G

Tenure: Freehold

- 2357 Sq Ft of living space
- Five bedrooms
- Four bathrooms
- Exquisite open plan kitchen/diner perfect for entertaining
- Highly desirable road in Kings Hill
- Well located for local amenities
- Phase one Kings Hill
- Large rear garden
- Double garage



eden  
estates

eden  
estates





**Kitchen / Diner**

10' 6" x 13' 2" (3.21m x 4.02m)

**Dining room**

12' 4" x 12' 7" (3.75m x 3.83m)

**Lounge**

13' 9" x 15' 5" (4.19m x 4.70m)

**Study**

12' 2" x 11' 5" (3.71m x 3.47m)

**Utility room**

6' 5" x 7' 0" (1.95m x 2.14m)

**Hallways**

**Wc**

**Bedroom**

9' 11" x 9' 9" (3.02m x 2.96m)

**Bedroom**

12' 4" x 15' 6" (3.75m x 4.72m)

**Bedroom**

14' 0" x 13' 5" (4.26m x 4.08m)

**Bedroom**

16' 5" x 17' 0" (5.01m x 5.17m)

**Bedroom**

12' 4" x 15' 6" (3.75m x 4.72m)

**Designer En-suite**

**En-suite**

**Bathroom**

**Bathroom**

**eden**  
estates







#### GARDEN

#### DOUBLE GARAGE

4 Parking Spaces

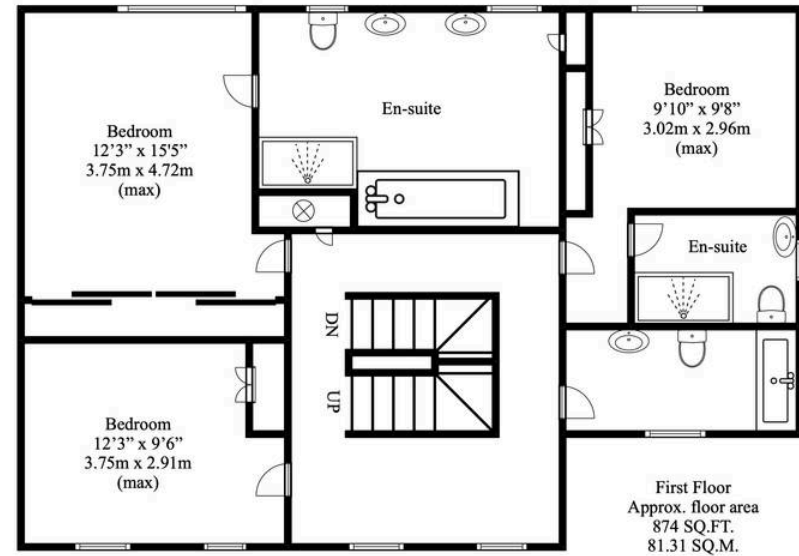
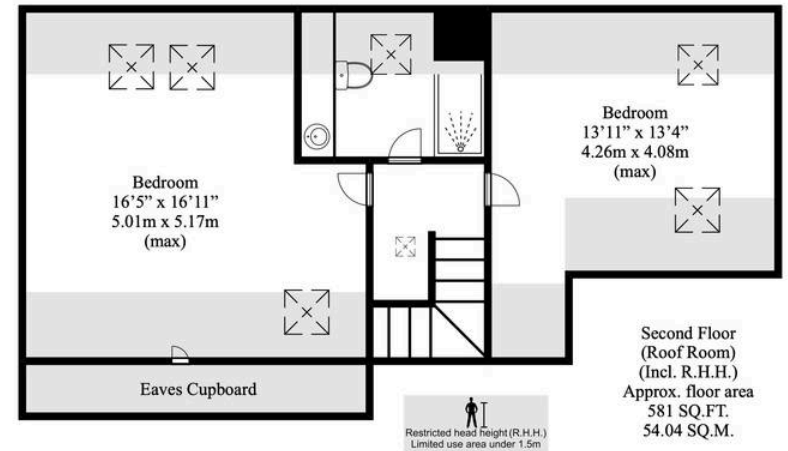
#### DRIVEWAY

4 Parking Spaces









#### Disclaimer

This floorplan is for illustrative purposes only. We do not accept responsibility for any errors or omissions. The depicted appliances have not been tested, and their operability or efficiency is not guaranteed. Measurements are approximate and not to scale and not precise, and may have been taken from the widest area including wardrobes and storage spaces. Garages and outbuildings may not be represented in their actual location in relation to the property. Buyers are advised to take their own measurements and compass reading. Internal measurements and total areas should be verified, as their accuracy is not guaranteed.





## Eden Estates

781-783 London Road, Larkfield - ME20 6DE

01732 795162

[hey@eden-estates.co.uk](mailto:hey@eden-estates.co.uk)

[www.eden-estates.co.uk](http://www.eden-estates.co.uk)



eden  
estates