

Henry & James

Est. 1950



BRACKNELL GARDENS, HAMPSTEAD NW3



£795 pw stc

Furnished

AN IMPRESSIVE NEWLY REFURBISHED AND INTERIOR DESIGNED TWO DOUBLE BEDROOM APARTMENT WITH PRIVATE PATIO AND COMMUNAL GARDEN.

Accommodation

2 Bedrooms
2 Bathrooms
EPC Rating: D

1 Reception
Open Plan Kitchen
940 sq. ft

Features

Newly Refurbished Two Double Bedroom Apartment
Interior Designed
Access to Communal Gardens
Private Patio
Building Housekeeper

Professionally Managed

This ground floor apartment has just undergone a complete refurbishment and remodelling throughout. Accommodation includes entrance hall, open-plan reception room with dining area, well thought-out kitchen with plenty of storage, master bedroom suite with built-in storage and en-suite shower room, second double bedroom and separate family bathroom. The property further benefits from access to a wider communal

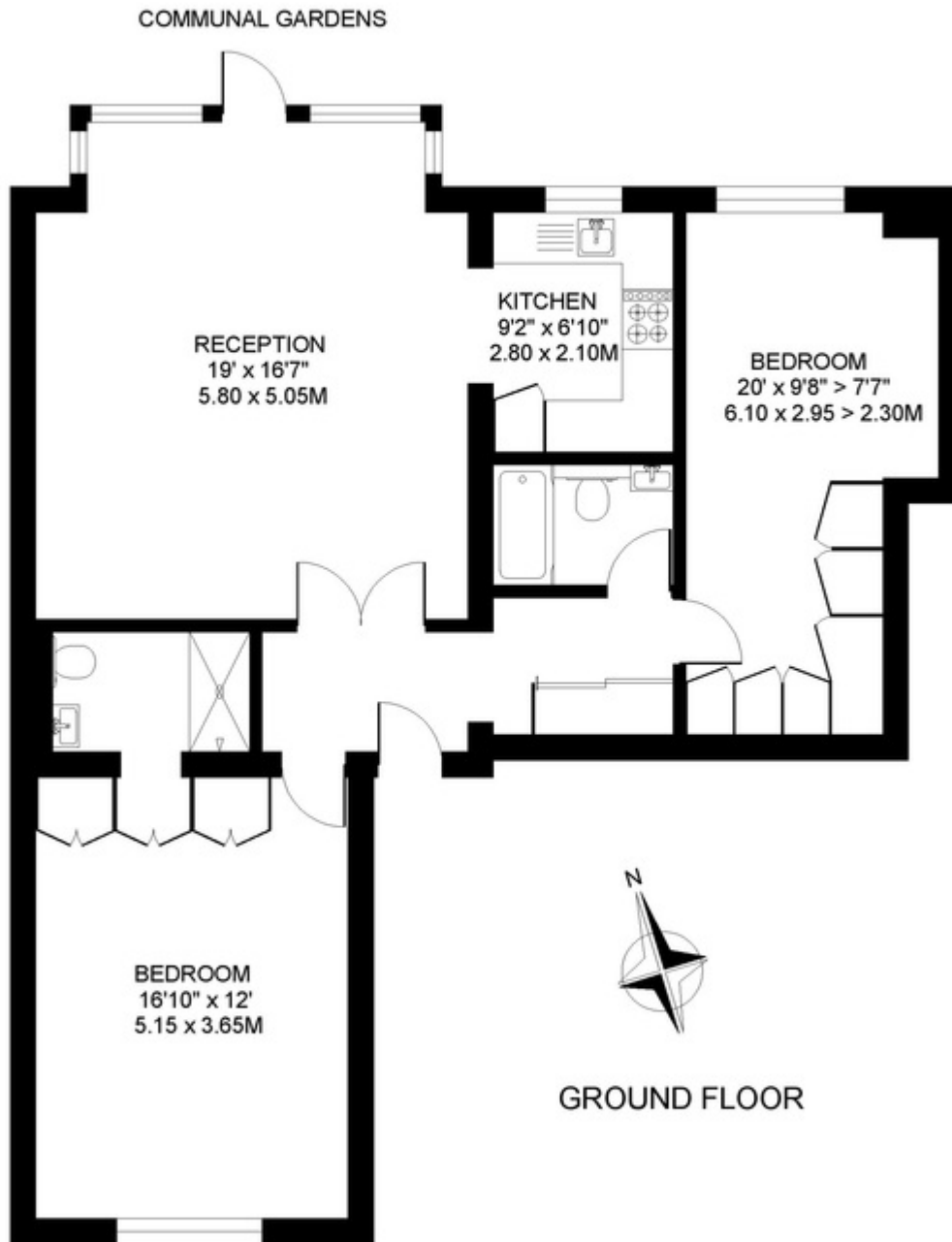
garden and building housekeeper. It is available immediately on a furnished basis for a long-term tenant. A member of Henry & James staff has a legal interest in this property.



BRACKNELL GARDENS, CAMDEN, LONDON NW3

APPROXIMATE INTERNAL (LIVING) FLOOR AREA

TOTAL AREAS SHOWN ON PLAN
940 SQ.FT. / 87.3 SQ.M.



COPYRIGHT: Floorplan produced for "Henry & James Estate Agents Ltd." by floorplanners.co.uk

This plan is not to a given scale, and is for guidance only, and must not be relied upon as a statement of fact.

All measurements are maximum, and include window bays, and wardrobes where applicable.

This plan has been prepared in accordance with the "RICS" Code of Measuring Practice.

Where a room has a sloping ceiling, the dotted line indicates height at 1.5m, and measurements are shown at floor level.

Henry & James

Est. 1950

