



**GASCOIGNE  
HALMAN**

BRIDGE LANE, FRODSHAM

---

THE AREAS LEADING ESTATE AGENT





## BRIDGE LANE, FRODSHAM

### Offers in Region of £300,000

**A character late Victorian period property offering beautifully presented accommodation blending period features with high quality modern refinements together with a walled courtyard and lovely garden to the rear.**

The period nature of the house is instantly recognisable from the front. It is set elevated from the road and displays attractive brickwork detailing.

Once inside, it is clear that the house has been sensitively refurbished and it is presented in a way that is both exquisite and homely.





The ground floor has a bright open plan feel with the main living area offering living and dining spaces. A period fireplace adorns the front room and original storage cupboards are retained in the rear which also has double doors opening to the courtyard.

The kitchen is fitted with sleek gloss finish cabinets and built in appliances.



The first floor presents two spacious double bedrooms and an impressive bathroom complete with a deep bath, separate shower and twin wash basins. A study space is available on the landing and there is hatch access with a ladder to a boarded loft storage area.

Double glazed windows are fitted throughout and gas fired central heating is installed with a new boiler fitted in August 2025.

There is a walled courtyard to the immediate rear with a range of outbuildings incorporating a utility area and useful storage. A gate opens to a rear access path with a an area of garden beyond with a mature wooded backdrop.



## LOCATION

The house is just a mile from the centre of Frodsham, convenient for access to a range of shops, cafes and bars plus excellent local facilities. There is nearby access to greenbelt and farmland with walks along side the nearby River Weaver. The road, rail and motorway networks allow access to many parts of the North West. Regular direct rail services run from Frodsham to Chester, Warrington, Liverpool and Manchester.

## TENURE

The property is Leasehold for the remainder of an initial 999 year lease from 1875. Ground rent is payable of £XX per year.

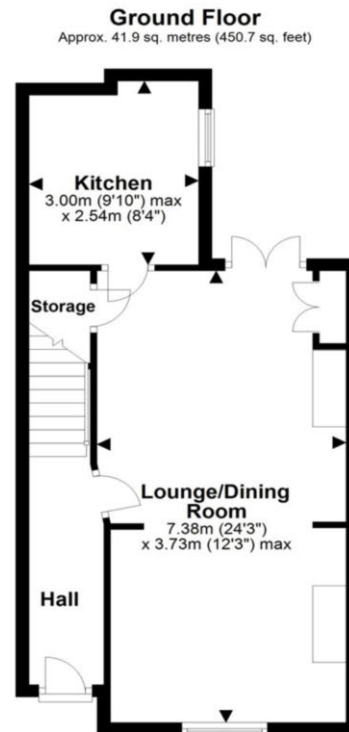
## COUNCIL TAX

Band C. Cheshire West & Chester.

## EPC RATING

Awaited.





Total area: approx. 84.5 sq. metres (909.5 sq. feet)

NOTICE Gascoigne Halman for themselves and for the vendors or lessors of this property whose agents they are give notice that: (i) the particulars are set out as a general outline only for the guidance of intending purchasers or lessees, and do not constitute, nor constitute part of, an offer or contract; (ii) all descriptions, dimensions, references to condition and necessary permissions for use and occupation, and other details are given in good faith and are believed to be correct but any intending purchasers or tenants should not rely on them as statements or representations of fact but must satisfy themselves by inspection or otherwise as to the correctness of each of them; (iii) no person in the employment of Gascoigne Halman has any authority to make or give any representation or warranty whatever in relation to this property.

## FRODSHAM OFFICE

01928 739777

frodsham@gascoignehalman.co.uk

Pollard Buildings, Church Street, Frodsham, WA6 7DW

**GASCOIGNE  
HALMAN**