



**GASCOIGNE  
HALMAN**

26 THE WINDINGS, CABLE DRIVE, HELSBY,  
FRODSHAM

---

THE AREAS LEADING ESTATE AGENT



## 26 THE WINDINGS, CABLE DRIVE, HELSEBY, FRODSHAM

**£165,000**

**A luxury first floor apartment with spacious, high quality accommodation and a range of support facilities, available to those aged 55 and over.**

A spacious retirement apartment set on the first floor of this exclusive, stylish modern development for those aged 55 and over.

The apartment enjoys an excellent position within the building and has a sunny West facing aspect and views from the private balcony.

The accommodation has been designed and planned to provide a comfortable, safe and supported living environment.





There is a useful storage/utility area off the entrance hall.

A secure entrance with intercom system allows access to a spacious foyer with reception desk. There a lift to each floor.

The Windings is a modern, well designed and purpose built retirement village and the development benefits from a combined heat system and the cost of the utilities is included within the service charge. There are a range of high-quality facilities for residents and their visitors to enjoy including an on site bistro (currently closed), a hairdressers and beauty salon, a communal lounge, landscaped communal gardens and activity rooms. Car parking is available to the rear of the building.

#### **LOCATION**

The Windings stands in communal gardens and grounds with a paved seating area and flower beds. There is parking available for residents and visitors. Helsby offers a range of local services with a Tesco supermarket nearby. The market town of Frodsham is only a few miles away with a wide variety of shops and facilities. Road, rail and motorway networks provide links to many parts of the North West and beyond.

#### **LEASE AND SERVICE CHARGE**

The property is leasehold for the residue of an initial 125 year term from April 2015. Ground rent is included in the service charge. The service charge is approximately £157 per week (23/24). This covers maintenance of the building, grounds and communal areas, utility costs and building insurance. Buyers must meet eligibility criteria and complete an assessment with the management company, Your Housing Group.

#### **COUNCIL TAX**

Band B. Cheshire West & Chester.

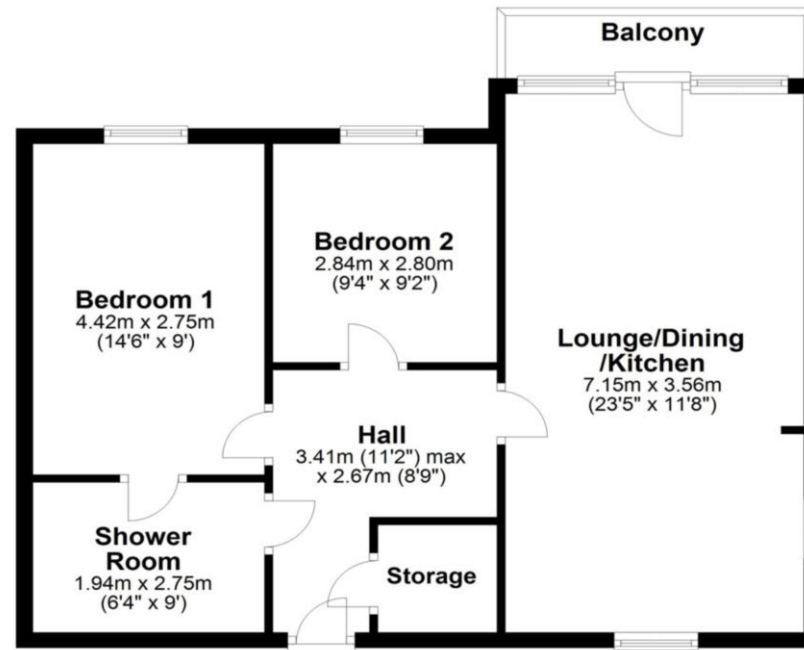
#### **EPC RATING**

Current B.

---

### First Floor Apartment

Approx. 61.8 sq. metres (665.4 sq. feet)



Total area: approx. 61.8 sq. metres (665.4 sq. feet)

NOTICE Gascoigne Halman for themselves and for the vendors or lessors of this property whose agents they are give notice that: (i) the particulars are set out as a general outline only for the guidance of intending purchasers or lessees, and do not constitute, nor constitute part of, an offer or contract; (ii) all descriptions, dimensions, references to condition and necessary permissions for use and occupation, and other details are given in good faith and are believed to be correct but any intending purchasers or tenants should not rely on them as statements or representations of fact but must satisfy themselves by inspection or otherwise as to the correctness of each of them; (iii) no person in the employment of Gascoigne Halman has any authority to make or give any representation or warranty whatever in relation to this property.

---

#### FRODSHAM OFFICE

01928 739777

frodsham@gascoignehalman.co.uk

Pollard Building, Church Street, Frodsham, WA6 7DW

**GASCOIGNE  
HALMAN**