



Ottley Drive | Kidbrooke Village | SE3 9FP

£1,250 pcm

Stunning 1 bed brand new third floor apartment on the Kidbrooke Village development by Berkeley Homes. Landlord has just completed so never been lived in. All the features you would expect from a luxury new build. Gym and concierge service. Balcony with views over Sutcliffe Park. Unfurnished, available now.

Grayston House

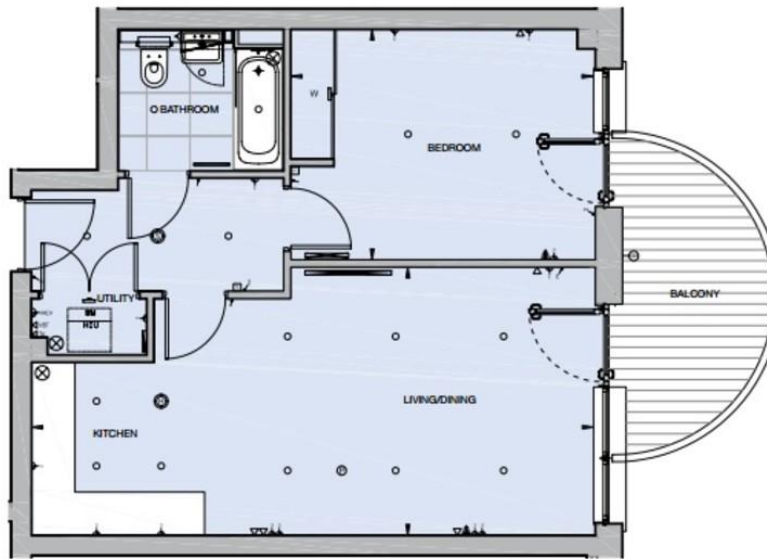
One Bed Apartment

Type 26

Plot G2.1.6, G2.2.6, G2.3.6, G2.4.6, G2.5.6, G2.6.6



Total Area:	52 SQ M	560 SQ FT
Living/Dining/Kitchen	7,830mm x 3,740mm	25' 8" x 12' 3"
Bedroom	4,230mm x 3,195mm	13' 10" x 10' 5"



Contact Details

36 Montpelier Vale
London
SE3 0TA

www.jdmestateagents.com

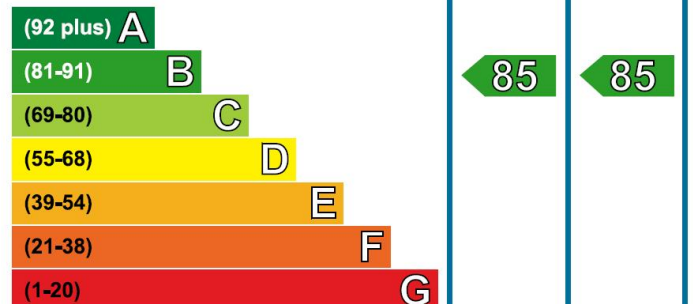
bh@jdmestateagents.com

020 8463 0091

Please refer to our website to see our full Area Guides.

Energy Efficiency Rating

Very energy efficient - lower running costs



IMPORTANT NOTICE: Every effort has been made to ensure the accuracy of these details however they form no part of any contract and are issued without responsibility on the part of the agents or landlord. Any intending tenant should satisfy themselves by inspection as to the correctness of each statement. Photographs may show only certain parts and aspects of the property at the time when the photographs were taken. We recommend that all information provided is verified by yourself on inspection.

