



Ottley Drive, Kidbrooke Village, SE3 9FP

£1,250 pcm

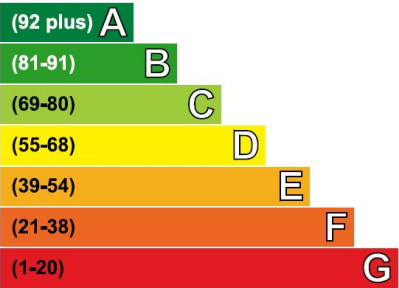


Stunning 1 bed brand new third floor apartment on the Kidbrooke Village development by Berkeley Homes. Landlord has just completed so never been lived in. All the features you would expect from a luxury new build. Gym and concierge service. Balcony with views over Sutcliffe Park. Unfurnished, available now.



Energy Efficiency Rating

Very energy efficient - lower running costs



Not energy efficient - higher running costs

| Current | Potential |
|---------|-----------|
| 85 | 85 |

Please refer to

www.jdmestateagents.com

to view our full area guides



Grayston House

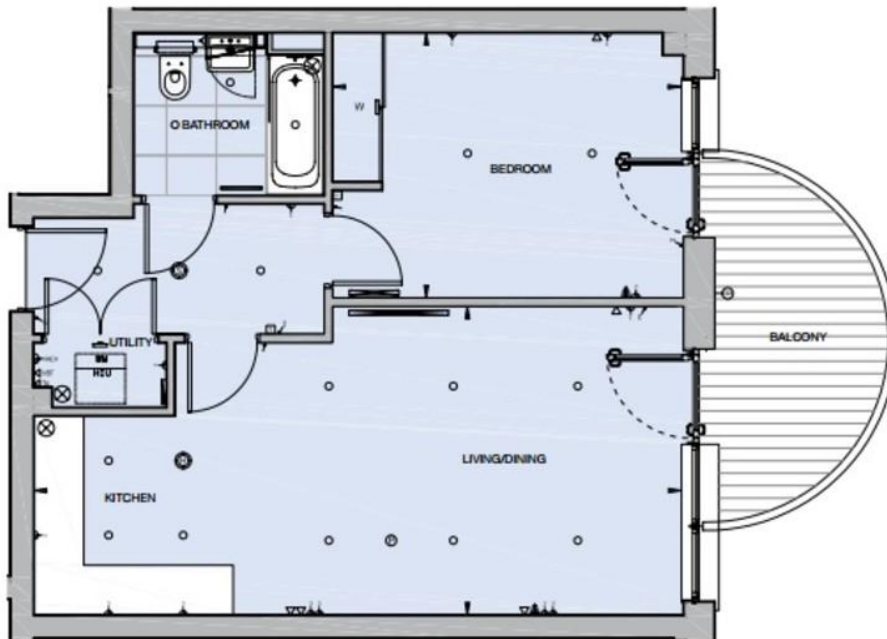
One Bed Apartment

Type 26

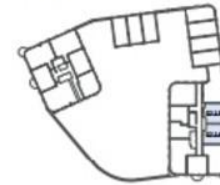
Plot G2.1.6, G2.2.6, G2.3.6, G2.4.6, G2.5.6, G2.6.6



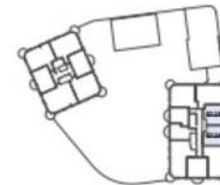
| Total Area: | 52 SQ M | 560 SQ FT |
|-----------------------|-------------------|------------------|
| Living/Dining/Kitchen | 7,830mm x 3,740mm | 25' 8" x 12' 3" |
| Bedroom | 4,230mm x 3,195mm | 13' 10" x 10' 5" |



First Floor



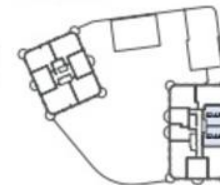
Second Floor



Third Floor



Fourth Floor



Fifth Floor

