



Kendall Road, London SE18 4PW

£1300 PCM



Available immediately to let is this two bed, two bath, top floor purpose built apartment.

Well presented and neutrally decorated, the property is unfurnished and comes with secure gated parking.

Located in a popular and peaceful development built, you could not be better located with various transport networks connecting you to historic Greenwich and the O2 with it's London Underground link, the up and coming Woolwich soon to host Cross rail, taking you to Bond Street in 22 minutes and Canary Wharf in 8!



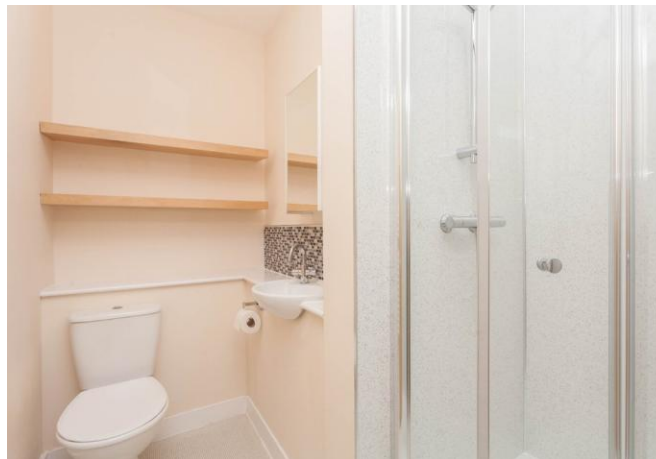
Energy Efficiency Rating		Current	Potential
Very energy efficient - lower running costs			
(92-100)	A		
(81-91)	B		
(69-80)	C	71	77
(55-68)	D		
(39-54)	E		
(21-38)	F		
(1-20)	G		
Not energy efficient - higher running costs			
England, Scotland & Wales		EU Directive 2002/91/EC	



Please refer to

www.jdmestateagents.com

to view our full area guides



Brook Square, SE18

Approximate Gross Internal Area = 59.5 sq m / 640 sq ft

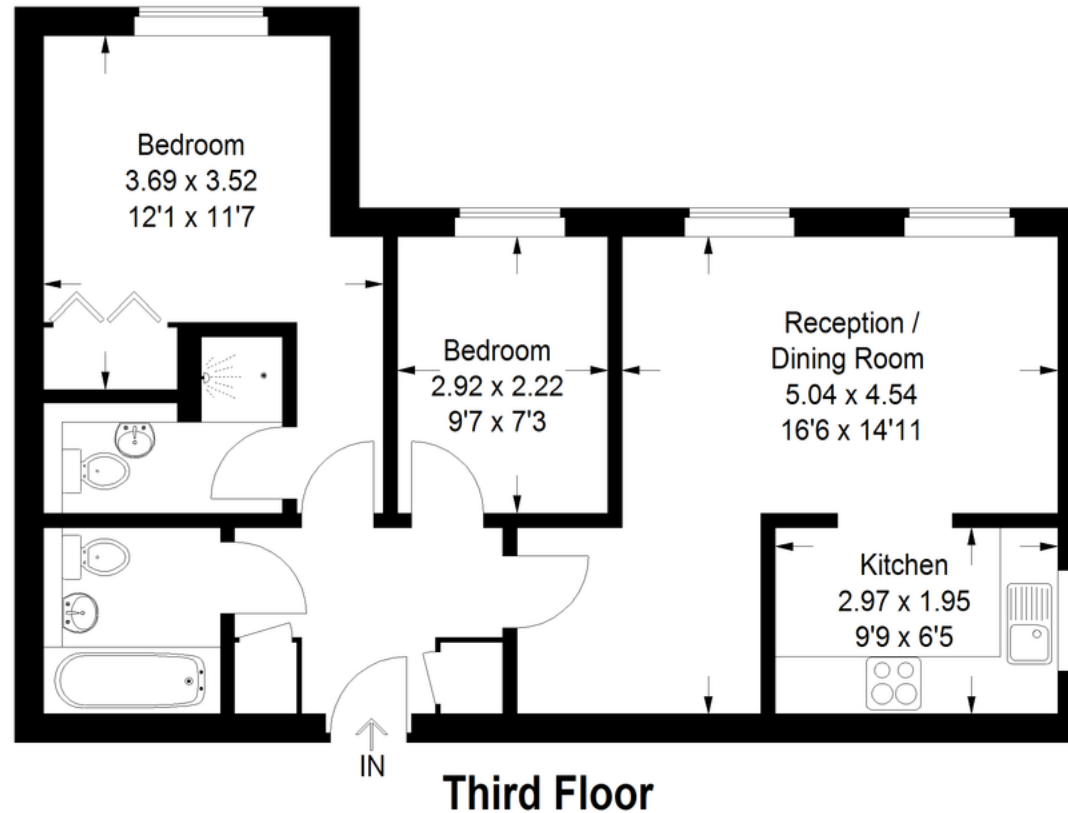


Illustration for identification purposes only, measurements are approximate, not to scale.
FloorplansUsketch.com © 2018 (ID 410748)

