



MILLARD
COOK

Slide House
Hynetown Road
Strete



Slide House, perched above Slide Cliff, offers uninterrupted sea views across Start Bay, providing exceptional views which rivals most properties in the area.

Offering some of the finest build quality and architectural design in the area, this home is a true showcase of contemporary coastal living, with meticulous attention to detail throughout.

Every aspect of the home has been carefully considered to harmonise luxurious finishes with functionality and style.

With private access off Hynetown road this is arguably one of the most desirable roads in the area.



Interior

Slide House has been renovated to exacting standards, featuring underfloor heating, double glazing, high-quality tiled flooring and premium fittings. The bespoke kitchen, en-suite, and shower rooms all reflect an uncompromising commitment to quality.

The main living spaces are open-plan kitchen/dining/living area filled with natural light, thanks to three sets of bi-folding doors and a thoughtfully designed architectural layout. This central space seamlessly connects with the outdoors and takes full advantage of the sea views.



The high-specification kitchen is a true centrepiece, featuring an extensive range of cupboards and drawers, high quality branded double oven, warming drawer, and microwave oven (with Bluetooth connectivity), along with Neff induction hob and extractor. Separate integrated fridge and freezer. Corner pantry cupboard and a large central island with high quality stone worktop, the island incorporates the Neff five-ring induction hob, wine fridge, inset gold sink with matching gold boiling water tap.





A spacious utility room sits adjacent offering additional fitted units, stone work surfaces, gold sink and taps. Full size washing machine and tumble dryer space discreetly hidden in cupboards with well appointed tall cupboards for all the essential cleaning tools and ironing board.

A large cloakroom is also accessed here along with a door to the outside.

The open-plan living room has bi-folding doors that open out to the garden and the stunning coastal views, creating an effortless indoor-outdoor flow.

A separate TV room or fourth bedroom enjoys a front-facing window and offers excellent versatility for guests or family living.



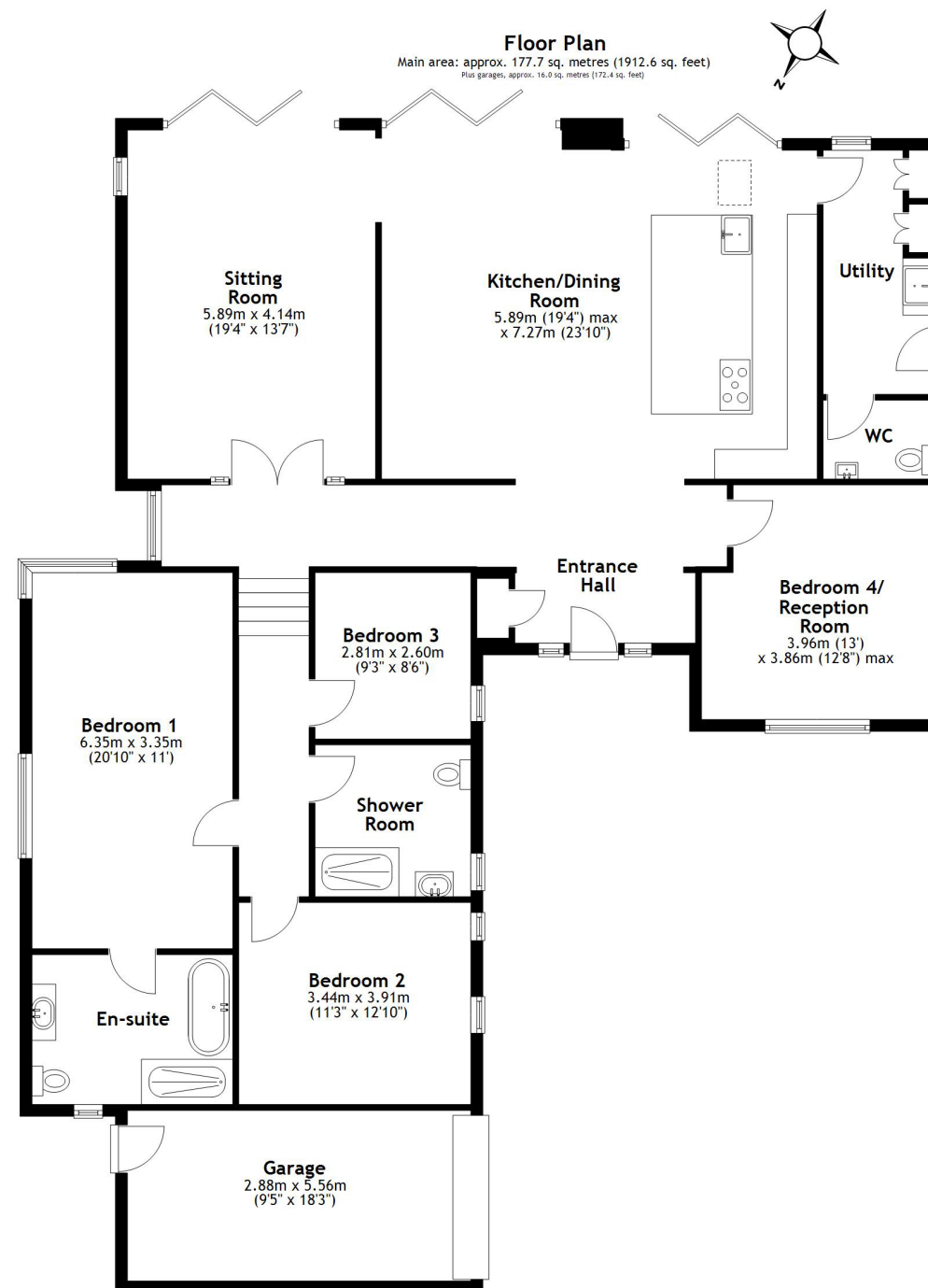
Bedrooms & Bathrooms

Slide House benefits from four bedrooms including a wonderful principal suite with garden and sea views.

The en-suite is a luxurious retreat, fully tiled and featuring a large walk-in shower, freestanding bath, WC, and a stylish vanity unit with an inset heated mirror, underfloor heating and matching gold radiator

The family shower room is equally well-appointed with a large walk-in shower, WC, and hand basin.





Main area: Approx. 177.7 sq. metres (1912.6 sq. feet)
Plus garages, approx. 16.0 sq. metres (172.4 sq. feet)
Slide House, Dartmouth

Exterior

Approached by a newly laid long tarmac driveway from Hynetown Road, the property provides ample parking and access to an integral garage. Tiled steps lead to the main entrance.

The rear garden is a particular highlight, professionally landscaped to capture the panoramic sea views. Adjacent to the property is a beautifully tiled terrace, ideal for al fresco dining and entertaining which extends to a larger seating area further into the garden, which benefits both morning and evening sunlight. Steps lead down to a level lawn surrounded by evergreen hedging and mature shrubs. Discreetly located to each side of the house are additional storage areas.



Services

3 year old Grant oil boiler located at the rear of the garage this is combi boiler and there is a new metal double skin oil tank discreetly located at the side of the property.

Underfloor heating in the downstairs living areas, with bedroom and tv room benefiting from carpet and radiators. The ensuite and main shower room benefit from electric underfloor heating.

Mains water and private drainage. Oil fired central heating.

Tax Band :G

EPC: C

Property size, approx. 1,912

Address. Slide House, Hynetown Road, Strete, Tq6 0RS

Viewings

Advanced notice required to view the property, strictly via Millard Cook in Dartmouth.

This house needs to be viewed to be fully appreciated.

Floor plans, and images are for guidance only.



Score	Energy rating	Current	Potential
92+	A		
81-91	B		81 B
69-80	C	74 C	
55-68	D		
39-54	E		
21-38	F		
1-20	G		



Millard Cook is a bespoke, independent agency covering Dartmouth and the South Hams.

To register for private and confidential homes available, please contact the office on 01803 832361 or visit www.millardcook.com

IMPORTANT NOTICE 1. These particulars are for guidance only. They are prepared and issued in good faith and fair description of the property. They do not constitute part of an offer or contract. 2. Any description or information given should not be relied on as a statement or representation of fact that the property or its services are in good condition. Millard Cook has no authority to make or give any representation or warranty whatsoever in relation to the property. 3. The photographs show only certain parts and aspects of the property at the time they were taken. CGI on images may be used. Any areas, measurements or distances given are approximate only. 4. Descriptions of a property are inevitably subjective, and the descriptions contained are used in good faith as an opinion and not by way of statement of fact and queries need clarifying before viewing, please do not hesitate to contact Millard Cook. MONEY LAUNDERING REGULATIONS - To a sale being agreed, prospective purchasers will be required to produce identification documents to comply with Money Laundering regulations.