



25 May Street

Barrowford, Nelson

Council Tax band: A

Tenure: Leasehold

EPC Energy Efficiency Rating: E

EPC Environmental Impact Rating: E

- Modern kitchen with island and integrated appliances
- Open plan kitchen living area
- Wood burning stove
- Spacious private garden with patio
- Contemporary bathroom with walk-in shower
- Heated towel rail
- Off-road parking
- Converted loft space with built-in storage
- Charming stone facade



Kitchen

This stunning kitchen combines contemporary design with practical functionality, featuring sleek cabinetry and ample worktop space. The layout includes a central island that serves as a stylish focal point, complemented by modern pendant lighting. High-quality finishes, including a tiled splashback and integrated extractor, add a touch of sophistication. Large UPVC windows allow natural light to flood the space, while the open-plan design creates a seamless flow into the dining area, making it perfect for both everyday living and entertaining. The room is completed with radiator and elegant wood-effect flooring, enhancing the warm and inviting atmosphere.

Living Room

This beautifully presented living room offers a bright and inviting space, enhanced by a large UPVC front-facing window that floods the room with natural light. The neutral décor is complemented by a feature wall with contemporary wood panelling, creating a stylish focal point. Built-in shelving, cabinetry and a radiator provide both functionality and charm, while the elegant coving adds a touch of sophistication. The room is finished with a soft, neutral carpet, making it a warm and welcoming area ideal for relaxation or entertaining.

Bedroom 1

This generously sized bedroom offers a bright and airy feel, enhanced by a large UPVC window that allows plenty of natural light to flow through. The room is tastefully decorated with a feature wall showcasing an elegant floral design and panelling, adding a touch of character and charm. Neutral tones create a calm and relaxing atmosphere, while the space easily accommodates a variety of layouts. Finished with quality flooring, radiator and a central ceiling light, this room provides a perfect retreat for rest and relaxation.

Bedroom 2

This well-proportioned bedroom is beautifully presented with a modern design and a feature wall adorned with a stylish botanical print. A large UPVC window allows natural light to brighten the space, while recessed ceiling spotlights provide a sleek, contemporary finish. The neutral colour palette creates a calm and inviting atmosphere, while the quality flooring and radiator complete the room's elegant and functional design.



Kitchen

This stunning kitchen combines contemporary design with practical functionality, featuring sleek cabinetry and ample worktop space. The layout includes a central island that serves as a stylish focal point, complemented by modern pendant lighting. High-quality finishes, including a tiled splashback and integrated extractor, add a touch of sophistication. Large UPVC windows allow natural light to flood the space, while the open-plan design creates a seamless flow into the dining area, making it perfect for both everyday living and entertaining. The room is completed with radiator and elegant wood-effect flooring, enhancing the warm and inviting atmosphere.

Living Room

This beautifully presented living room offers a bright and inviting space, enhanced by a large UPVC front-facing window that floods the room with natural light. The neutral décor is complemented by a feature wall with contemporary wood panelling, creating a stylish focal point. Built-in shelving, cabinetry and a radiator provide both functionality and charm, while the elegant coving adds a touch of sophistication. The room is finished with a soft, neutral carpet, making it a warm and welcoming area ideal for relaxation or entertaining.

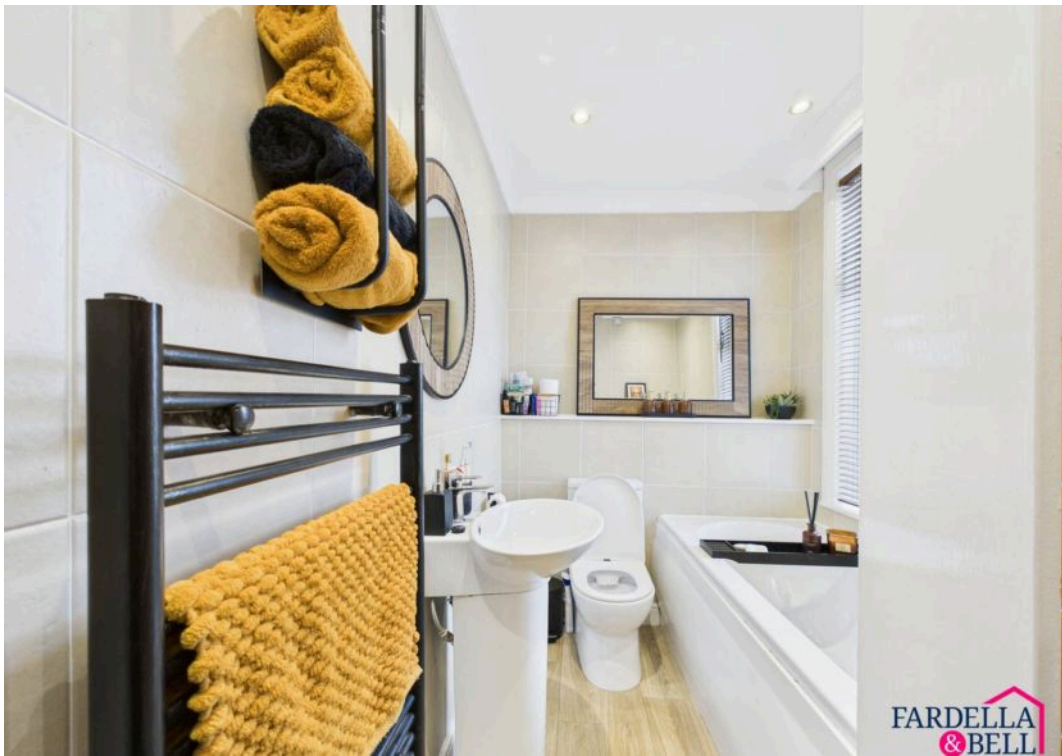
Bedroom 1

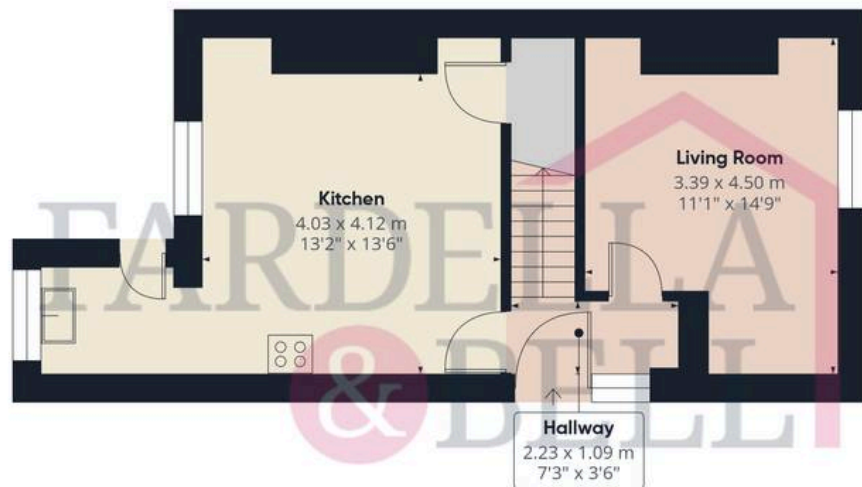
This generously sized bedroom offers a bright and airy feel, enhanced by a large UPVC window that allows plenty of natural light to flow through. The room is tastefully decorated with a feature wall showcasing an elegant floral design and panelling, adding a touch of character and charm. Neutral tones create a calm and relaxing atmosphere, while the space easily accommodates a variety of layouts. Finished with quality flooring, radiator and a central ceiling light, this room provides a perfect retreat for rest and relaxation.

Bedroom 2

This well-proportioned bedroom is beautifully presented with a modern design and a feature wall adorned with a stylish botanical print. A large UPVC window allows natural light to brighten the space, while recessed ceiling spotlights provide a sleek, contemporary finish. The neutral colour palette creates a calm and inviting atmosphere, while the modern furniture and decor add a touch of sophistication. The room is finished with quality flooring, radiator and a central ceiling light, making it a perfect retreat for rest and relaxation.







Floor 0



Floor 1



Floor 2

Approximate total area⁽¹⁾

94.7 m²

1019 ft²

Reduced headroom

9.9 m²

106 ft²

(1) Excluding balconies and terraces

Reduced headroom

Below 1.5 m/5 ft

Calculations reference the RICS IPMS 3C standard. Measurements are approximate and not to scale. This floor plan is intended for illustration only.

GIRAFFE360



Fardella & Bell Estate Agents

143 Burnley Road,, Padiham – BB12 8BA

01282 968 668 • info@fbestateagents.co.uk • fbestateagents.co.uk/

