





10 Delph Mount

Nelson, Nelson

Council Tax band: A

Tenure: Freehold

- Two bedrooms
- Front and rear garden
- Detached garage
- Garden room to the rear
- Desirable area
- Close to local to schools



Entrance Hallway

Kitchen

Living Room

Garden Room

Landing

Bedroom 1

Bedroom 2

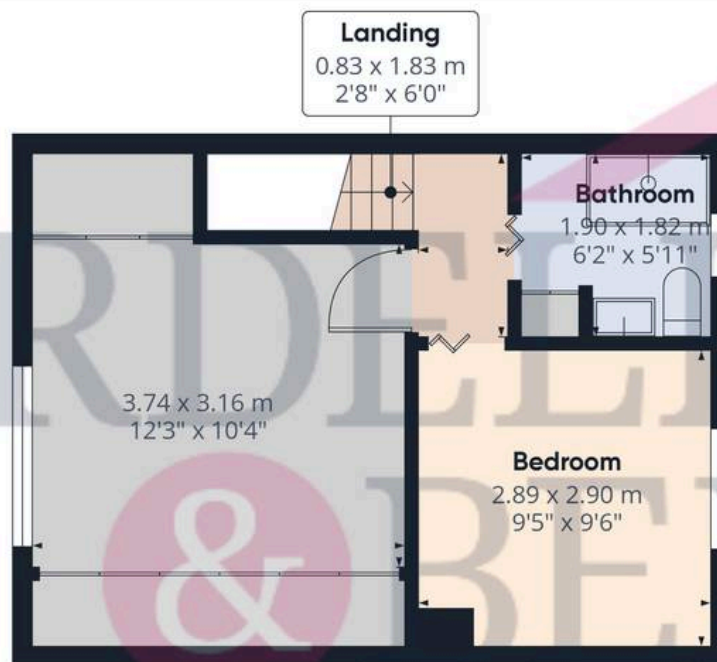
Family bathroom







Floor 0



Floor 1

Approximate total area⁽¹⁾

71.02 m²

764.45 ft²

(1) Excluding balconies and terraces

While every attempt has been made to ensure accuracy, all measurements are approximate, not to scale. This floor plan is for illustrative purposes only.

Calculations are based on RICS IPMS 3C standard.

GIRAFFE360



GARDEN

ON STREET

GARAGE

Single Garage





Fardella & Bell Estate Agents

143 Burnley Road,, Padiham – BB12 8BA

01282 968 668 • info@fbestateagents.co.uk • fbestateagents.co.uk/



PRS Property
Redress
Scheme



naea | propertymark
PROTECTED

