



THE HARROGATE

LUXURY LODGE

The grandest of escapes

One of life's greatest luxuries is savouring a rare moment of total contentment. With The Harrogate, you'll find that kind of peace and tranquillity in abundance. From master suite to living room, this lodge is the greatest of escapes. Its lofty proportions, luxurious finishes, as well as wonderfully thoughtful and exquisite details make it an exceptional place to escape to.





Luxury relaxation

From the moment you arrive, the luxury of this lodge will enrich every moment of relaxation.

Stretch out on the sofa and lose track of time as you let the view out of those grand windows envelop and captivate you.

Liberate a perfectly cool, crisp white from the wine cooler and contemplate the day over dinner at the table, or out on the deck.

Enjoy the richest of relaxation in this very special sanctuary.



Let the light and air stream in through those generous patio doors and grand windows, reviving both those reclining on the sofa and the sleepyheads still in bed, as the fresh air flows effortlessly through this expansive lodge, from living room to bedroom.



Start the day in style with brunch at the breakfast bar. Savour indulgent dinners with course after delicious course dished up at the dining table. Make every mealtime a pleasure in a space that works wonderfully, no matter what the occasion.







As day turns to night, slink away to the sumptuous serenity of the master suite, where a superbly appointed en suite and sleep-inducing signature pocket sprung mattress awaits – satisfyingly peaceful dreams won't be far behind.

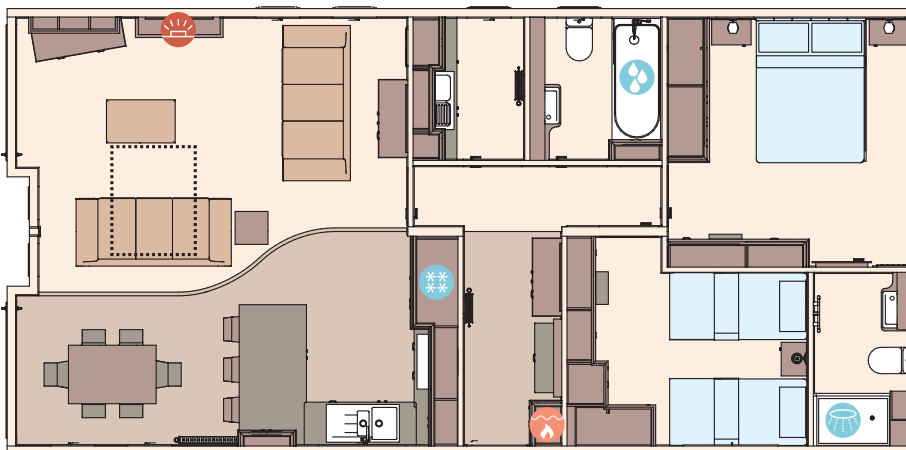




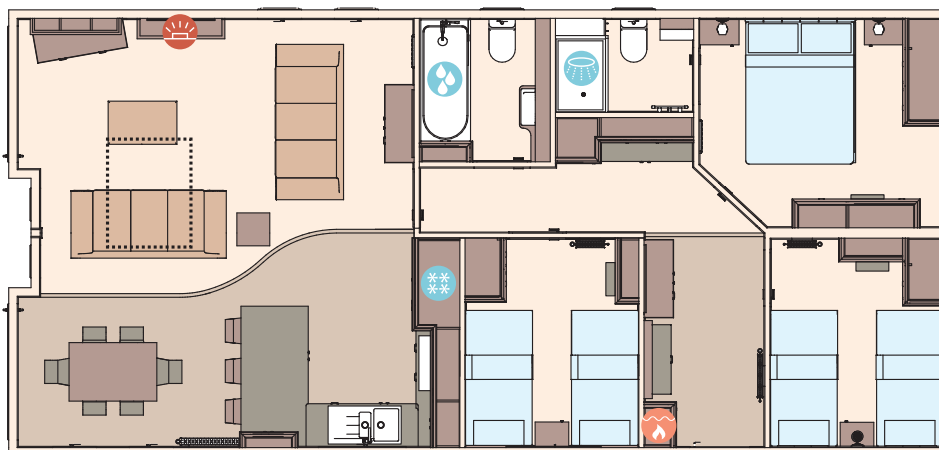
ALL THIS INCLUDED

- ✓ Fully galvanised heavy duty chassis
- ✓ CanExel™ exterior Timberwolf cladding in Ced-R-Vue styling
- ✓ Graphite grey UPVC windows including feature cathedral front windows & 2 patio doors
- ✓ Domestic grade guttering system & fascia boards
- ✓ Rooflight window in kitchen
- ✓ Residential specification BS3632
- ✓ Exterior lights including canopy lighting
- ✓ High quality internal door frames and doors
- ✓ Feature ceiling board
- ✓ Entrance hall and cloakroom
- ✓ Utility room including sink, integrated washing machine and high capacity extractor fan (2 bedroom model)
- ✓ Utility area including integrated washing machine and high capacity extractor fan (3 bedroom model)
- ✓ Integrated oven and separate 5 burner hob
- ✓ Externally vented cooker hood
- ✓ Integrated fridge freezer
- ✓ Integrated microwave
- ✓ Porcelain kitchen sink
- ✓ Integrated dishwasher
- ✓ Wooden fitted cutlery tray
- ✓ 40mm worktops
- ✓ Breakfast bar with 3 stools
- ✓ Deluxe Bluetooth sound system
- ✓ TV point in master bedroom and twin room
- ✓ Brushed chrome switches throughout
- ✓ Divan beds throughout and lift-up storage king size main bed
- ✓ Bedside wall lights
- ✓ 1700mm bath with shower enclosure
- ✓ En suite shower in master bedroom
- ✓ Feature electric fire
- ✓ Contemporary radiators in lounge and master bedroom
- ✓ Condensing boiler and gas central heating
- ✓ Luxury soft-close toilets
- ✓ 2 free-standing sofas with scatter cushions
- ✓ Fold-out bed in lounge
- ✓ Lounge pouffe including storage
- ✓ Floor standing lamp in lounge
- ✓ Plain duvet covers, pillowcases, bedthrows and scatter cushions
- ✓ 'Exclusive' pocket sprung mattresses
- ✓ Satellite co-ax
- ✓ USB sockets for convenience
- ✓ Shaver socket in main bathroom and en suite
- ✓ Soft-close hinges throughout
- ✓ Increased storage in utility room (2 bedroom model)
- ✓ Free-standing dining table & 6 chairs to all models
- ✓ Deluxe NEFF appliances including microwave, oven and hob
- ✓ Feature wood panelling walls in master bedroom and 1 x twinroom

THE HARROGATE - 41FT X 20FT X 2 BEDROOM



THE HARROGATE - 42FT X 20FT X 3 BEDROOM



KEY:  Fire  Boiler  Shower  Bath  Fridge/Freezer  Front pull out bed



For further information and to take an interactive virtual tour of The Harrogate, visit www.abiuk.co.uk

