



SIMPLE LIFE



SIMPLE LIFE



Canalside, Wigan, WN6

£1,250 PCM

The site benefits from close proximity (1.4 miles) to Wigan town centre and a good strategic location – less than 20 miles from both Manchester and Liverpool city centres with excellent connectivity via road and rail, being 3 miles from the M6/M58 interchange.

The welcoming central hallway of the Grantham sits in between the living room and the kitchen. A house designed with you in mind, the spacious lounge provides the perfect area to relax, whilst the dining/kitchen area provides a great place to spend time and entertain with its French windows opening on to the garden. A WC is conveniently situated off the hallway, completing the downstairs.

Upstairs, the house has a large master bedroom with fitted, mirrored wardrobes, and a further two bedrooms. A stylish family bathroom with a separate bath and shower provides the best of both worlds, whilst a store room on the landing provides a space to store bits and pieces.

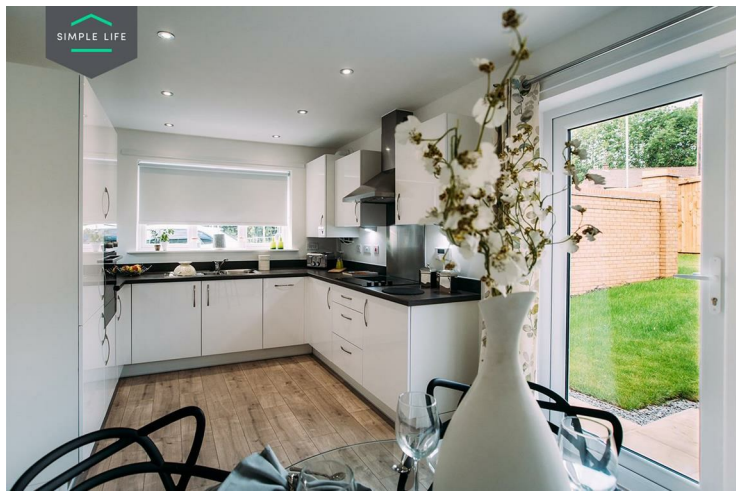
Ideal for families, there are 45 primary and secondary schools rated 'Good' or 'Outstanding' by Ofsted within 3 miles of the site.

Robin Retail & Leisure Park is one of the Borough's principle sport, leisure and retail complexes, featuring a multiplex cinema, major retail brands including Next and Matalan, as well as a football centre and gym. In addition, Wigan's main shopping centre The Grand Arcade includes many additional large stores such as M&S, Debenhams and TKMaxx.

To visit the site, use postcode WN6 7QF for Canal Street.

Deposit: £1440
Unfurnished
Council tax: B
Available 18th August 2025





Key Features

- Private driveway
- Fitted wardrobes to master bedroom
- Fridge freezer
- Oven and hob
- Dark ash style worktops
- Security alarm system
- Dishwasher
- Washing/drying machine
- Light wash wood effect flooring
- Modern, white kitchen units

Location

