

SIMPLE LIFE

SIMPLE LIFE



Empyrean, Salford, M7

£1,195 Per Month

A Striking new development of apartments in Salford, just a 20 minute walk from Manchester's Deansgate.
Inspired by astronomer William Crabtree who made the area his home in the 1600s, Empyrean translates as the highest heaven – and you can call a slice of it your own!

The Halley is a two bedroom apartment ideally designed for shared accommodation, inspired by Edmond Halley, a British astronomer famous for computing the orbit of Halley's Comet, but also for his collaborations with his peers. When you enter the Halley you walk straight into the hub of the home; the kitchen/diner with integrated appliances gives you an ideal entertaining space.

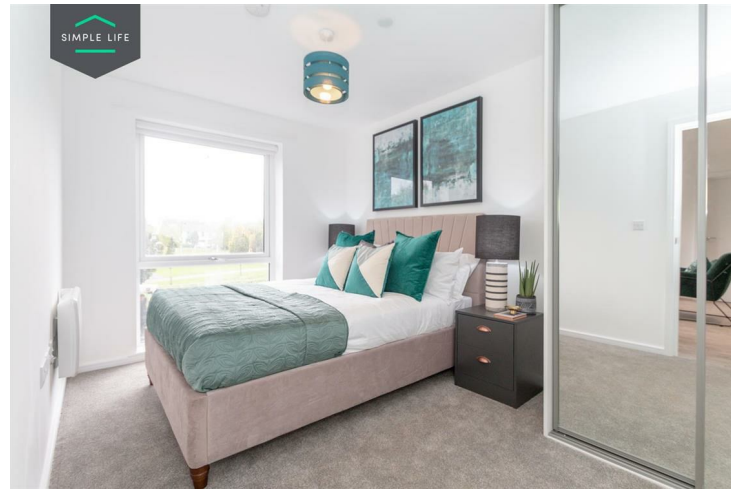
As you go further into the apartment, the room becomes a good sized living area with French windows opening onto a Juliet balcony on the ground floor or full balcony on upper floors bringing in natural light and enhancing the property's views. The two bedrooms are equal in size mirroring each other on either side of the apartment, each with a fully fitted bathroom, with one also having access through to the kitchen/diner.

With 298 apartments spread across six blocks either side of the newly renovated Church of Ascension, we have a range of 1, 2 and 3 bedroom properties available including those designed specifically for people sharing. Situated directly opposite Green Grosvenor Park and a stone's throw away from the river Irwell, these homes have something to offer to all. Ideal for professionals, young families or couples wanting an easy commute without the city centre price tag.

At Empyrean, you get the best of both worlds from the privacy of your own space to the bustling heart of the city. Our expertise is in professionally managed, high quality homes, and that's what we offer you. For the best choice of gyms, bars, restaurants and shops, why compete with everything Manchester has on your doorstep!

Deposit: £1370
Holding deposit: £270
Furnished
Council tax: B
Available 10th February 2026





Key Features

- Fitted wardrobes to main bedroom
- Fridge freezer
- Oven and hob
- Dark ash style worktops
- Light wood or white interior doors
- Dishwasher
- Washing/drying machine
- Light wash wood effect flooring
- Modern, white kitchen units
- Light grey carpets in the bedrooms

Location

