



SIMPLE LIFE



SIMPLE LIFE



Cargo Lane, Bury St. Edmunds, IP32

£1,365 PCM

We're delighted to present Fornham Place, part of the Marham Park village development on the outskirts of Bury St Edmunds.

Entering the porch of the Appleby, you step through into a wonderful open plan kitchen space, before moving into the living and dining area complete with under stairs store cupboard. French windows lead out to your private garden.

Upstairs, you will find two good sized double bedrooms and family bathroom complete with shower over bath. The Appleby offers a comfortable space for couples wanting some extra room or young families finding their first home.

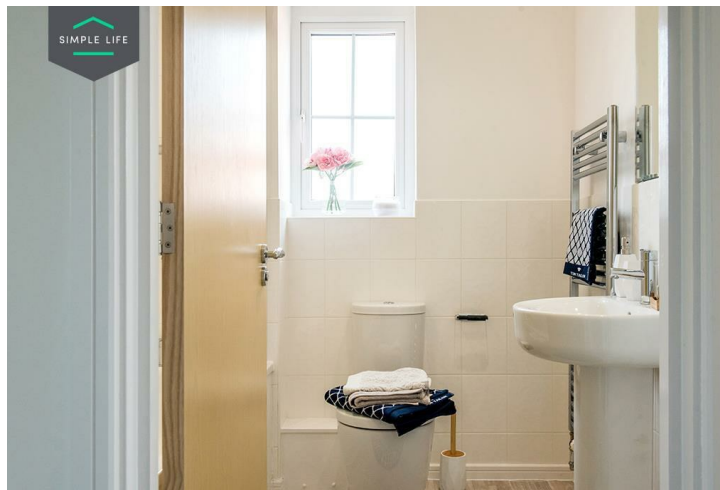
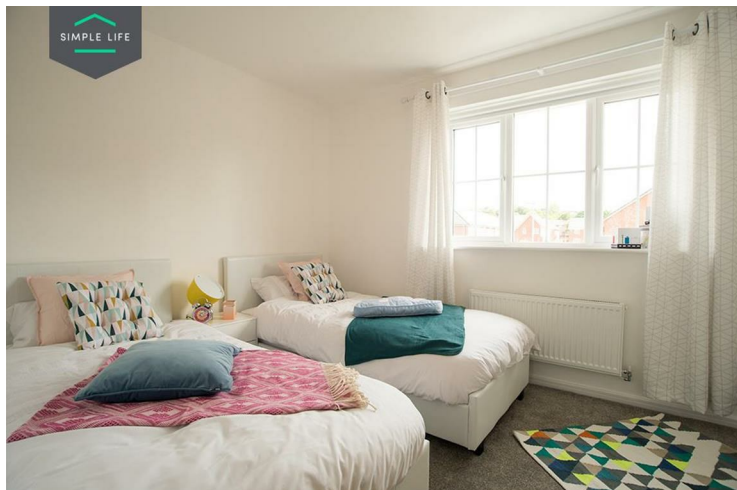
The site benefits from proximity to 20 schools rated 'Good' or 'Outstanding' by Ofsted, as well as the Arc shopping centre and Western Way Retail Parks nearby, providing a good range of shops, restaurants and leisure facilities.

Transport links are highly accessible from Fornham Place too, being just over a mile from the A14, and Bury St Edmunds train station also allowing direct services to Ipswich, Cambridge, Norwich and onwards to London.

To visit the site, use postcode IP32 6TN with the site north of Markham Parkway.

Deposit £1570
Holding deposit £310
Council tax B
Unfurnished
Available 22nd January 2026





Key Features

- Private driveway
- Fridge Freezer
- Washing machine
- Wood effect flooring downstairs
- Carpets in bedrooms and stairs
- Security alarm system
- Oven and Hob
- Dishwasher
- Modern, white kitchen units
- Private back garden

Location

