



SIMPLE LIFE



SIMPLE LIFE



## Jerry Rails Avenue, Telford, TF4

£1,150 PCM

Welcome to Simple Life's Silkin Green homes. Silkin Green is less than a mile away from Telford Town Centre and is within walking distance of Stirchley Village and Dawley.

The Ellesmere is a stunning home built with your needs in mind. Downstairs, there is a generous living room, hallway and WC. The rear of the property has a magnificent living/kitchen area with a range of contemporary fitted units with integrated appliances. The room has French windows opening onto and overlooking the rear garden as well as a series of skylights which flood the room with light – an ideal space for both family time and entertaining.

Upstairs there is a spacious family bathroom complete with a bath and shower, a master bedroom with fitted, mirrored wardrobes and two further well-proportioned bedrooms. At the top of the stairs you will also find a handy store cupboard.

Thanks to the M54 the site has excellent transport links with Shrewsbury 24km (15 mile) to the West and Birmingham and Wolverhampton within easy commutable distance at around 48km (30 miles) to the South East.

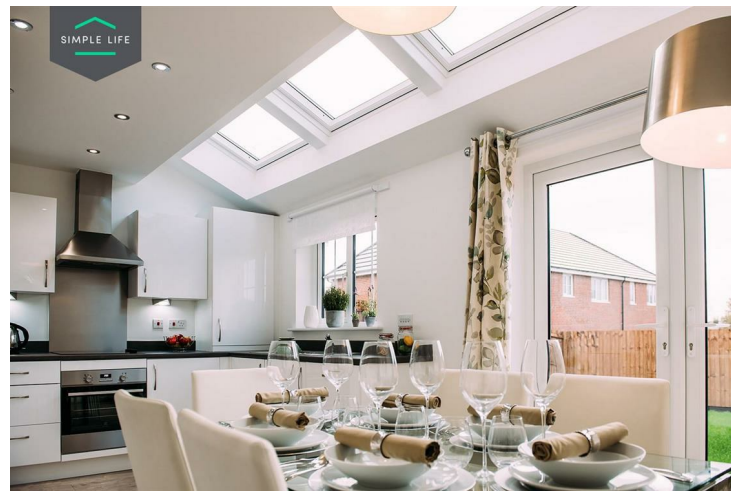
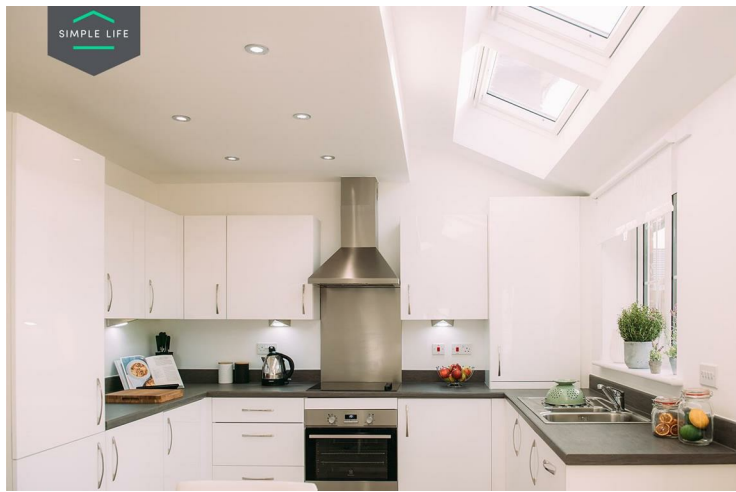
This site is perfectly situated, in an area within walking distance to all the new shopping and leisure facilities of Telford, but in an area with lovely views, adjacent to the Town Park, giving the location a rural feel, yet close to the motorway networks, all the necessary amenities.

The nearby shopping centre includes a Cineworld cinema, and many bars and restaurants. The Telford Forge Retail Park also includes a Sainsbury's Supermarket, Tesco Extra.

Deposit £1320  
Holding Deposit £260  
Unfurnished  
Council Tax C  
Available 20th January 2026







## Key Features

- Private driveway
- Fitted wardrobes to master bedroom
- Fridge freezer
- Oven and hob
- Dark ash style worktops
- Security alarm system
- Dishwasher
- Washing/drying machine
- Light wash wood effect flooring
- Modern, white kitchen units

## Location

