



SIMPLE LIFE



SIMPLE LIFE

Register Your Interest - Emphyrean Open Day Monday 13th October

email contactus@simplelifehomes.com for further information



Emphyrean, Salford, M7

£995 PCM

A Striking new development of apartments in Salford, just a 20 minute walk from Manchester's Deansgate. Inspired by astronomer William Crabtree who made the area his home in the 1600s, Emphyrean translates as the highest heaven – and you can call a slice of it your own!

The Crabtree is a beautiful one bed apartment named after William Crabtree, the 17th century astronomer born and bred in Salford.

As you walk in the front door, you are met with a large kitchen/ diner fully fitted with appliances as well as handy store cupboard for extra space. This area leads you into the living room towards the back of the apartment. Featuring French windows that open onto your balcony, this is the perfect haven for lazy afternoons and sunsets.

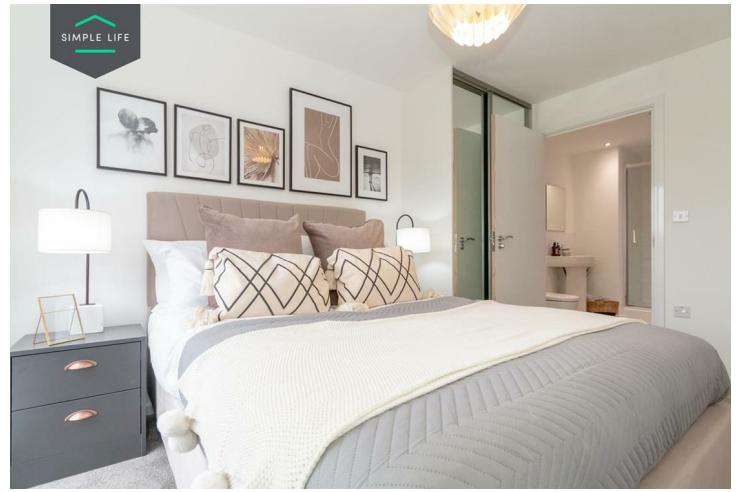
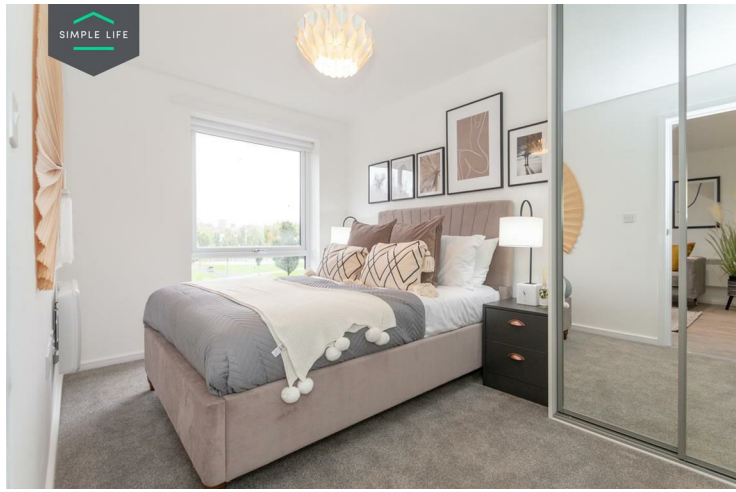
Ground floor apartments will include a Juliet balcony for extra security, whilst the upper floors benefit from larger outdoor spaces. Off the living room, you will find your bedroom with access to a stylish shower room.

At Emphyrean, you get the best of both worlds from the privacy of your own space to the bustling heart of the city. Our expertise is in professionally managed, high quality homes, and that's what we offer you. For the best choice of gyms, bars, restaurants and shops, why compete with everything Manchester has on your doorstep!

Access to the site is via Lower Broughton Road to the West or Great Clowes Street to the East, with entrances to the blocks on Clarence Street. Postcode M7 1GA will bring you to the area.

Deposit: £1140
Furnished
Council Tax A
Available 27th October 2025





Key Features

- Fitted wardrobes to master bedroom
- Washing/drying machine
- Modern, white kitchen units
- White blinds in the bedrooms
- Dishwasher/fridge-freezer
- Light wash wood effect flooring
- Light grey carpets in the bedrooms
- Full length grey curtains in living area

Location

