



SIMPLE LIFE



GO GET
YOUR FIRST
MONTH'S RENT
FREE!*

**Available on selected properties
for a limited time only.*

Park Grange House, Sheffield, S2

£1,045 PCM

Welcome to Park Grange House offering beautiful 2-bedroom apartments.

The Ash has so much to offer, with a large, expansive living/dining room linked to a modern kitchen. Integrated kitchen appliances and lots of storage space give you plenty of room to live and entertain. Also benefiting from a contemporary bathroom and two double bedrooms, the Ash is the perfect space for friends sharing, couples and young families.

Conveniently situated just a few minutes from the city centre, Sheffield's celebrated shopping and leisure attractions couldn't be closer, with a regular tram stop on your doorstep which offers a service in to the city centre every 15 minutes, and the main train station less than a mile away.

If you're heading further afield, the A61 inner ring road is close by, as are a good choice of schools.

To visit Park Grange House, please use postcode S2 3DB in your satnav.

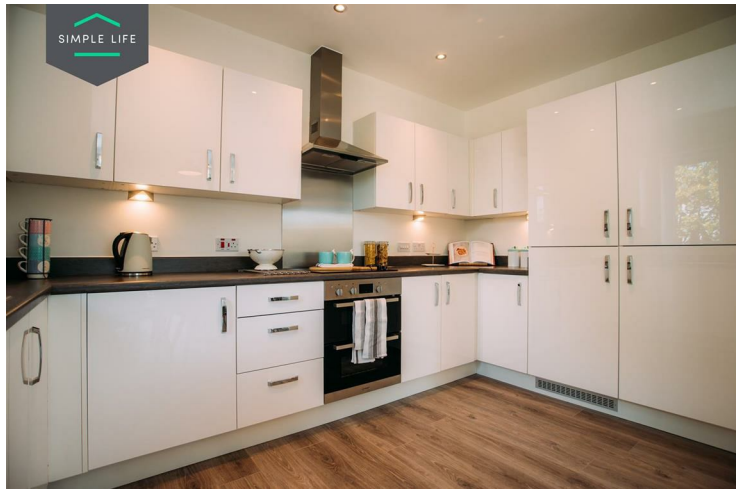
Deposit: £1200

Council Tax: A

Unfurnished

Available 12th September 2025





Key Features

- Allocated parking space
- Dishwasher
- Washing/drying machine
- Light wash wood effect flooring
- Modern, white kitchen units
- Fitted wardrobes to master bedroom
- Fridge freezer
- Oven and hob
- Dark ash style worktops
- White blinds to all bedrooms, living and bathroom

Location

