



## Medway Close, Sheffield

£1,345 PCM

East Hill Gardens is just one mile away from Sheffield city centre. Immediately adjacent to the site, you will find a tram stop which supplies regular transport in to the heart of the city. The A61, inner city ring road and main line train station all within 1 mile of the site.

Split across three floors, the Hawthorn is a very popular home with growing families. The Hawthorn offers plenty of space with a large living room, French windows leading to your private back garden and a large open-plan kitchen/dining room.

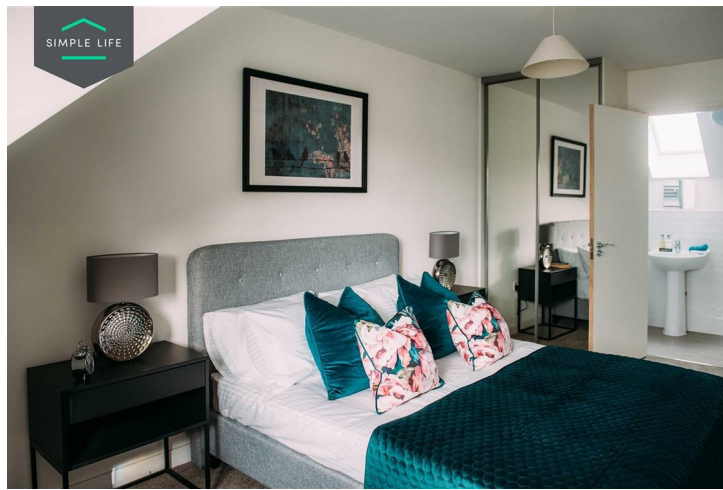
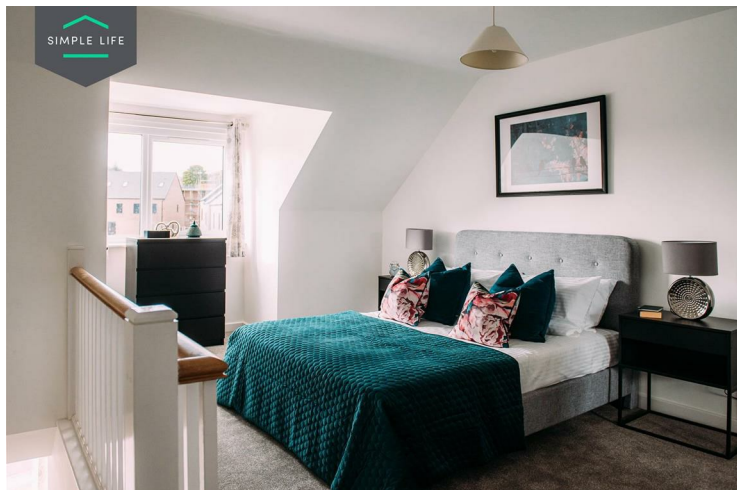
The first floor features two double bedrooms with a family bathroom, complete with both a bath and shower. At the end of the hall you will find a door opening on to a separate lobby area (often used as a small office). This leads on to a very desirable master bedroom and en-suite bathroom on the second floor, offering a peaceful haven for the adults.

The Royal Hallamshire Hospital is just a two mile drive away and The University of Sheffield and Sheffield Hallam University are both within easy commuting distance. Heritage and Norfolk Park are also within an easy walk from the site. As well as sitting close to the city centre, there's plenty of shops and good local schools nearby.

To visit East Hill Gardens, please use postcode S2 3PS in your Satnav.

Deposit £1550  
Council Tax B  
Unfurnished  
Available 23rd July 2025





## Key Features

- Car Parking Space
- Dishwasher
- Washing/drying machine
- Carpets up the stairs and in the bedrooms
- Private back garden
- Security Alarm
- Fridge-freezer
- Modern kitchen worktops and units
- Blinds in the bedrooms

## Location

