



SIMPLE LIFE



SIMPLE LIFE



## Our Lady's, Manchester, M28 0LB

£1,275 PCM

Welcome to Simple Life's Our Lady's homes. Our Lady's development is well located; situated less than 1 mile from the A6, one of the main arterial routes into Manchester city centre. The site is also close to the A580 providing access to the motorway network including the M61, M60 and M62.

The Ellesmere is a stunning home built with your needs in mind. Downstairs, there is a generous living room, hallway and WC. The rear of the property has a magnificent living/kitchen area with a range of contemporary fitted units with integrated appliances. The room has French windows opening onto and overlooking the rear garden as well as a series of skylights which flood the room with light – an ideal space for both family time and entertaining.

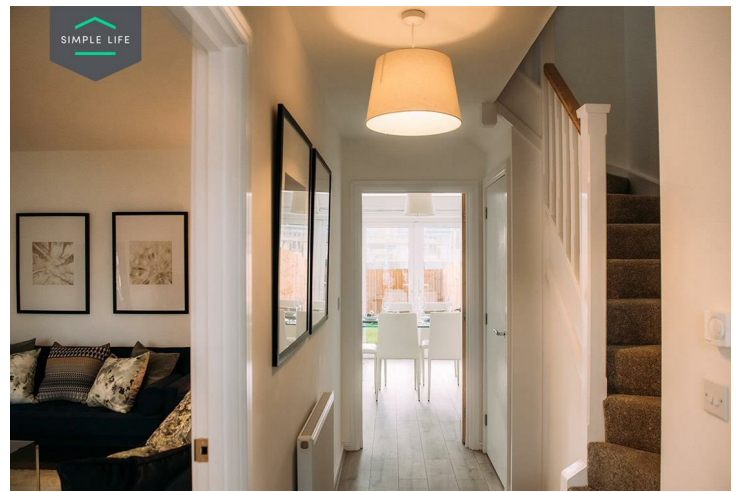
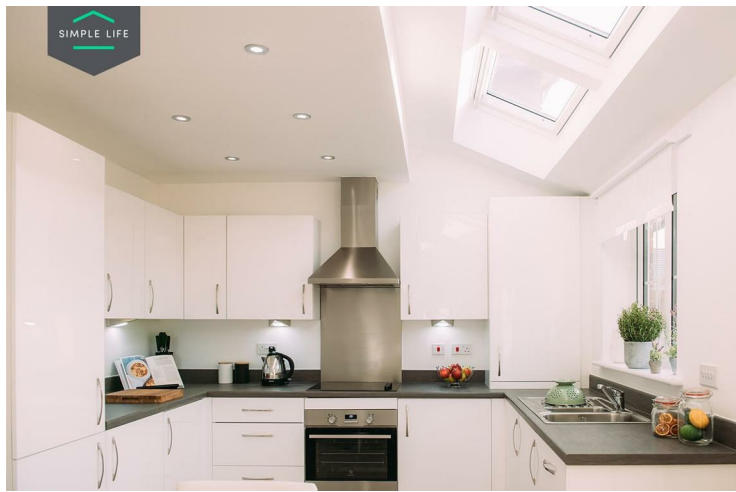
Upstairs there is a spacious family bathroom complete with a bath and shower, a master bedroom with fitted, mirrored wardrobes and two further well-proportioned bedrooms. At the top of the stairs you will also find a handy store cupboard.

The towns of Worsley, Walkden, Bolton and Swinton are all nearby. The site is also approximately 1 mile away from Walkden train station which provides a regular service into Manchester city centre, with a travel time of just 15 minutes into Manchester Victoria station.

Deposit £1470  
Unfurnished  
Council Tax B  
Available 22nd July 2025







## Key Features

- Private driveway
- Fitted wardrobes to master bedroom
- Fridge freezer
- Oven and hob
- Dark ash style worktops
- Security alarm system
- Dishwasher
- Washing/drying machine
- Light wash wood effect flooring
- Modern, white kitchen units

## Location

