

SIMPLE LIFE

SIMPLE LIFE



## Kirkleatham Green, Redcar, TS10

£1,025 PCM

Situated in the seaside town of Redcar, Kirkleatham Green sits 8 miles east of Middlesbrough. With Redcar train station less than 2 miles away, the site offers direct and easy access to Middlesbrough, Darlington and Hartlepool. The area is also well connected by the nearby A19 taking you north to Sunderland and Tyneside or south to North Yorkshire.

Introducing the Eveleigh, a beautiful 3 bedroom home ideal for couples and families. On the ground floor, there is an open plan kitchen/diner fully fitted with appliances to one side with a convenient downstairs cloakroom to the other side. As you walk through the property, you're led into a bright and spacious living area with French windows opening out onto your private back garden. This room also benefits from a built in cupboard for extra storage.

Upstairs, there is large main bedroom complete with fitted mirrored wardrobes and 2 further bedrooms. Towards the front of the property is a modern, family bathroom, completing the property.

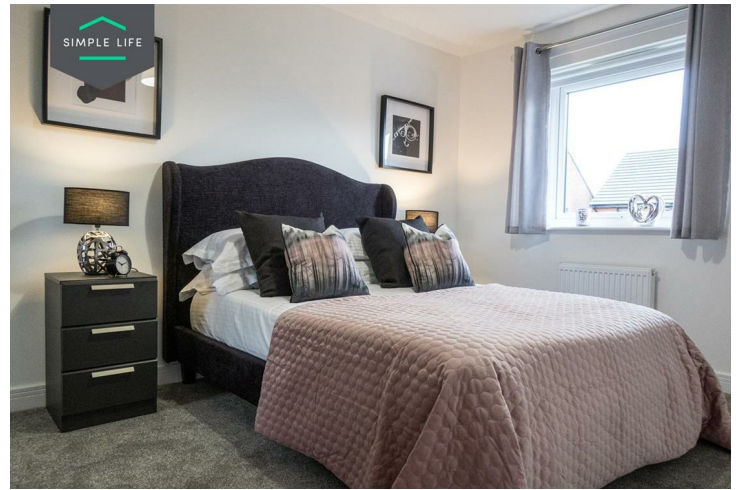
You'll have endless opportunities for leisure with easy access to Redcar's sandy beaches as well as the picturesque coast and riverside walks of the Tees Valley. The area delivers a range of pubs and restaurants as well as a popular weekly market in Redcar. To meet your shopping requirements, there is an Asda, Aldi and Sainsbury's all within 2 miles of the site.

The area benefits from 13 Ofsted rated good schools and 3 Ofsted rated outstanding schools within 3 miles of the site including Riverdale Primary School and Green Gates Primary School.

To access the site use post code TS10 4GY.

Deposit: £1180  
Council Tax: C  
Unfurnished  
Available 8th July 2025





## Key Features

- Car Parking Space
- Dishwasher
- Washing/drying machine
- Carpets up the stairs and in the bedrooms
- Blinds in the bedrooms
- Security Alarm
- Fridge-freezer
- Modern kitchen worktops and units
- Private back garden

## Location

