



SIMPLE LIFE



SIMPLE LIFE



Canal Street, Wigan

£1,095 PCM

The site benefits from close proximity (1.4 miles) to Wigan town centre and a good strategic location – less than 20 miles from both Manchester and Liverpool city centres with excellent connectivity via road and rail, being 3 miles from the M6/M58 interchange.

The Irwell is a stunning home built with you in mind. Entering through the front door you are welcomed by an attractive kitchen with a range of contemporary fitted units and modern integrated appliances. Heading through the hallway will take you into a spacious living/dining area which is finished with beautiful wooden flooring and French windows which open out onto your private rear garden. The lower floor also benefits from a storage cupboard and WC.

Upstairs you will find two spacious double rooms, the master bedroom including a fitted, mirrored wardrobe, whilst the second bedroom benefits from having built in storage space. There is also a main bathroom equipped with a bath and shower.

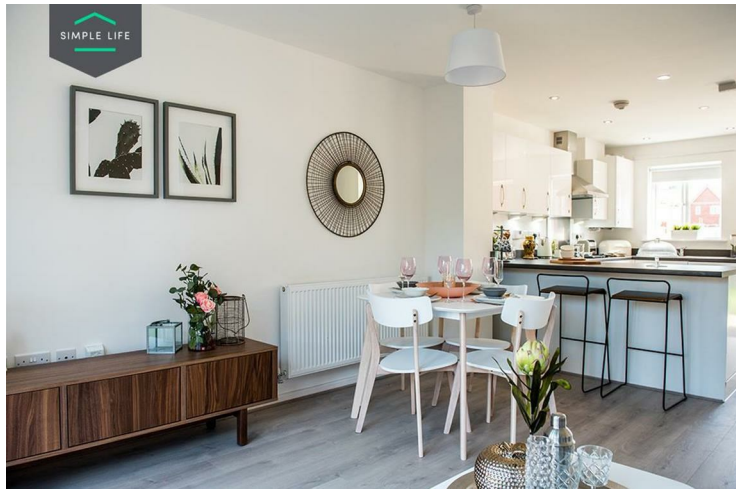
Ideal for families, there are 45 primary and secondary schools rated 'Good' or 'Outstanding' by Ofsted within 3 miles of the site.

Robin Retail & Leisure Park is one of the Borough's principle sport, leisure and retail complexes, featuring a multiplex cinema, major retail brands including Next and Matalan, as well as a football centre and gym. In addition, Wigan's main shopping centre The Grand Arcade includes many additional large stores such as M&S, Debenhams and TKMaxx.

To visit the site, use postcode WN6 7QF for Canal Street.

Deposit £1260
Council Tax B
Unfurnished
Available 4th July 2025





Key Features

- Private driveway
- Fitted wardrobes to master bedroom
- Fridge freezer
- Oven and hob
- Modern, white kitchen units
- Security alarm system
- Dishwasher
- Washing/drying machine
- Light wash wood effect flooring
- Patio area in the private back garden

Location

