



SIMPLE LIFE



SIMPLE LIFE



Quarrymans View, Worsley, Manchester

£1,050 PCM

Welcome to Simple Life's Our Lady's homes. Our Lady's development is well located; situated less than 1 mile from the A6, one of the main arterial routes into Manchester city centre.

The Irwell is a stunning home built with you in mind.

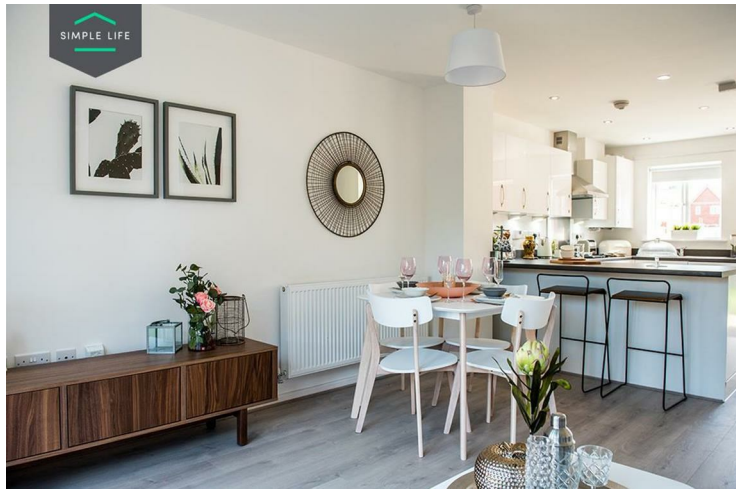
Entering through the front door you are welcomed by an attractive kitchen with a range of contemporary fitted units and modern integrated appliances. Heading through the hallway will take you into a spacious living/dining area which is finished with beautiful wooden flooring and French windows which open out onto your private rear garden. The lower floor also benefits from a storage cupboard and WC.

Upstairs you will find two spacious double rooms, the master bedroom including a fitted, mirrored wardrobe, whilst the second bedroom benefits from having built in storage space. There is also a main bathroom equipped with a bath and shower.

The site is close to the A580 providing access to the motorway network including the M61, M60 and M62. The towns of Worsley, Walkden, Bolton and Swinton are all nearby. The site is also approximately 1 mile away from Walkden train station which provides a regular service into Manchester city centre, with a travel time of just 15 minutes into Manchester Victoria station.

Deposit: £1210
Unfurnished
Council tax: A
Available 2nd July 2025





Key Features

- Private driveway
- Fitted wardrobes to master bedroom
- Fridge freezer
- Oven and hob
- Dark ash style worktops
- Security alarm system
- Dishwasher
- Washing/drying machine
- Light wash wood effect flooring
- Modern, white kitchen units

Location

