

SIMPLE LIFE

SIMPLE LIFE



## Pullman Green, Doncaster, DN4

£950 PCM

With Doncaster train station just a 10 minute walk away, this site boasts excellent transport links providing direct services to London, Manchester and Edinburgh plus many more. You'll be extremely well connected with the A1 less than two miles away to take you North & South of the region.

The Irwell is a stunning home built with you in mind. Entering through the front door you are welcomed by an attractive kitchen with a range of contemporary fitted units and modern integrated appliances. Heading through the hallway will take you into a spacious living/dining area which is finished with beautiful wooden flooring and French windows which open out onto your private rear garden. The lower floor also benefits from a storage cupboard and WC.

Upstairs you will find two spacious double rooms, the master bedroom including a fitted, mirrored wardrobe, whilst the second bedroom benefits from having built in storage space. There is also a main bathroom equipped with a bath and shower.

Doncaster City centre includes a range of high street and independent retailers including The Frenchgate shopping centre featuring a new cinema and restaurant complex. The area of Hexthorpe benefits from an array of local independent cafes and restaurants as well as leisure facilities to suit all the family.

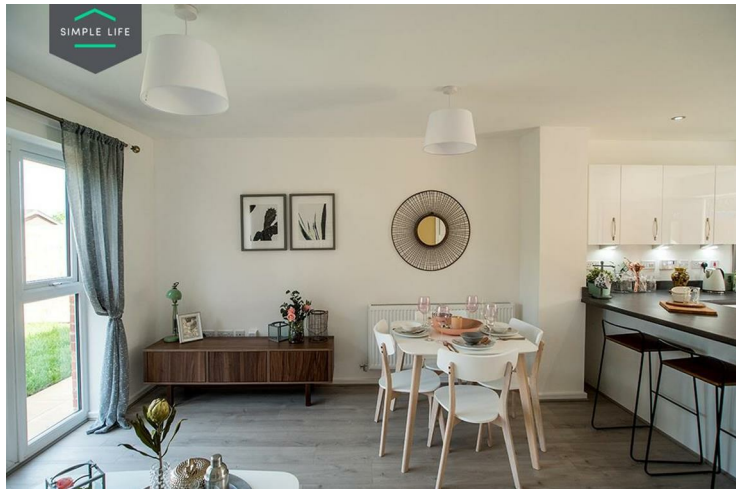
Your education needs will be well catered for with seven Ofsted rated good & two Ofsted rated outstanding schools within two miles of Pullman Green.

To access the site use the postcode DN4 0BE via Flowitt Street.

Deposit £1090  
Unfurnished  
Council Tax A  
Available 3rd June 2025







## Key Features

- Car Parking Space
- Dishwasher
- Washing/drying machine
- Carpets up the stairs and in the bedrooms
- Blinds in the bedrooms
- Security Alarm
- Fridge-freezer
- Modern kitchen worktops and units
- Private back garden
- Electric car charging point ready

## Location

