

SIMPLE LIFE

SIMPLE LIFE



## Bluebell Manor, Telford, TF1

£995 PCM

Situated in the desirable town of Arleston just 3 miles away from Telford, Bluebell Manor is a stunning development of 31 homes exclusively to rent.

The Irwell is a stunning home built with you in mind. Entering through the front door you are welcomed by an attractive kitchen with a range of contemporary fitted units and modern integrated appliances. Heading through the hallway will take you into a spacious living/dining area which is finished with beautiful wooden flooring and French windows which open out onto your private rear garden. The lower floor also benefits from a storage cupboard and W/C.

Upstairs you will find two spacious double rooms, the master bedroom including a fitted, mirrored wardrobe, whilst the second bedroom benefits from having built in storage space. There is also a main bathroom equipped with a bath and shower.

Bluebell Manor gives you the best of both worlds as it boasts a green setting with easy access to Birmingham city centre just 25 miles away. Commuters will be well placed as Wellington Train station is less than 2 miles from the site offering regular service to Telford, Wolverhampton and Birmingham. Alternatively, for the drivers, the site is conveniently placed for the M54 connecting you to the M6 area offering access to both north and south of the region.

This development benefits from excellent local facilities such as Wrekin Retail park only 1 mile away, offering an Asda living, Boots and a Costa Coffee. Shopaholics will be spoilt for choice as the nearby town of Wellington, provides a selection of smaller independent shops and cafes.

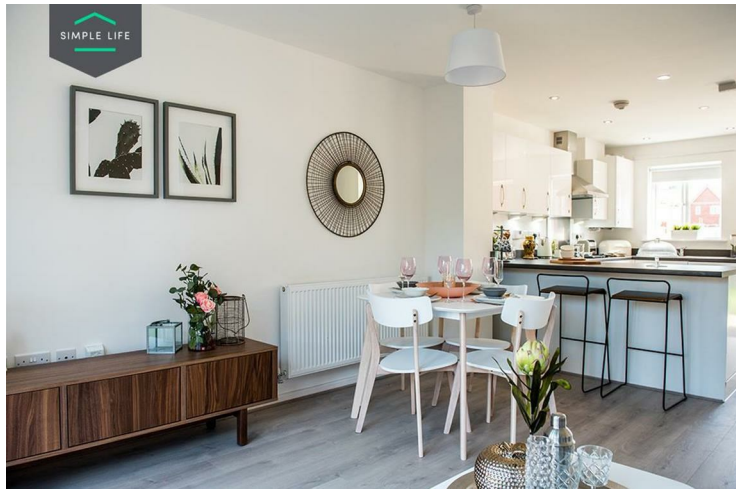
Finally, your education needs will be well catered for with 23 Ofsted rated good and 5 Ofsted rated outstanding schools all within 3 miles of the site, including Lawley Primary School and Short Wood Primary School.

To access the site, please use postcode TF1 2NA.

Deposit £1140  
Unfurnished  
Council Tax B  
Available 17th June 2025







## Key Features

- Car Parking Space
- Modern kitchen worktops and units
- Fridge freezer
- Carpets up the stairs and in the bedrooms
- Private back garden
- Security alarm system
- Dishwasher
- Washing machine
- Blinds in the bedrooms

## Location

