



Pullman Green, Hexthorpe, DN4

£1,195 PCM

With Doncaster train station just a 10 minute walk away, this site boasts excellent transport links providing direct services to London, Manchester and Edinburgh plus many more. You'll be extremely well connected with the A1 less than two miles away to take you North & South of the region.

Take a step inside the Lymington FS, a fabulous four-bedroom home designed with you in mind.

As you enter the property, the living area to one side provides a great space for entertaining and family time, and features a stunning bay window. At the rear of the property, you will find the kitchen / dining area including integrated appliances, a breakfast bar and another living area. The room benefits from an array of natural light from the skylight windows and patio doors leading out to the rear garden. The downstairs also benefits from a WC and storage cupboard.

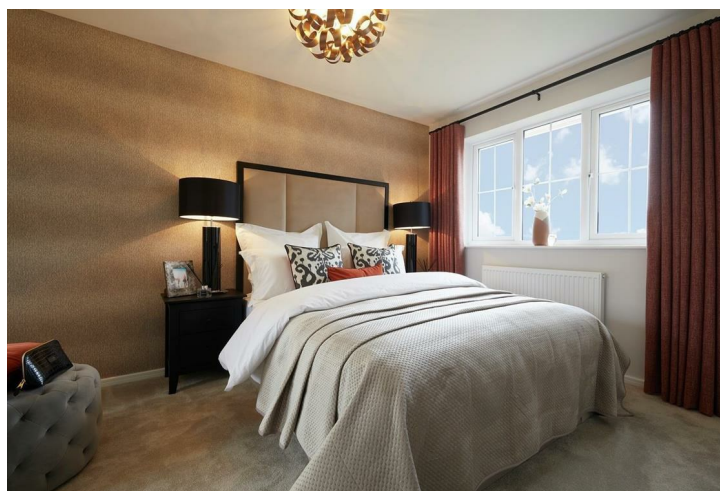
On the first floor, the bedrooms and bathroom are sited around a central landing, with the family bathroom that includes a shower and bathtub. The main bedroom also benefits from an ensuite bathroom and fitted wardrobes with mirrored sliding doors, enjoying extra floor space being situated above the garage.

Doncaster City centre includes a range of high street and independent retailers including The Frenchgate shopping centre featuring a new cinema and restaurant complex. The area of Hexthorpe benefits from an array of local independent cafes and restaurants as well as leisure facilities to suit all the family.

To access the site use the postcode DN4 0BE via Flowitt Street.

Deposit £1520
Unfurnished
Council Tax: D
Available 1st May 2025





Key Features

- Car Parking Space
- Dishwasher
- Washing/Drying Machine
- Carpets up the stairs and in the bedrooms
- Blinds in the bedrooms
- Security Alarm
- Fridge/Freezer
- Modern kitchen worktops and units
- Private back garden
- Electric car charging point ready

Location

