

SIMPLE LIFE

SIMPLE LIFE



## Silkin Green, Dawley, Telford, TF4

£1,025 PCM

Welcome to Simple Life's Silkin Green homes. Silkin Green is less than a mile away from Telford Town Centre and is within walking distance of Stirchley Village and Dawley. Thanks to the M54 the site has excellent transport links with Shrewsbury 24km (15 mile) to the West and Birmingham and Wolverhampton within easy commutable distance at around 48km (30 miles) to the South East.

The Irwell is a stunning home built with you in mind. Entering through the front door you are welcomed by an attractive kitchen with a range of contemporary fitted units and modern integrated appliances. Heading through the hallway will take you into a spacious living/dining area which is finished with beautiful wooden flooring and French windows which open out onto your private rear garden. The lower floor also benefits from a storage cupboard and WC.

Upstairs you will find two spacious double rooms, the master bedroom including a fitted, mirrored wardrobe, whilst the second bedroom benefits from having built in storage space. There is also a main bathroom equipped with a bath and shower.

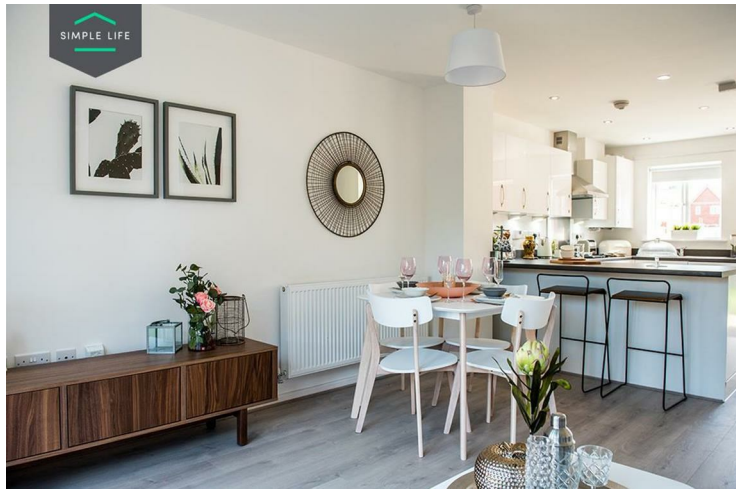
This site is perfectly situated, in an area within walking distance to all the new shopping and leisure facilities of Telford, but in an area with lovely views, adjacent to the Town Park, giving the location a rural feel, yet close to the motorway networks, all the necessary amenities.

The nearby shopping centre includes a Cineworld cinema, and many bars and restaurants. The Telford Forge Retail Park also includes a Sainsbury's Supermarket, Tesco Extra.

Deposit: £1180  
Council Tax: B  
Unfurnished  
Available 18th June 2025







## Key Features

- Private driveway
- Fitted wardrobes to master bedroom
- Fridge freezer
- Oven and hob
- Dark ash style worktops
- Security alarm system
- Dishwasher
- Washing/drying machine
- Light wash wood effect flooring
- Modern, white kitchen units

## Location

