



SIMPLE LIFE



SIMPLE LIFE



## Woodbine Road, Liverpool

£1,150 PCM

Welcome to Simple Life's Woodbine Road homes. Live at the heart of a friendly community in Liverpool's desirable L25 district. Enjoy flexibility and freedom with these stylish modern homes in a premium setting to suit your lifestyle.

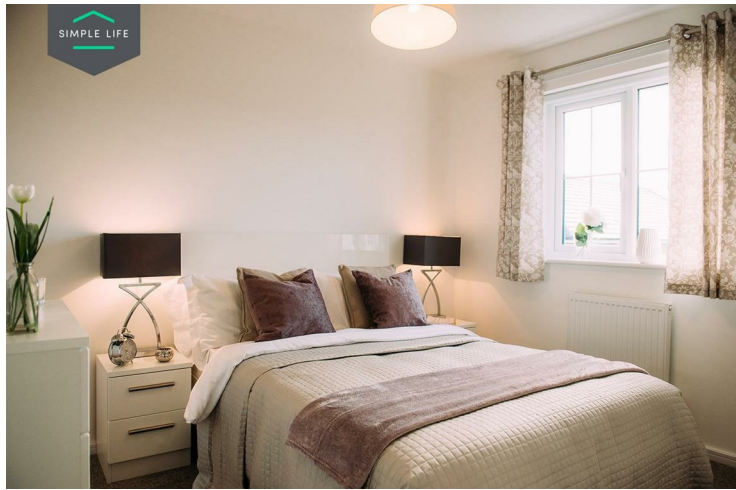
The Ellesmere is a stunning home built with your needs in mind. Downstairs, there is a generous living room, hallway and WC. The rear of the property has a magnificent living/kitchen area with a range of contemporary fitted units with integrated appliances. The room has French windows opening onto and overlooking the rear garden as well as a series of skylights which flood the room with light – an ideal space for both family time and entertaining.

Upstairs there is a spacious family bathroom complete with a bath and shower, a master bedroom with fitted, mirrored wardrobes and two further well-proportioned bedrooms. At the top of the stairs you will also find a handy store cupboard.

Deposit: £1320  
Council Tax: Band B  
Available 25th April 2025







## Key Features

- Private driveway
- Fitted wardrobes to master bedroom
- Fridge freezer
- Oven and hob
- Dark ash style worktops
- Security alarm system
- Dishwasher
- Washing/drying machine
- Light wash wood effect flooring
- Modern, white kitchen units

## Location

