

SIMPLE LIFE

SIMPLE LIFE



## Beehive Mill, Bolton, BL3

£1,010 PCM

Situated just to the south side of Bolton Town Centre, Beehive Mill is wonderful new development of 2, 3 and 4 bedroom homes offering a perfect mix of urban and rural living.

The Irwell is a stunning home built with you in mind. Entering through the front door you are welcomed by an attractive kitchen with a range of contemporary fitted units and modern integrated appliances. Heading through the hallway will take you into a spacious living/dining area which is finished with beautiful wooden flooring and French windows which open out onto your private rear garden. The lower floor also benefits from a storage cupboard and WC.

Upstairs you will find two spacious double rooms, the master bedroom including a fitted, mirrored wardrobe, whilst the second bedroom benefits from having built in storage space. There is also a main bathroom equipped with a bath and shower.

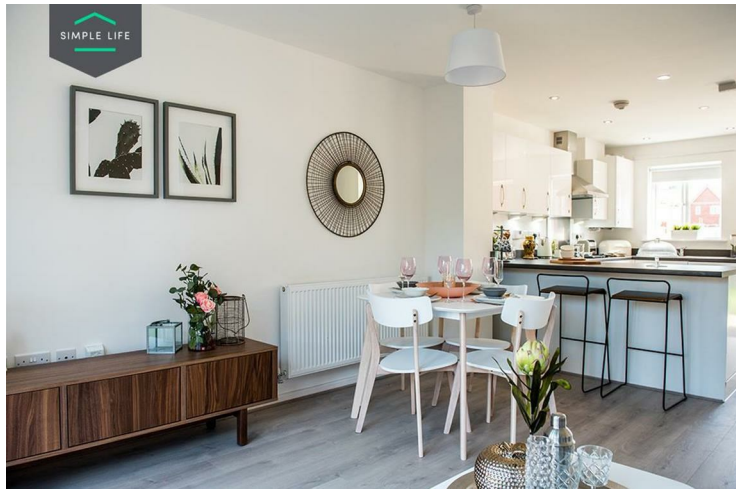
Beehive Mill is less than 2 miles south of Bolton, and only 9 miles North of Manchester. The site benefits from excellent transport links as Moses Gate train station is less than a mile away providing direct access to Bolton, Manchester, Wigan and Blackburn. Alternatively, you'll have easy access to M61 taking you to Lancashire, Merseyside and beyond.

You'll be ideally placed for nightlife as Bolton town centre has plenty of lively pubs and restaurants. For the shopaholics there is Burnden Park shopping centre close by, whilst Bolton itself has a plethora of high street outlets. For those who seek the great outdoors, there is Moses Gate Country Park offering fishing and water sports and nature reserve activities.

Deposit £1,260  
Council Tax A  
Unfurnished  
Available 11th April 2025







## Key Features

- Car Parking Space
- Dishwasher
- Washing/drying machine
- Carpets up the stairs and in the bedrooms
- Private back garden
- Security Alarm
- Fridge-freezer
- Modern kitchen worktops and units
- Blinds in the bedrooms

## Location

