



## Hollybrook, Bradford, BD10

£1,125 PCM

Located immediately next to the Eccleshill Pool & Leisure Centre, Sainsbury's Supermarket, and Matalan store, the site is less than 5 miles to Leeds Bradford Airport with close proximity to Bradford, Leeds, Huddersfield, Harrogate and Wakefield.

The Leathley is a wonderful family home with plenty of space.

Entering through the hallway, your living room is at the front of the property before leading through to an open plan kitchen/dining area. With a WC and French windows to your private garden, the downstairs has space to entertain and relax.

On the second floor the master bedroom comes complete with en-suite shower room and storage cupboard, whilst a family bathroom with shower and bath is found along the landing. A further two bedrooms – one double and one single – complete the layout upstairs.

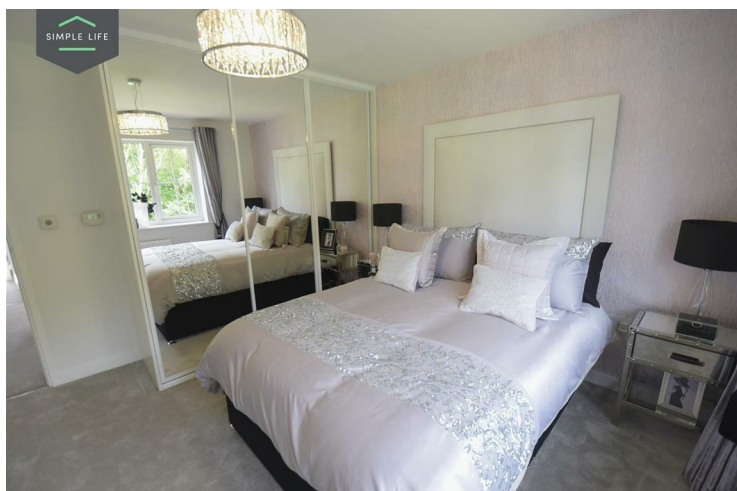
The development benefits from being within 3 miles of 60 'Good' or 'Outstanding' primary and secondary schools and colleges, with Holybrook Primary School just 5 minutes' walk away. Less than 2 miles from the city centre, there is access to the new Broadway shopping centre and diverse high street.

SatNav postcode BD10 0EH will bring you onto Romanby Shaw, with the development sited immediately east of the leisure centre.

Deposit: £1290  
Unfurnished  
Council tax: B  
Available 21st May 2025







## Key Features

- Car Parking Space
- Dishwasher
- Washing/drying machine
- Carpets up the stairs and in the bedrooms
- Blinds in the bedrooms
- Security Alarm
- Fridge-freezer
- Modern kitchen worktops and units
- Private back garden

## Location

