



SIMPLE LIFE



SIMPLE LIFE



Abbotsfield, St Helens, WA9

£1,125 PCM

Abbotsfield is a fantastic development of 102 properties 3 miles from the centre of St Helens. A thriving town, St Helens benefits from excellent retail and leisure opportunities whilst being within 25 miles of Manchester and 12 of Liverpool and Warrington.

The welcoming central hallway of the Grantham sits in between the living room and the kitchen. A house designed with you in mind, the spacious lounge provides the perfect area to relax, whilst the dining/kitchen area provides a great place to spend time and entertain with its French windows opening on to the garden. A WC is conveniently situated off the hallway, completing the downstairs.

Upstairs, the house has a large master bedroom with fitted, mirrored wardrobes, and a further two bedrooms. A stylish family bathroom with a separate bath and shower provides the best of both worlds, whilst a store room on the landing provides a space to store bits and pieces.

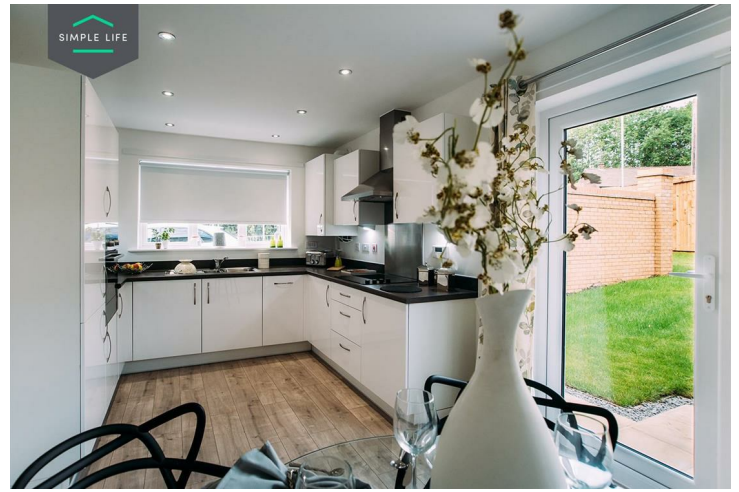
The train station is a 7 minute walk from the site providing direct services to Liverpool and Manchester, ideal for commuters. Ravenshead Retail Park is just 6 miles away, with the Sherdley Park nearby too for those who are after a bit of time with nature.

Abbotsfield is also well placed for excellent school places, with 14 primary and secondary schools within 3 miles rated Outstanding or Good by Ofsted, including Mill Green School, Parish Church of England Primary School, and Allanson Street Primary School.

For houses to rent in St Helens, use postcode WA9 4JB to reach Abbotsfield, on the corner of Reginald Road and Bold Road.

Deposit: £1290
Unfurnished
Council tax: B
Available 30th April 2025





Key Features

- Private driveway
- Fitted wardrobes to master bedroom
- Fridge freezer
- Oven and hob
- Dark ash style worktops
- Security alarm system
- Dishwasher
- Washing/drying machine
- Light wash wood effect flooring
- Modern, white kitchen units

Location

