



SIMPLE LIFE



SIMPLE LIFE



Earle Street, Newton-Le-Willows, WA12

£900 PCM

Welcome to Simple Life's Earle Street. Our homes at Earle Street are set in the western part of Newton-Le-Willows in the area of Earlestown. Historically the Earlestown area owes its existence to the Liverpool and Manchester Railway, which to this day offers its people easy access to city centres. From the development, Earlestown train station is just a 15 minute walk, offering direct services to Liverpool, Chester, Warrington and Manchester. If travelling by car, the M6 is only 4 miles away.

The two double bedroom Alder is a spacious apartment perfect for city living.

With an open plan kitchen/diner attached to a light and airy living room, it is the perfect space for entertaining guests. Benefiting from two bathrooms – one en-suite and another full bathroom suite – the apartment is great for friends sharing or couples who enjoy having a little extra room.

Complete with integrated kitchen appliances, including a washing machine, dishwasher and hob/oven, isn't it time for you to start living the Simple Life?

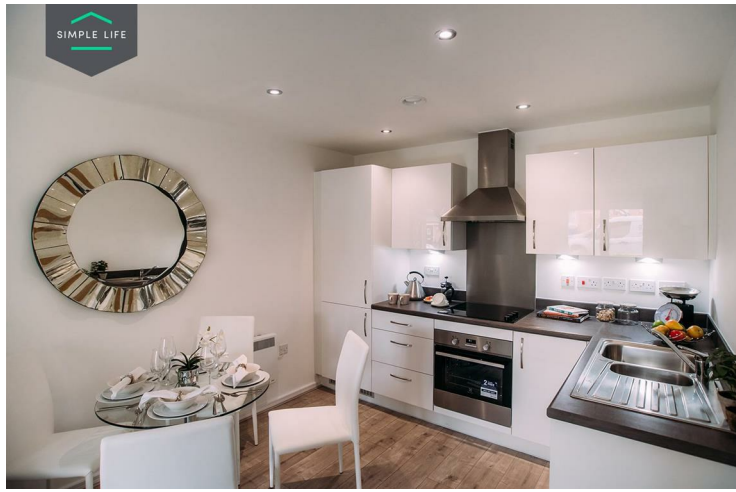
The area has a small, yet busy town centre with an array of good local amenities, including a large Tesco superstore, a medical centre, post office, local market and other popular high street shops, pubs and restaurants. Earlestown is also home to its local favourite, 'curry quarter-of-the-mile', which offers a selection of Indian and Tandoori restaurants.

Sankey Valley Park is situated only 2 miles away from the development – the perfect peaceful setting for an afternoon stroll.

For families, the area holds the key to excellent education (and a wide choice at that!), with 39 primary and secondary schools boasting an 'Outstanding' or 'Good' Ofsted rating, all within a 3 mile radius of our development!

Deposit £1030
Council Tax B
Unfurnished
Available 1st May 2025





Key Features

- Private driveway
- Fitted wardrobes to master bedroom
- Fridge freezer
- Light wash wood effect flooring
- Light wood or white interior doors
- Security alarm system
- Dishwasher
- Washing/drying machine
- Dark ash style worktops

Location

