



Arthur Berry Way, Stoke-on-Trent

£1,050 PCM

Situated in Burslem, Stoke-on-Trent, Stanley Park offers a fantastic new development of 2 & 3 bedroom homes. Stoke City Centre is located less than 3 miles away from Stanley Park, allowing residents to have great access to a range of high street shops and exclusive retailers.

Presenting the Coledale, a stunning home built to welcome you with an open-plan kitchen space as you walk in the front door. You will be greeted with a modern entrance, providing you with a downstairs WC, a storage cupboard and modern appliances fitted within the kitchen. At the rear of the property, there is a beautiful living room space with French windows leading to a private garden.

On the first floor of the property, there are two generous sized bedrooms; one of them supplying a fitted wardrobe for the perfect storage solution. In the stylish bathroom, there is a combined shower and bath with storage above the sink.

You will have countless leisure opportunities, lakes and sports centres as the city of Hanley is based just 2.5 miles away, serving up the perfect location for lots of fun family outings. Not forgetting everyday essentials, there is also Alexandra Park shopping centre within a mile of Stanley Park, including Asda, Aldi and Home Bargains.

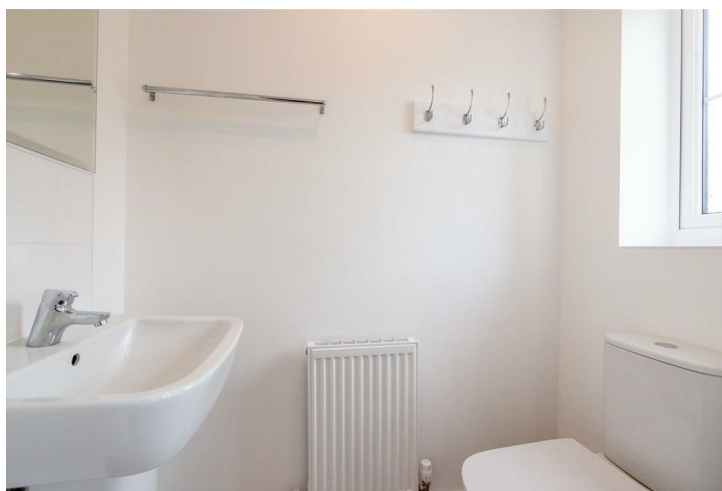
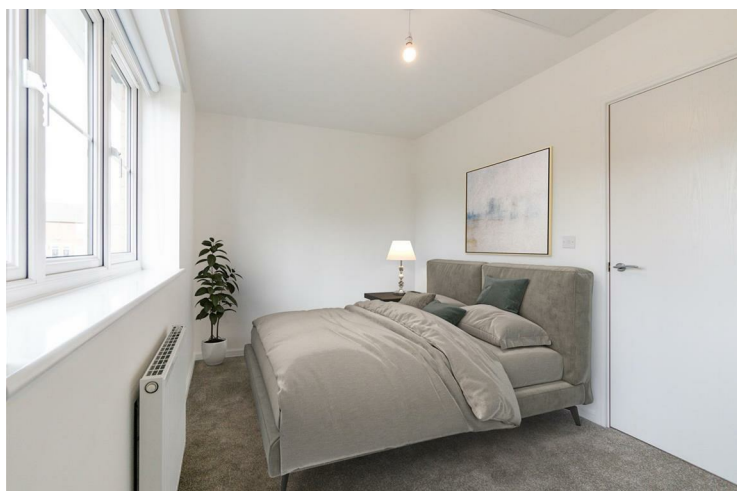
For your convenience, Longport Train Station is approximately a 10 minute walk away making life extremely easy for commuters who want direct access to Stoke, Crewe, Manchester and Derby. Accommodating for drivers, Stanley Park has routes that lead you to a nearby M6 joining road which will take you to the Birmingham Metropolitan area and beyond.

The area is also very well served by both Primary and Secondary schools including St Nathaniel's Academy, North Rd Academy & Fountain Bridge Academy.

To access this site, please use the postcode ST6 3PP

Deposit: £1140
Unfurnished
Council Tax: B
Available 22nd May 2025





Key Features

- Car Parking Space
- Security Alarm
- Fridge-freezer
- Modern kitchen worktops and units
- Private back garden
- Fitted wardrobes to main bedrooms
- Dishwasher
- Washing/drying machine
- Carpets up the stairs and in the bedrooms
- Blinds in the bedrooms

Location

