



SIMPLE LIFE



SUTHERLAND
GRANGE

TRENCH
TF2 7JR



CONTENTS

LOCAL INFORMATION	4
LOCATION MAP	5
SITE MAP	6
PROPERTY INFORMATION	
- IRWELL - 2 BEDROOM HOME	8
- ELLESMERE - 3 BEDROOM HOME	10
- ELLESMERE UP - 3 BEDROOM HOME	12
- GRANTHAM - 3 BEDROOM HOME	14
- WEAVER - 3 BEDROOM HOME	16
- DEE - 4 BEDROOM HOME	18
TESTIMONIALS	20
TENANT FEES	21
COMMUNITY ENGAGEMENT	22
ABOUT US	22
OUR SPEC	23

SUTHERLAND GRANGE

SUTHERLAND GRANGE BENEFITS FROM EASY ACCESS TO TELFORD CENTRE IN THE TOWN OF TRENCH, WITH A GREAT MIX OF WORK AND PLAY OPPORTUNITIES IDEAL FOR ALL THE FAMILY.



LOCATION INFORMATION

Being just 4km away from the 25-acre Southwater shopping centre, residents have the benefit of an ice skating rink, cinema, bowling alley and library, all within one of the largest leisure facilities in the country.

Oakengates train station is also within 2km of the site, making the cities of Shrewsbury, Wolverhampton and Birmingham easily commutable, whilst the M54 provides motorway access linking Trench to the wider region.

For education, Sutherland Grange is spoilt for choice with 26 Good or Outstanding schools within less than 5km from the development, and a Good rated nursery right next door.

This development of 123 properties is enhanced by public open space to the south of the site, as well as additional landscaping and sports pitches at the north, making it a wonderful new community to call home.

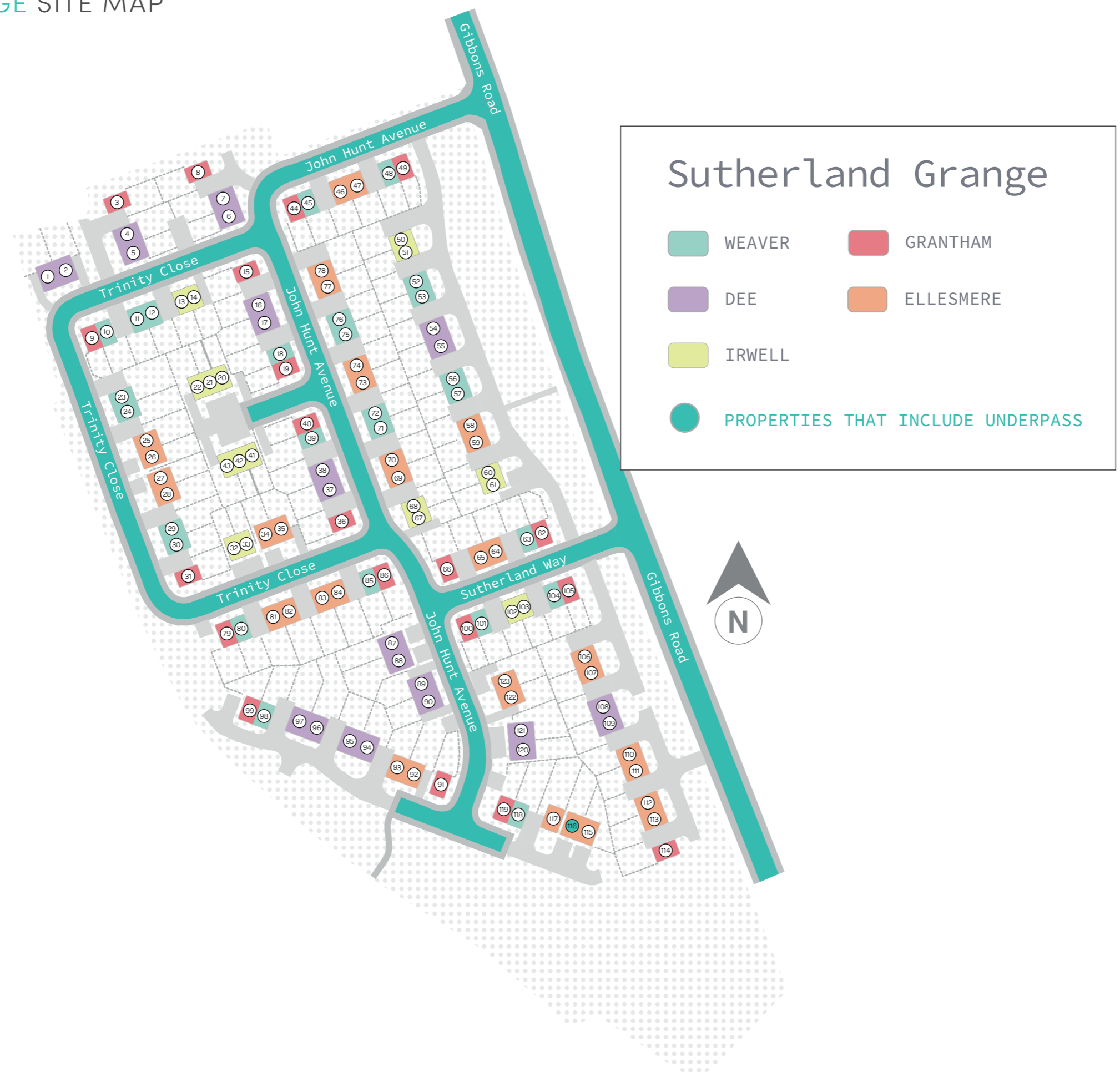
Visit the site using postcode TF2 7JR, along Gibbons Road.



SUTHERLAND GRANGE LOCATION MAP



SUTHERLAND GRANGE SITE MAP



EXCLUSIVELY FOR RENT



Images for demonstrational purposes only. Spec and decor may differ.

IRWELL

2 BEDROOM HOME

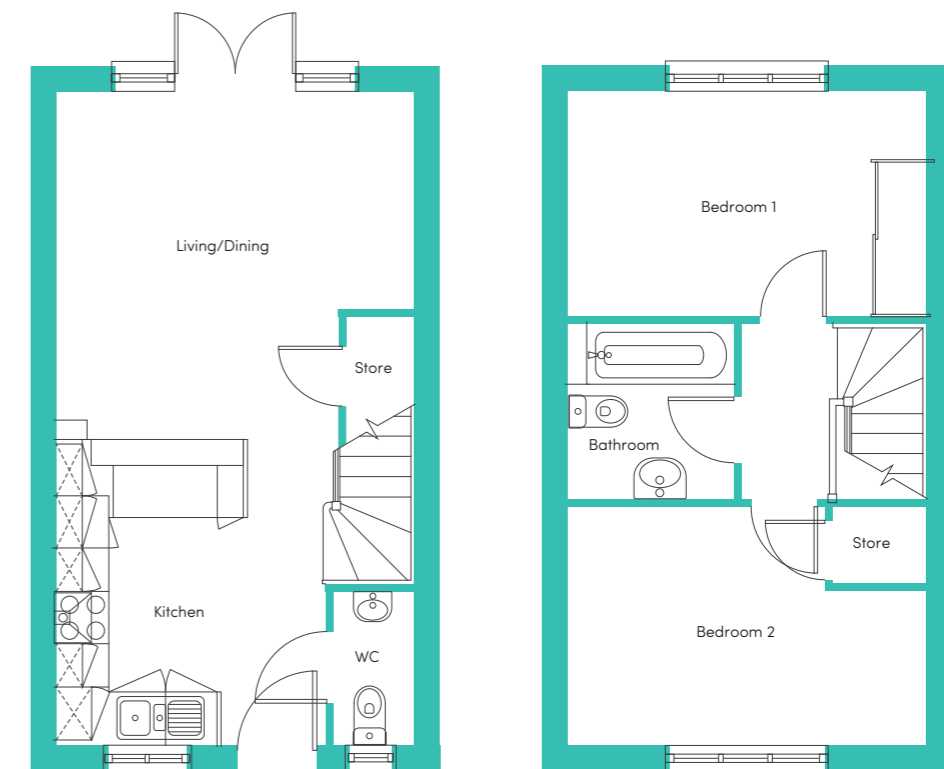
The Irwell is a stunning home built with you in mind.

Entering through the front door you are welcomed by an attractive kitchen with a range of contemporary fitted units and modern integrated appliances. Heading through the hallway will take you into a spacious living/dining area which is finished with beautiful wooden flooring and French windows which open out onto your private rear garden. The lower floor also benefits from a storage cupboard and WC.

Upstairs you will find two spacious double rooms, the master bedroom including a fitted, mirrored wardrobe, whilst the second bedroom benefits from having built in storage space. There is also a main bathroom equipped with a bath and shower.

THE PROPERTY INCLUDES:

- Parking space
- Security alarm system
- Fitted wardrobes to master bedroom
- Dishwasher
- Fridge freezer
- Washing/drying machine
- Oven and hob
- Light wash wood effect flooring
- Dark worktops
- Modern, white kitchen units
- Light wood or white interior doors
- Light grey carpets in the bedrooms and up the stairs
- Outside taps for watering the garden
- Patio area in the private back garden



IRWELL 2 BEDROOM HOME

GROUND FLOOR

Kitchen
3.10 x 3.66m (10'2" x 12'0")

Living/Dining
4.10 x 3.83m (13'6" x 12'7")†

FIRST FLOOR

Bedroom 1
4.10 x 2.60m (13'6" x 8'6")

Bedroom 2
4.10 x 2.73m (13'6" x 9'0")†

Bathroom
1.92 x 2.02m (6'4" x 6'8")

EXCLUSIVELY FOR RENT



Images for demonstrational purposes only. Spec and decor may differ.

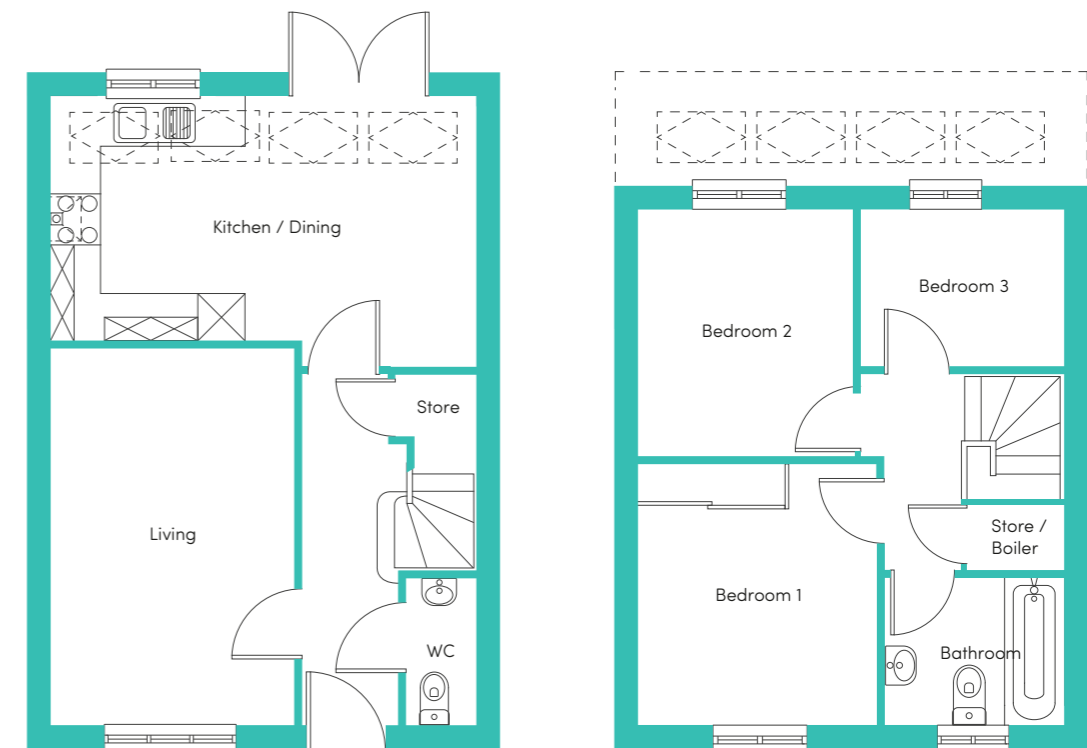
ELLESMERE 3 BEDROOM HOME

The Ellesmere is a stunning home built with your needs in mind. Downstairs, there is a generous living room, hallway and WC. The rear of the property has a magnificent living/kitchen area with a range of contemporary fitted units with integrated appliances. The room has French windows opening onto and overlooking the rear garden as well as a series of skylights which flood the room with light – an ideal space for both family time and entertaining.

Upstairs there is a spacious family bathroom complete with a bath and shower, a master bedroom with fitted, mirrored wardrobes and two further well-proportioned bedrooms. At the top of the stairs you will also find a handy store cupboard.

THE PROPERTY INCLUDES:

- Parking space
- Security alarm system
- Fitted wardrobes to master bedroom
- Dishwasher
- Fridge freezer
- Washing/drying machine
- Oven and hob
- Light wash wood effect flooring
- Dark worktops
- Modern, white kitchen units
- Light wood or white interior doors
- Light grey carpets in the bedrooms and stairs
- Outside taps for watering the garden
- Patio area in the private back garden



ELLESMERE 3 BEDROOM HOME

GROUND FLOOR

Kitchen/Dining
5.42 x 3.45m (17'10" x 11'4")†

Living
3.09 x 4.83m (10'2" x 15'11")

FIRST FLOOR

Bedroom 1
3.04 x 3.36m (10'0" x 11'0")

Bedroom 2
2.74 x 3.16m (9'0" x 10'5")

Bedroom 3
2.61 x 2.00m (8'7" x 6'7")

Bathroom
2.31 x 1.92m (7'7" x 6'4")

EXCLUSIVELY FOR RENT



Images for demonstrational purposes only. Spec and decor may differ.

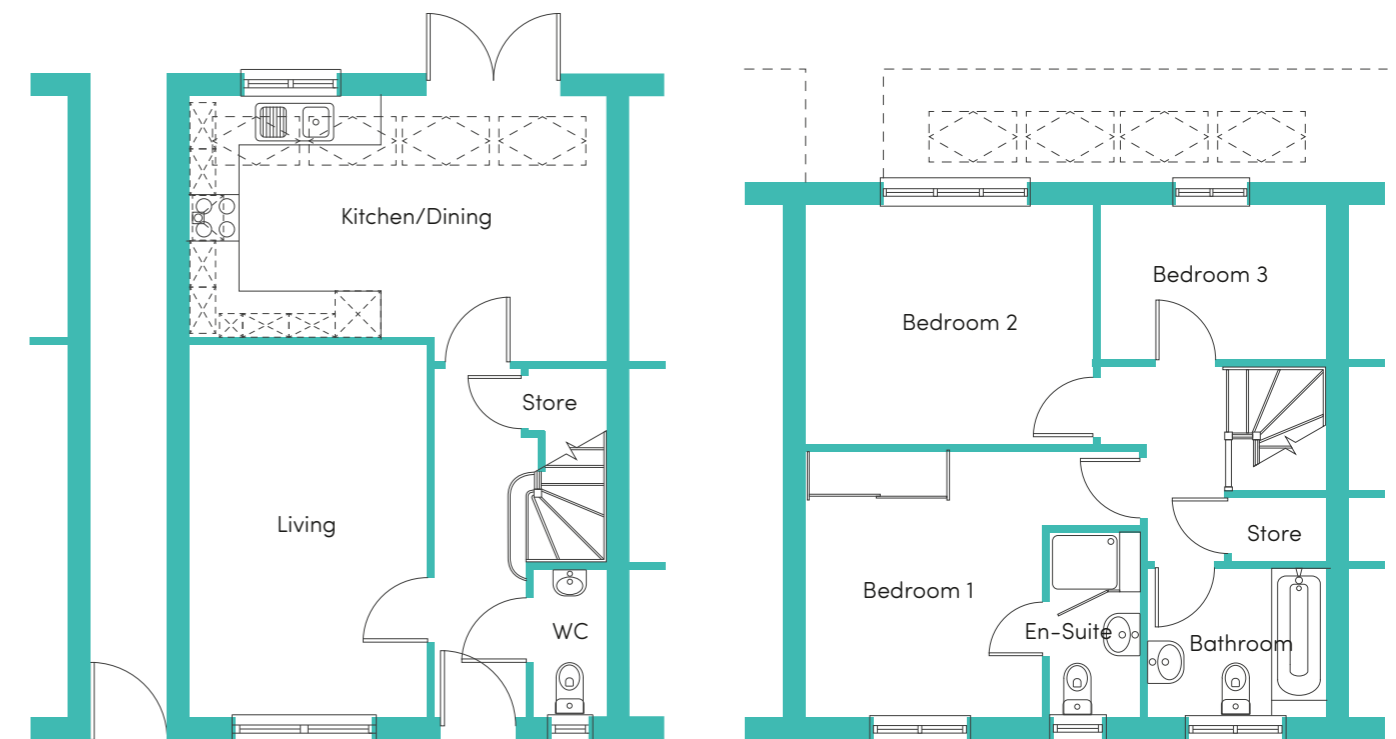
ELLESMERE UP 3 BEDROOM HOME

The Ellesmere UP is a stunning home built with your needs in mind. Downstairs there is a generous living room, hallway and WC. The rear of the property has a magnificent living/kitchen area with a range of contemporary fitted units with integrated appliances. The room has French windows opening onto and overlooking the rear garden as well as a series of skylights which flood the room with light – an ideal space for both family time and entertaining.

Unlike the regular Ellesmere, the Ellesmere UP includes an underpass, which means that there is a little more space upstairs. The first floor has a spacious family bathroom complete with both bath and shower, a master bedroom suite with shower room and fitted, mirrored wardrobes. You will also find two further well-proportioned bedrooms and a handy boiler/store cupboard just off the hallway.

THE PROPERTY INCLUDES:

- Private driveway
- Security alarm system
- Fitted wardrobes to master bedroom
- Dishwasher
- Fridge freezer
- Washing/drying machine
- Oven and hob
- Light wash wood effect flooring
- Dark worktops
- Modern, white kitchen units
- Light wood or white interior doors
- Light grey carpets in the bedrooms and stairs
- Outside taps for watering the garden
- Patio area in the private back garden



ELLESMERE UP 3 BEDROOM HOME

GROUND FLOOR

Kitchen/Dining
5.42 x 3.45m (17'10" x 11'4")†

Living
3.09 x 4.83m (10'2" x 15'11")

FIRST FLOOR

Bedroom 1
3.07 x 3.42m (10'1" x 11'3")

Bedroom 2
3.76 x 3.09m (12'4" x 10'2")

Bedroom 3
2.94 x 2.00m (9'8" x 6'7")

Bathroom
2.33 x 1.92m (7'8" x 6'4")

EXCLUSIVELY FOR RENT



Images for demonstrational purposes only. Spec and decor may differ.

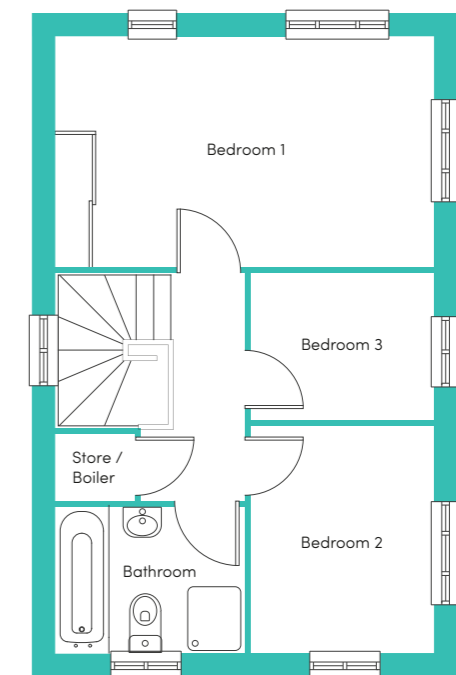
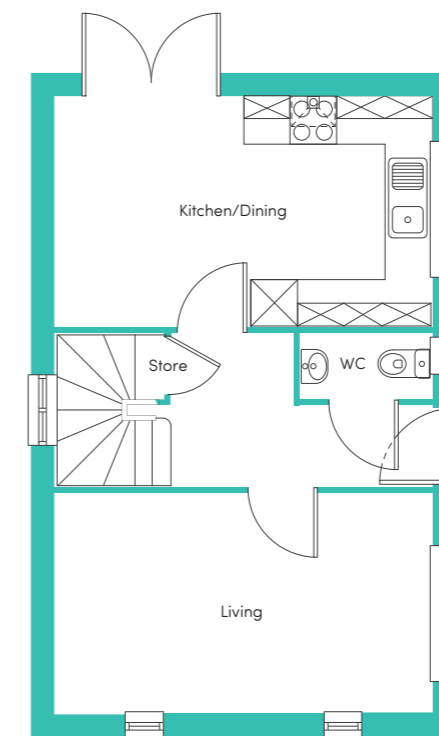
GRANTHAM 3 BEDROOM HOME

The welcoming central hallway of the Grantham sits in between the living room and the kitchen. A house designed with you in mind, the spacious lounge provides the perfect area to relax, whilst the dining/kitchen area provides a great place to spend time and entertain with its French windows opening on to the garden. A WC is conveniently situated off the hallway, completing the downstairs.

Upstairs, the house has a large master bedroom with fitted, mirrored wardrobes, and a further two bedrooms. A stylish family bathroom with a separate bath and shower provides the best of both worlds, whilst a store room on the landing provides a space to store bits and pieces.

THE PROPERTY INCLUDES:

- Parking space
- Security alarm system
- Fitted wardrobes to master bedroom
- Dishwasher
- Fridge freezer
- Washing/drying machine
- Oven and hob
- Light wash wood effect flooring
- Dark worktops
- Modern, white kitchen units
- Light wood or white interior doors
- Light grey carpets in the bedrooms and stairs
- Outside taps for watering the garden
- Patio area in the private back garden



GRANTHAM 3 BEDROOM HOME

GROUND FLOOR

Kitchen/Dining
4.92 x 2.98m (16'2" x 9'10")

Living
4.92 x 2.88m (16'2" x 9'6")

FIRST FLOOR

Bedroom 1
4.92 x 2.98m (16'2" x 9'9")

Bedroom 2
2.40 x 3.02m (7'10" x 9'11")

Bedroom 3
2.40 x 1.90m (7'10" x 6'3")

Bathroom
2.46 x 1.98m (8'1" x 6'6")

EXCLUSIVELY FOR RENT



Images for demonstrational purposes only. Spec and decor may differ.

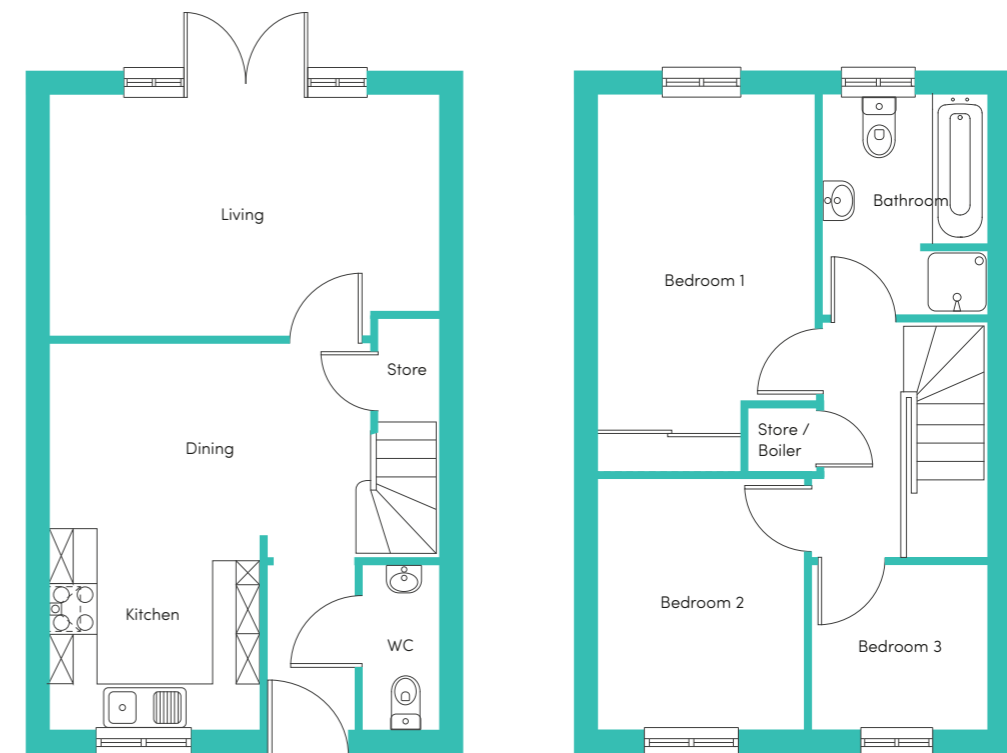
WEAVER 3 BEDROOM HOME

The Weaver is a beautifully designed, modern 3 bedroom family home. The downstairs offers an open plan kitchen/dining area with a range of contemporary fitted cabinets with integrated appliances. To the rear of the house the living room has a set of French windows which overlook and open onto the back garden, creating a light and spacious environment.

Upstairs there is a generously proportioned master bedroom with fitted, mirrored wardrobes. Additionally there are two further bedrooms to the front of the house as well as a family bathroom, offering great space for young couples and families alike.

THE PROPERTY INCLUDES:

- Parking space
- Security alarm system
- Fitted wardrobes to master bedroom
- Dishwasher
- Fridge freezer
- Washing/drying machine
- Oven and hob
- Light wash wood effect flooring
- Dark worktops
- Modern, white kitchen units
- Light wood or white interior doors
- Light grey carpets in the bedrooms and stairs
- Outside taps for watering the garden
- Patio area in the private back garden



WEAVER 3 BEDROOM HOME

GROUND FLOOR

Kitchen/Dining
4.04 x 4.89m (13'3" x 16'1")†

Living
4.92 x 3.08m (16'2" x 10'2")†

FIRST FLOOR

Bedroom 1
2.80 x 4.79m (9'2" x 15'9")†

Bedroom 2
2.64 x 3.19m (8'8" x 10'6")

Bedroom 3
2.22 x 2.09m (7'3" x 6'10")

Bathroom
2.05 x 2.82m (6'9" x 9'3")

EXCLUSIVELY FOR RENT



Images for demonstrational purposes only. Spec and decor may differ.

DEE 4 BEDROOM HOME

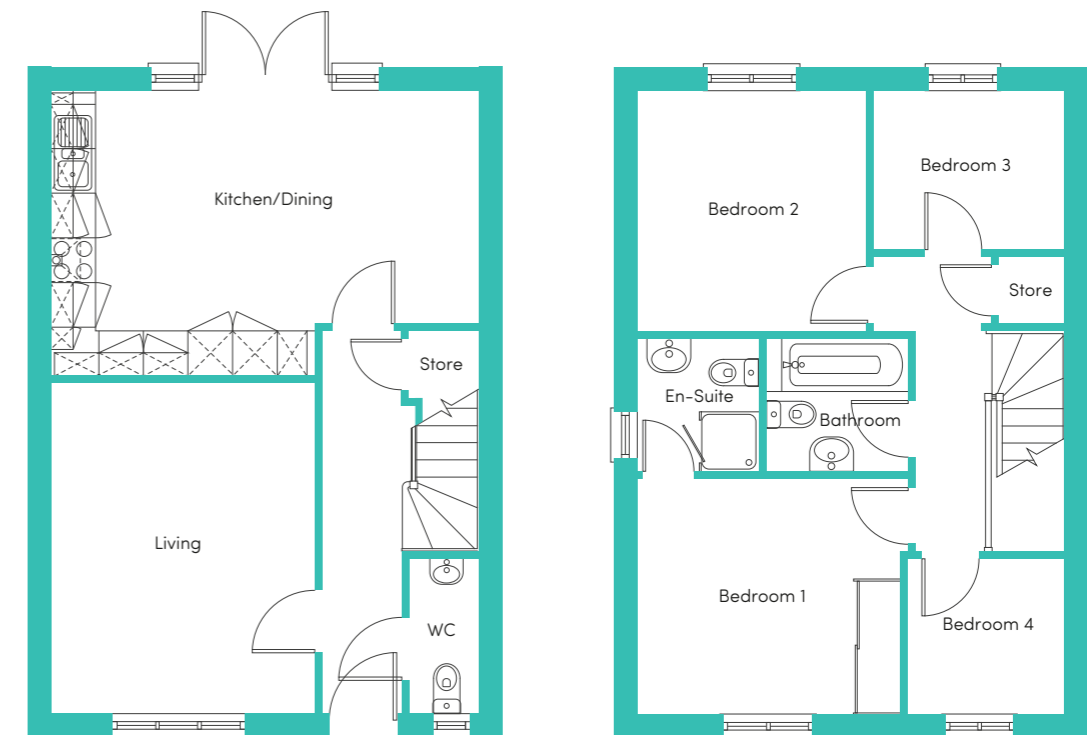
The Dee is a beautiful four bedroom modern home, built over two levels.

Downstairs there is a large living room, WC and hallway leading to the rear of the property where you will find a stunning kitchen/dining area equipped with integrated kitchen appliances and contemporary units. The kitchen/dining area also benefits from French windows which take you into your own private rear garden.

Upstairs you will find a family sized bathroom including a stylish white bathroom suite and four bedrooms – two doubles and two singles. The master bedroom benefits from built-in wardrobes and an en-suite bathroom fitted with its own shower and cubicle.

THE PROPERTY INCLUDES:

- Parking space
- Security alarm system
- Fitted wardrobes to master bedroom
- Dishwasher
- Fridge freezer
- Washing/drying machine
- Oven and hob
- Light wash wood effect flooring
- Dark worktops
- Modern, white kitchen units
- Light wood or white interior doors
- Light grey carpets in the bedrooms and up the stairs
- Outside taps for watering the garden
- Patio area in the private back garden



DEE 4 BEDROOM HOME

GROUND FLOOR

Kitchen/Dining
5.91 x 3.85m (19'5" x 12'8")†

Living
3.53 x 4.42m (11'7" x 14'6")

FIRST FLOOR

Bedroom 1
3.21 x 3.15m (10'6" x 10'4")

Bedroom 2
3.10 x 3.25m (10'2" x 10'8")

Bedroom 3
2.73 x 2.14m (9'0" x 7'1")

Bedroom 4
2.63 x 2.08m (8'8" x 6'10")

Bathroom
1.82 x 1.93m (6'0" x 6'4")

These measurements may vary slightly by plot. The external elevations, architectural detailing and floor plans of individual house types may vary from those illustrated. All room sizes are approximate with maximum dimensions. While every effort has been made to ensure that the information contained in this leaflet is correct, it is designed specifically as a guide and we reserve the right to amend the specifications as necessary and without notice. These particulars do not wholly or in part constitute a contract or agreement and are for general guidance only. † Denotes longest measurement taken.

TESTIMONIALS

“

“I love my home now, it ticks all the boxes and it’s perfect for me. I feel like a lot of thought has gone into the layout and spec of the house and a lot of care has gone into the way it looks. It’s simple, but tastefully decorated, and the appliances are great.”

Louise Holleran,
Simple Life customer

“Compared to a private landlord, Simple Life is far better. We feel much happier and confident that someone is there to help should we ever need it. With previous landlords, we’d been fobbed off a lot and things were never fixed, but Simple Life really want to help. There’s also no fear that the house will be sold. We have a 12-month lease which gives us peace of mind.”

Jeanie Logan,
Simple Life customer

”



Jeanie Logan

TENANT FEES

Permitted Payments under a Simple Life Assured Shorthold

In addition to your Rent, you may be expected to pay any or all of the below before, during, and after your tenancy in line with your Assured Shorthold Tenancy agreement and government legislation:

Fee Type	Details	Date Payable	Amount
Refundable Holding Deposit	A holding deposit will be required in order to secure the property. By paying this holding deposit you give your consent for this said holding deposit to be held on account until your first month’s rent becomes due. (Typically within 90 days). The holding deposit will be paid towards your first month’s rent.	The holding deposit will be collected by Simple Life as soon as you have completed the referencing application form at which point the property will be removed from the market.	Equivalent to one week’s rent rounded down to the nearest £10. e.g if your rent is £750 pcm then the holding deposit will be £170.
Simple Life may retain your holding deposit if: <ul style="list-style-type: none"> You provide misleading information on your application form You fail a Right to Rent Check You change your mind about the property and withdraw your application You have failed to take reasonable steps to enter into the tenancy 			
Refundable Tenancy Deposit	This is your Security Deposit. Your Deposit will be registered with the Deposit Protection Service for the duration of your Tenancy.	The Simple Life Team will contact you to advise when all payments are required.	Equivalent to 5 week’s rent.
First Month’s Rent	Your first month’s rent is due in advance.	The Simple Life Team will contact you to advise when all payments are required.	1 month’s rent (less any holding deposit that has been collected).

Tenants may also be charged the following fees for services provided during the tenancy:

Fee Type	Details	Date Payable	Amount
Default Fee	A payment that is required in the event of a default by the tenant: <ul style="list-style-type: none"> Lost key Lost security device giving access to the housing. 	Payable on request by the Simple Life Team.	A reasonable cost that has been incurred by the Landlord.
Late Payment Fee	Fee will be added to the Tenant’s account when rent falls overdue (by 14 days or more).	Payable when rent falls overdue.	Any fee charged must be no more than 3% above the Bank of England Base Rate (this is only applicable to the late payment fee not a Default Fee).
Variation of Tenancy Fee	Payments on assignment, variation or novation of a tenancy at the tenant’s request.	Payable on request by the Simple Life Team following the tenant request.	Capped at £50 or the reasonable costs incurred if greater.
Early Termination Fee	Payments in respect of early termination of a tenancy agreement at the tenant’s request.	Payable on request by the Simple Life Team following the tenant request.	Capped at Simple Life’s loss of rent.

Any payment is inclusive of VAT. Unless stated otherwise, all payments are non-refundable.

Tenants may be expected to pay additional amounts for services incurred during your tenancy such as:

Council Tax, Energy and Utilities, Television Licences, Phone and Internet services.

These are not included with your rent or payments to Simple Life. It is the responsibility of the tenant to arrange for payment for these services where applicable.

Criteria for Application

All applications are based on minimum household affordability of 30 x the monthly rent payment. If the applicant has historic or current credit issues such as CCJ’s, IVA’s, Bankruptcy then these must be disclosed to the letting agent before a holding deposit is paid so they can establish whether you are likely to be accepted for tenancy.

All applicants are referenced through Let Alliance against a criteria agreed with the Landlord and will include proof of identification, proof of residence, credit check, Right to Rent check and proof of income, passing a reference does not constitute acceptance for tenancy and the Landlord can decline an applicant without reason. All offers to tenancy are made Subject to Contract.

Accurate as of May 2020

COMMUNITIES

A house is not just a home, but also where you put down roots and establish yourself in a community of neighbours and friends. At Simple Life we feel it is just as important to have a sense of place within your street as it is to enjoy your internal space. As such, we help to organise community events throughout the year across our developments, bringing the neighbourhood together.

From Easter Egg Hunts to funding support for local schools, Simple Life aims to enhance and expand engagement projects and establish each new development as a hub for residents to **Settle for More**.

ABOUT US

Simple Life customers are offered the remarkable opportunity to rent a brand new quality home from a professional and reliable landlord. We take pride in our homes and the communities we create, so we ensure that your home is kept in excellent working order and to high standards throughout the duration of your tenancy.

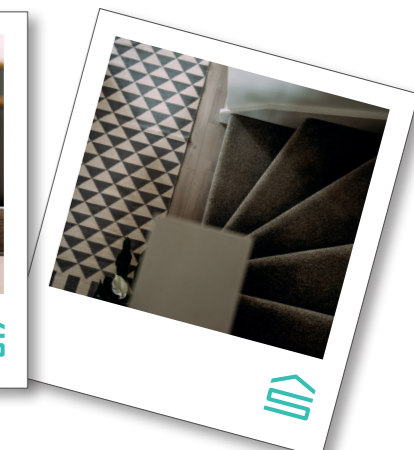
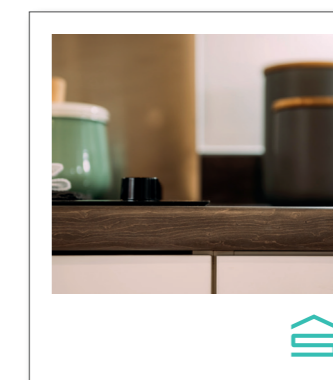
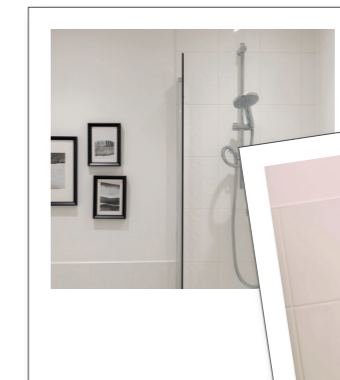
When it comes to quality affordable rental properties, we recognise that many private landlords may struggle to offer the level of service that you deserve as a tenant, and we want to change that!

From cleverly integrated appliances to cosy carpets, we've thought of every little detail in your Simple Life home. And because our neighbourhoods are designed to add character and complement their surroundings perfectly, we build properties in both render and brick to create a harmonious mix – so your home will be as individual as you are.

Being part of the Simple Life family means you'll soon be living in the heart of a friendly and like-minded community, with everything you need right on your doorstep. So you'll find handy transport links nearby, and great schools, shops and amenities just minutes away.

With over 1000 properties now built across the UK, Simple Life will make you feel right at home, wherever that may be.

OUR SPEC





E: lettings@simplelifelifehomes.co.uk

T: 0345 686 6513

www.simplelifelifehomes.co.uk