



SIMPLE LIFE



SIMPLE LIFE

First
month's
rent free!!

*Offer available on selected
plots and for a limited
time only

Sutherland Grange, Telford, TF2

£1,150 PCM

FIRST MONTH'S RENT FREE!*

Sutherland Grange benefits from easy access to Telford Centre in the town of Trench, with a great mix of work and play opportunities ideal for all the family

The Ellesmere is a stunning home built with your needs in mind. Downstairs, there is a generous living room, hallway and WC. The rear of the property has a magnificent living/kitchen area with a range of contemporary fitted units with integrated appliances. The room has French windows opening onto and overlooking the rear garden as well as a series of skylights which flood the room with light – an ideal space for both family time and entertaining.

Upstairs there is a spacious family bathroom complete with a bath and shower, a master bedroom with fitted, mirrored wardrobes and two further well-proportioned bedrooms. At the top of the stairs you will also find a handy store cupboard.

Just 4km away from the 25-acre Southwater shopping centre, residents have the benefit of an ice skating rink, cinema, bowling alley and library, all within one of the largest leisure facilities in the country.

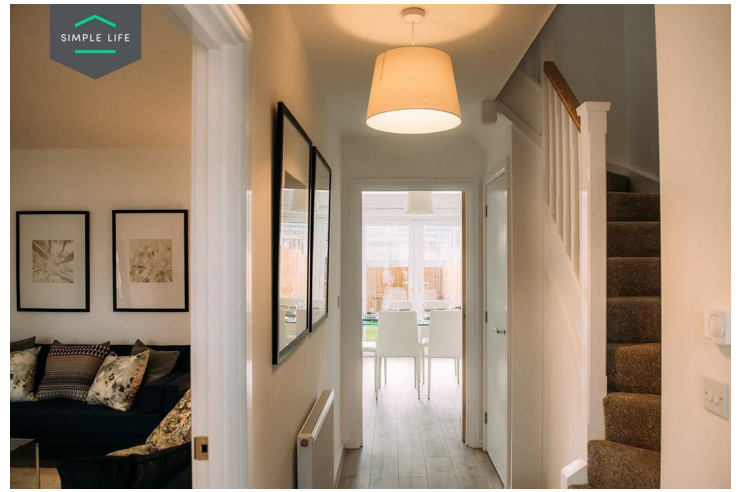
Being less than 2km from Oakengates train station, the cities of Shrewsbury, Wolverhampton and Birmingham are easily commutable, whilst the M54 provides motorway access linking Trench to the wider region.

Visit the site using postcode TF2 7JR, along Gibbons Road.

Deposit: £1,320
Tenancy Length: 12 Months
Council tax band: C
Available Now

*Available on selected plots only. See T&Cs attached. Offer ends 15th July 2024.





Key Features

- FIRST MONTH'S RENT FREE!*
- Fitted wardrobes to master bedroom
- Fridge freezer
- Oven and hob
- Dark ash style worktops
- Security alarm system
- Dishwasher
- Washing/drying machine
- Light wash wood effect flooring
- Modern, white kitchen units

Location

