

SIMPLE LIFE

SIMPLE LIFE



Empyrean, Salford, M7

£995 PCM

A Striking new development of apartments in Salford, just a 20 minute walk from Manchester's Deansgate. Inspired by astronomer William Crabtree who made the area his home in the 1600s, Empyrean translates as the highest heaven – and you can call a slice of it your own!

The Crabtree is a beautiful one bed apartment named after William Crabtree, the 17th century astronomer born and bred in Salford.

As you walk in the front door, you are met with a large kitchen/ diner fully fitted with appliances as well as handy store cupboard for extra space. This area leads you into the living room towards the back of the apartment. Featuring French windows that open onto your balcony, this is the perfect haven for lazy afternoons and sunsets. Ground floor apartments will include a Juliet balcony for extra security, whilst the upper floors benefit from larger outdoor spaces. Off the living room, you will find your bedroom with access to a stylish shower room.

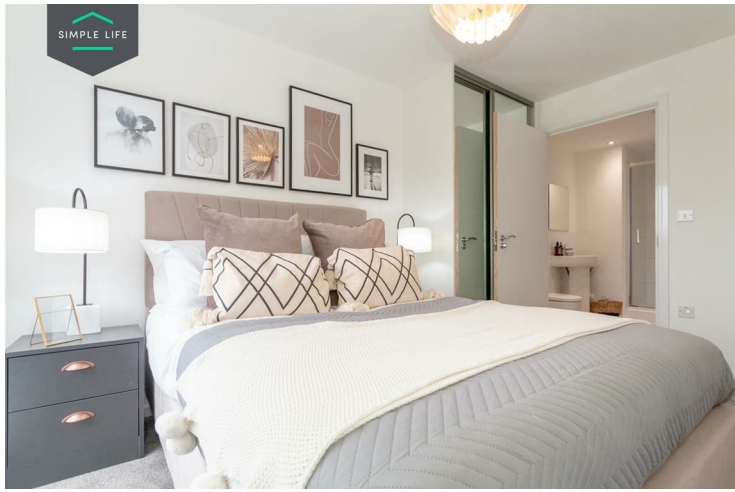
With 298 apartments spread across six blocks either side of the newly renovated Church of Ascension, we have a range of 1, 2 and 3 bedroom properties available including those designed specifically for people sharing. Situated directly opposite Green Grosvenor Park and a stone's throw away from the river Inwell, these homes have something to offer to all.

At Empyrean, you get the best of both worlds from the privacy of your own space to the bustling heart of the city. Our expertise is in professionally managed, high quality homes, and that's what we offer you. For the best choice of gyms, bars, restaurants and shops, why compete with everything Manchester has on your doorstep!

With easy access to the city, as well as the wider connections beyond Salford, Empyrean puts you in the ideal spot to reap the benefits of an urban lifestyle from the sanctuary of your Simple Life home.

Deposit: £1,260
Tenancy Length: 12 Months
Council Tax Band: A
Available 25th June





Key Features

- Fitted wardrobes to main bedroom
- Fridge freezer
- Oven and hob
- Dark ash style worktops
- Light wood or white interior doors
- Dishwasher
- Washing/drying machine
- Light wash wood effect flooring
- Modern, white kitchen units
- Light grey carpets in the bedrooms

Location

