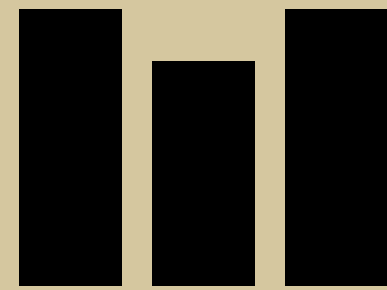


TENNANT STREET LOFTS



TENNANT ST  
BIRMINGHAM  
B15 1EL





T

AN EXCLUSIVE DEVELOPMENT  
OF 40 LUXURY APARTMENTS SET  
IN THE HEART OF BIRMINGHAM.







- MAIN ENTRANCE -





- BALCONY -





IF YOU'RE IN THE MARKET FOR YOUR VERY OWN PIECE OF EXTRAORDINARY, **TENNANT STREET LOFTS** ARE EXACTLY WHERE YOU WANT TO BE.



**T T**  
**T T**



- KITCHEN/LIVING -

- BEDROOM/BATHROOM -



T

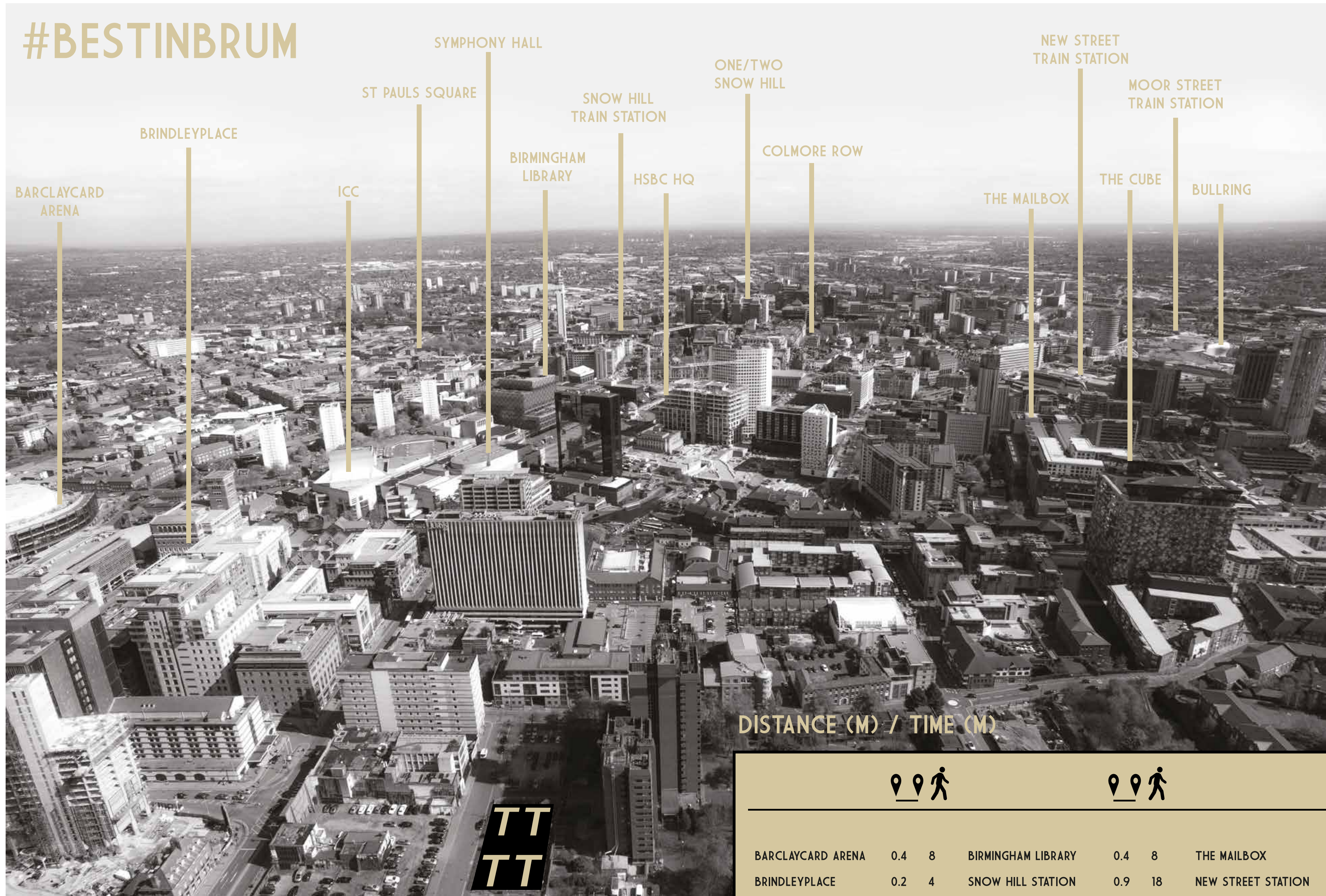
BIRMINGHAM. A SECRET ONLY 1.1 MILLION PEOPLE ARE IN ON. BRITAIN'S SECOND CITY BUT, RIGHT NOW, IT'S MOST COMPELLING. LAST YEAR 6000 YOUNG PROFESSIONALS TURNED THEIR BACK ON LONDON TO RELOCATE TO BRUM, MORE THAN ANY OTHER CITY IN THE UK.

#BESTINBRUM





# #BESTINBRUM

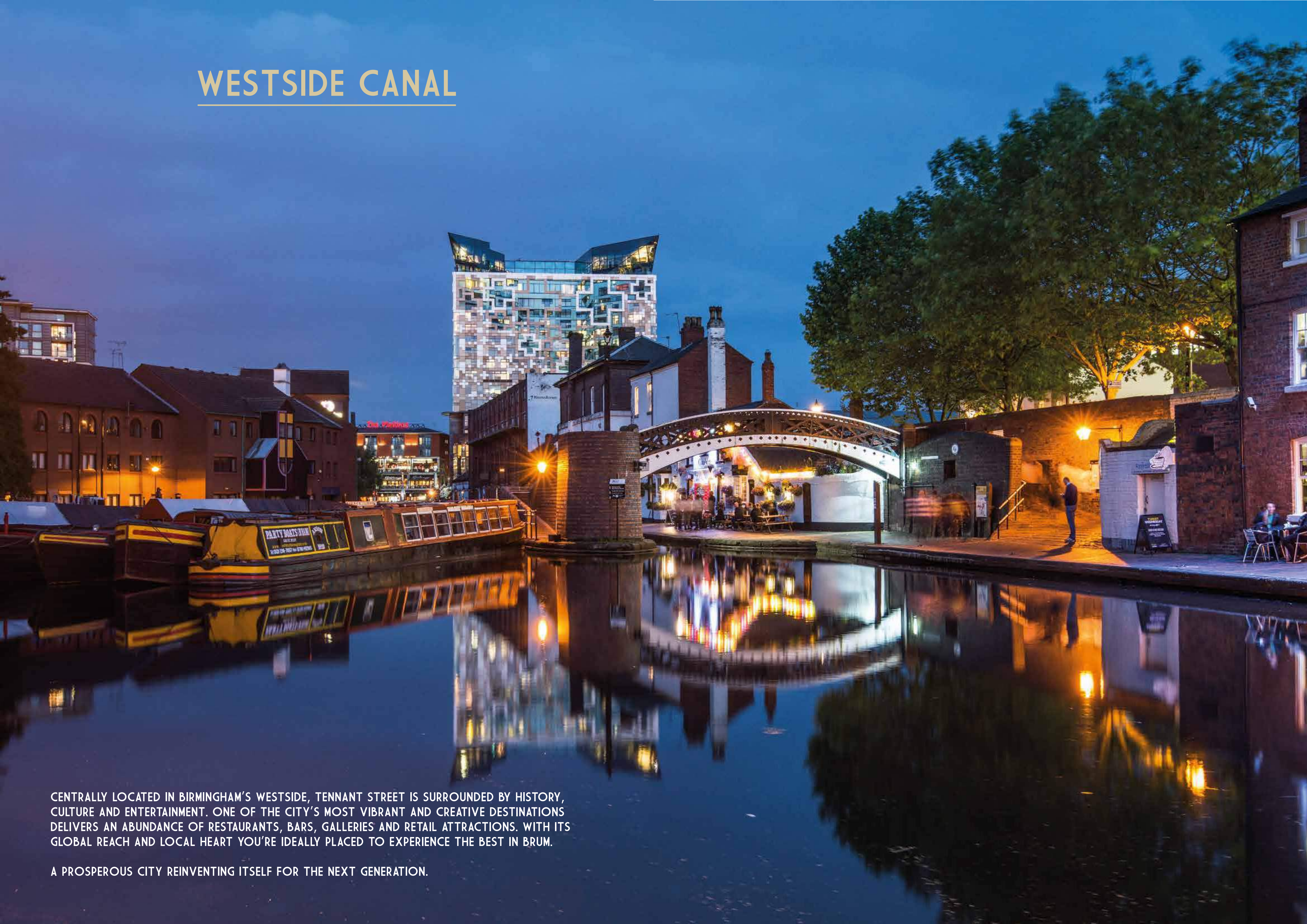


DISTANCE (M) / TIME (M)

	📍📍🚶		📍📍🚶		📍📍🚶			
BARCLAYCARD ARENA	0.4	8	BIRMINGHAM LIBRARY	0.4	8	THE MAILBOX	0.4	8
BRINDLEYPLACE	0.2	4	SNOW HILL STATION	0.9	18	NEW STREET STATION	0.7	14
ICC	0.3	6	HSBC HQ	0.4	8	THE CUBE	0.3	6
ST PAULS SQUARE	1.0	19	ONE/TWO SNOW HILL	1.0	20	MOOR STREET STATION	1.0	20
SYMPHONY HALL	0.3	6	COLMORE ROW	0.8	15	BULLRING	0.9	18



# WESTSIDE CANAL



CENTRALLY LOCATED IN BIRMINGHAM'S WESTSIDE, TENNANT STREET IS SURROUNDED BY HISTORY, CULTURE AND ENTERTAINMENT. ONE OF THE CITY'S MOST VIBRANT AND CREATIVE DESTINATIONS DELIVERS AN ABUNDANCE OF RESTAURANTS, BARS, GALLERIES AND RETAIL ATTRACTIONS. WITH ITS GLOBAL REACH AND LOCAL HEART YOU'RE IDEALLY PLACED TO EXPERIENCE THE BEST IN BRUM.

A PROSPEROUS CITY REINVENTING ITSELF FOR THE NEXT GENERATION.





## CHINA TOWN

唐人街

MOMENTS FROM NEW STREET STATION AND YET COMPLETELY DISTINCT, THE MARKETS, NOODLE BARS AND THEATRES MEAN THAT THIS DEFIANTLY ROUGH ROUND THE EDGES CORNER OF THE CITY IS HAPPILY BUSY ALL DAY AND FOR A LOT OF THE NIGHT. OTORO SUSHI IS PRECISELY THE SORT OF PLACE YOU'LL WANT TO START.





## BRINDLEYPLACE



THIS IMMACULATE CANALSIDE REGENERATION IS HOME TO A RAFT OF BARS AND PUBS WITH WATERWAY VIEWS AND A GORGEOUS FOUNTAIN FOCAL-POINT. BANKING GIANTS, DEUTSCHE BANK ARE LUCKY ENOUGH TO BE SITUATED OPPOSITE FRISKA, PRODUCERS OF A SERIOUSLY COVETABLE LUNCH TIME OFFERING, WHILE YOUR EVENING DINING IS TAKEN CARE OF BY METICULOUS BUENOS AIRES-INSPIRED STEAKHOUSE CAU.



# 200 DEGRESS

AS CENTRAL AS IT GETS, 200 DEGREES HAS A STRIPPED BACK, WELCOMING FEEL. GET COFFEE TO GO, USE THE TEAM'S WIFI FOR LARGE PARTS OF THE DAY, OR BECOME A BARISTA CHAMP IN THE ATTACHED COFFEE SCHOOL.



# IKON GALLERY

BIG TICKET CONTEMPORARY INSTALLATIONS COME AS STANDARD AT THIS FORWARD THINKING YET ACCESSIBLE GALLERY. BE SURE TO TAKE THE LIFT AT SOME POINT IN YOUR VISIT, FOR WHICH ENTRY IS ENTIRELY FREE.







## ADAMS

BEDECKED IN ROSETTES AND A STAR OF THE MICHELIN VARIETY FOR GOOD REASON, IT'S ALL ABOUT THE CHEF'S TABLE FOR THOSE ACHINGLY SPECIAL OCCASIONS. RESERVATIONS ARE ACCEPTED UP TO THREE MONTHS IN ADVANCE.



## LIQUOR STORE

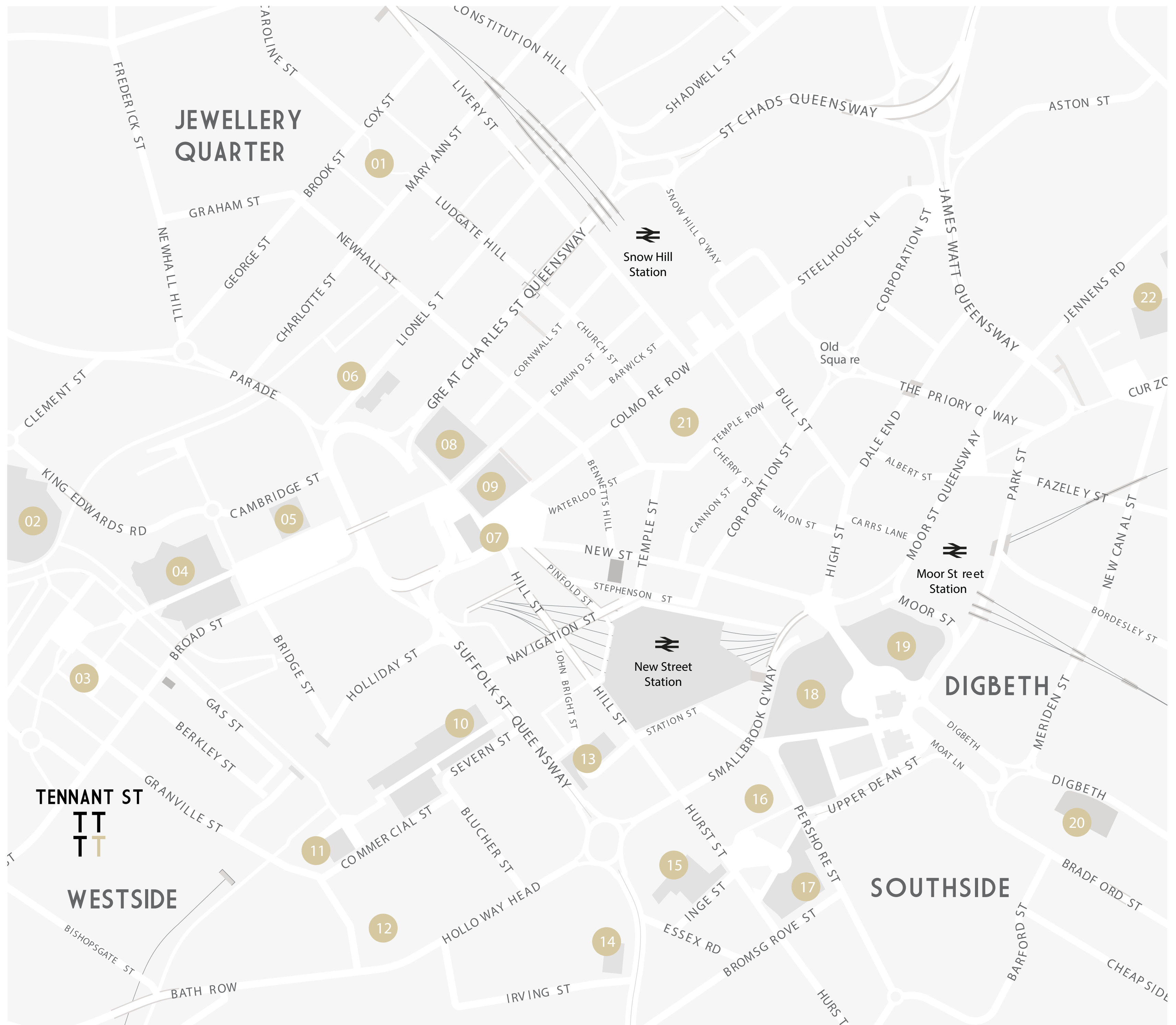
THIS INDEPENDENT CLOTHING FAVOURITE IS DOING STERLING TRADE BENEATH BIRMINGHAM'S MOST BEAUTIFUL HOTEL, THE GRAND. EXPECT A SUPERB DENIM SELECTION FROM THE LIQUOR STORE BUT MUCH MUCH MORE THAN THAT WHEN YOU GO DOWNSTAIRS AND PULL ON ONE SPECIFIC COAT HOOK. DID SOMEBODY SAY SPEAKEASY?





# WESTSIDE AND BEYOND.

01. St Pauls Square
02. The NIA
03. Brindleyplace
04. ICC & Symphony Hall
05. Library of Birmingham
06. University College
07. Town Hall
08. Museum & Art Gallery
09. Council House
10. The Mailbox
11. The Cube
12. Peace Gardens
13. New Alexandra Theatre
14. O2 Academy
15. Birmingham Hippodrome
16. Chinatown
17. Arcadian
18. Bullring
19. Selfridges
20. Coach Station
21. Birmingham Cathedral
22. Millennium Point





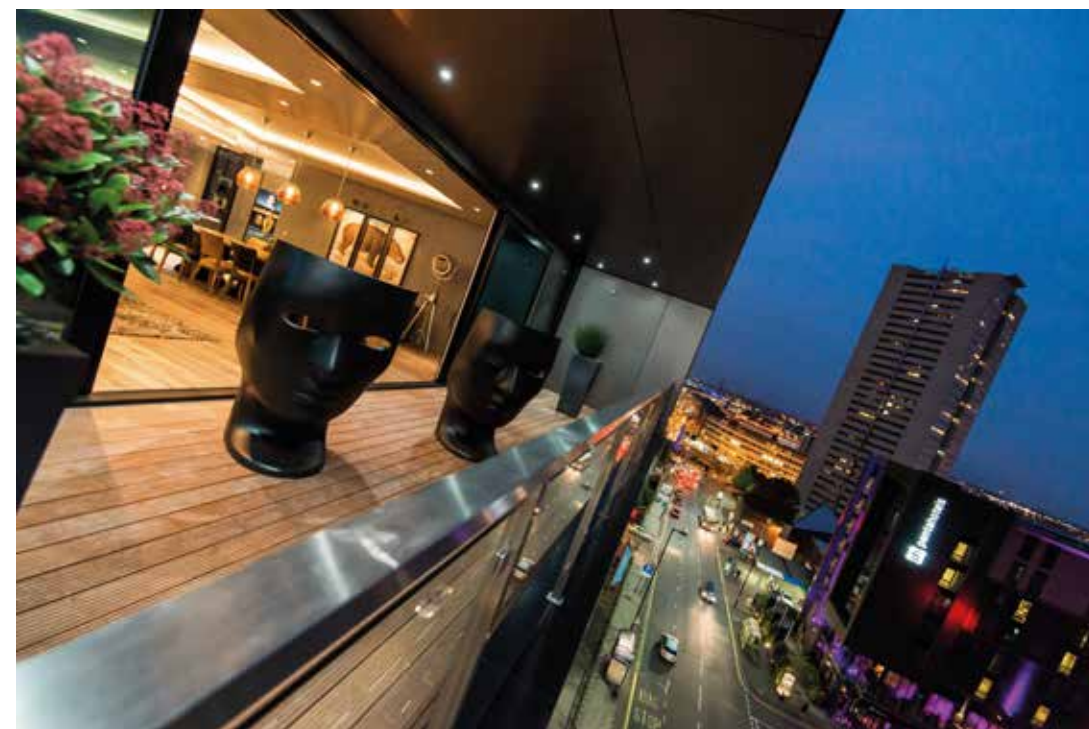
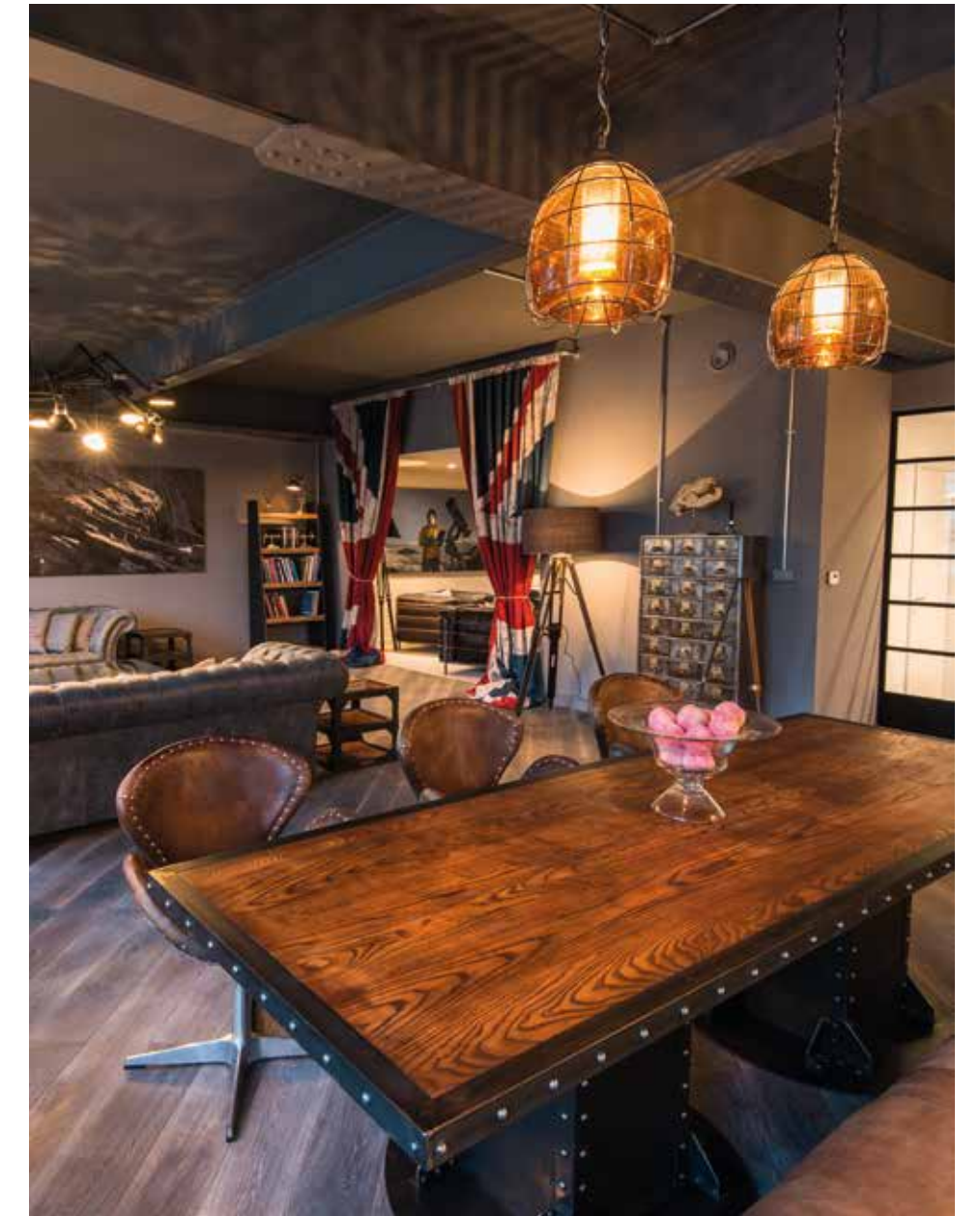
"WE PRIDE OURSELVES ON PROVIDING  
CREATIVE AND UNIQUE HOMES THAT  
MAKE A STATEMENT YET STILL PERFORM  
AS FUNCTIONAL LIVING SPACES."



ELEVATE PROPERTY GROUP

- CONCORD HOUSE -  
2015





**ELEVATE  
INTERIORS**



# SPECIFICATION

---

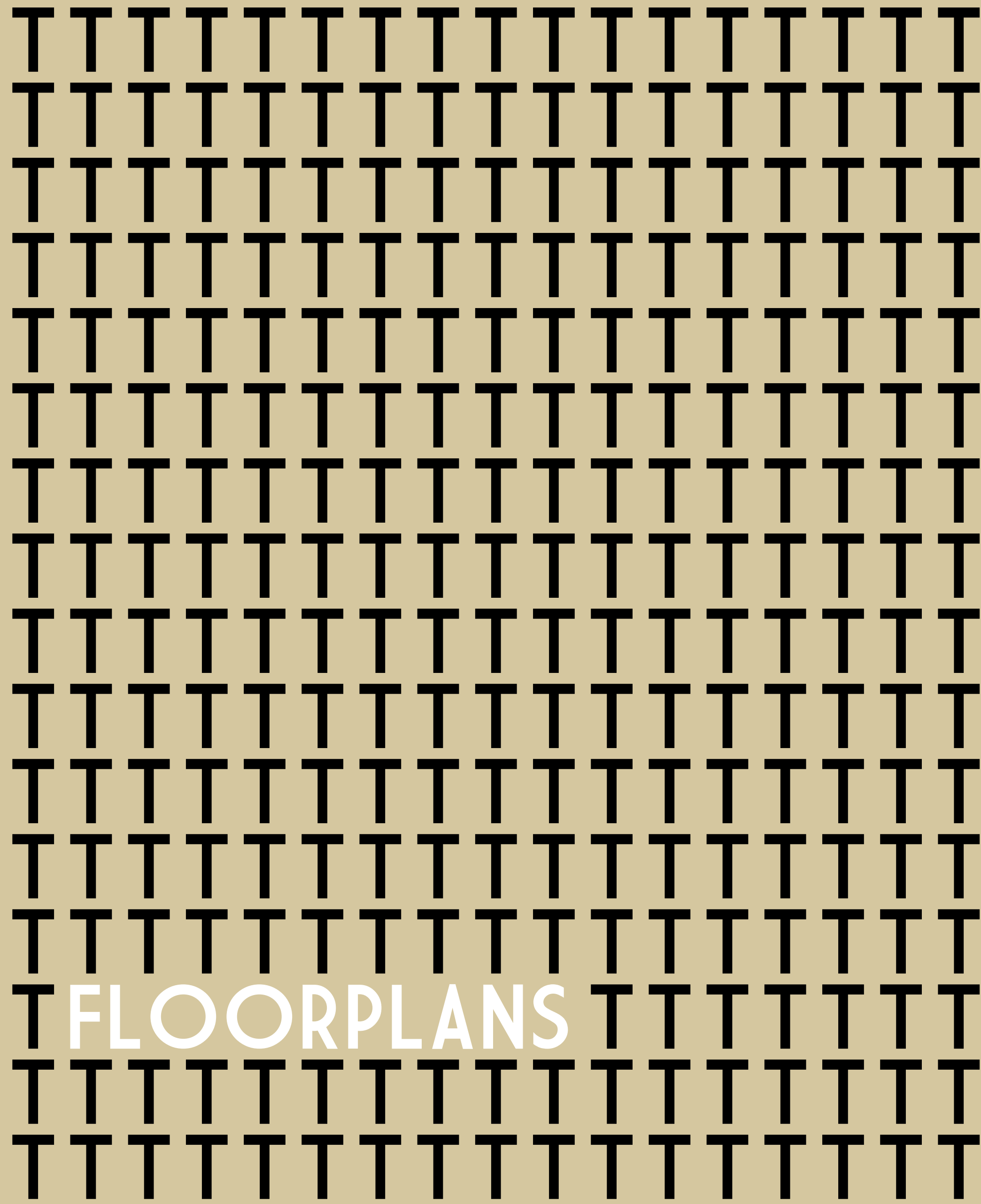
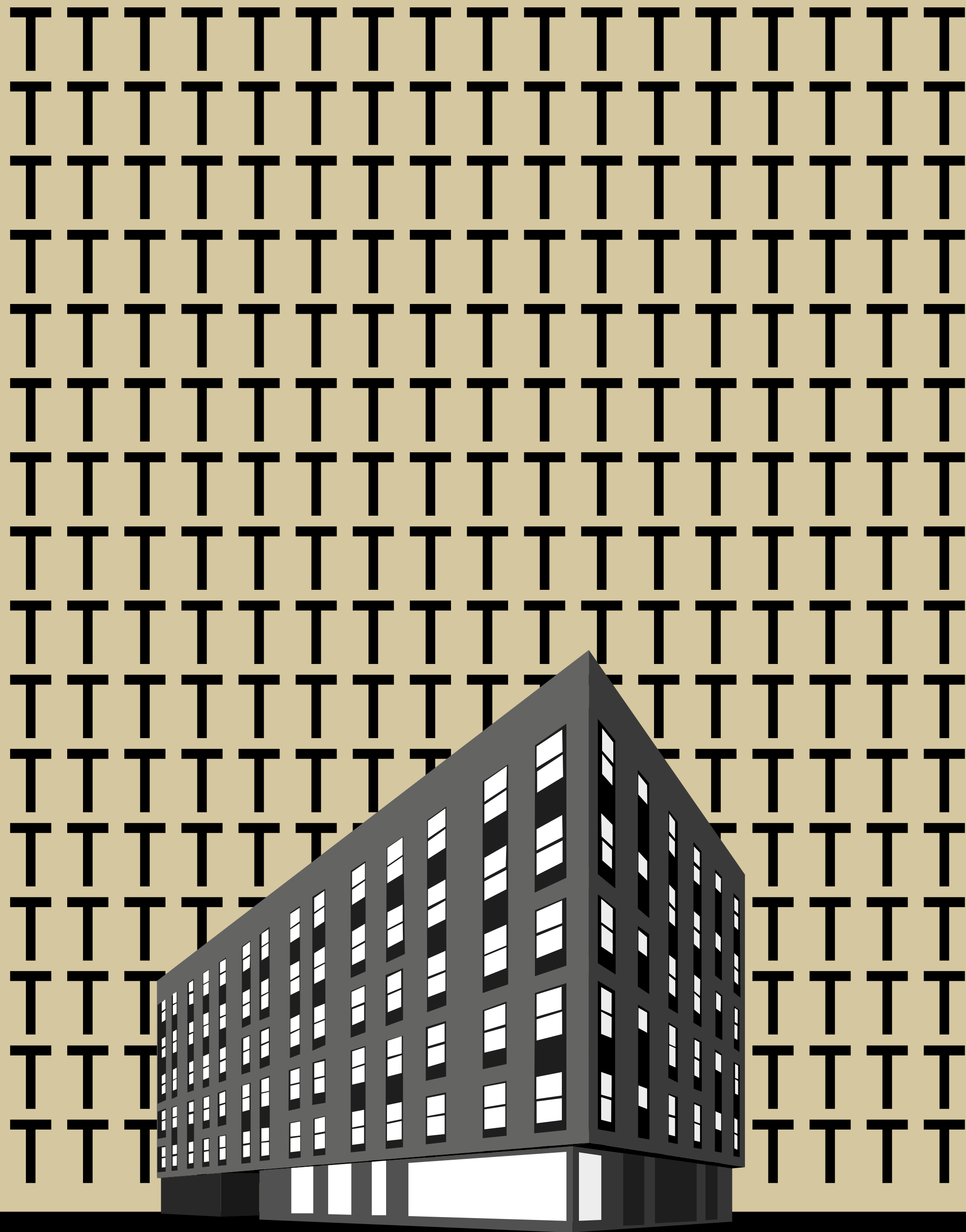
Services:	All mains services connected.
Heating & Hot Water	Gas heating provided via central plant boiler system and metered in every apartment via heat exchange unit.
Electrical:	Brushed stainless steel effect sockets and switches throughout apartments, details on exact layout available on request.
Kitchen:	Contemporary German kitchens with a range of fitted floor and wall units complete with modern square edge high performance laminated work tops as seen on the indicative plans. Includes electric cooker hob and extractor, tall upright fridge/freezer. Washer/Dryer integrated in all apartments – (Type D's located in Store Cupboard)
Sanitaryware:	White Duravit sanitaryware and Hansgrohe brassware, mains pressure hot water.
Doors:	Contemporary doors throughout including brushed stainless steel ironmongery, fire rated doors where applicable.
Skirting & Architrave:	Pencil round skirting and architrave finished in white egg shell paint.
Decoration:	White emulsion to all plastered walls and ceilings.
Ceramic Tiling:	Porcelonosa tiles to bathroom floors and part tiled walls in wet areas.
Flooring:	Laminate to hallway, kitchen and lounge. Carpets in all bedrooms.
Door Entry:	Keypad entry with intercom access from apartments.
TV Distribution:	Digital signal distribution to TV point in each apartment.
Telephone & Data:	Telephone/data cable to a single outlet in each apartment.
Developer:	<a href="http://www.elevatepropertygroup.co.uk">www.elevatepropertygroup.co.uk</a>
Sales Agent:	<b>EMPIRE LETTINGS &amp; PROPERT MANAGEMENT</b> T - 0121 514 8850 <a href="http://www.empirelpm.com">www.empirelpm.com</a>

Photography by Tom Bird & Jan Sedlacek  
Copy by Tom Cullen and Katy Drohan

DISCLAIMER — This brochure and the illustrations contained within are designed to give a general idea of the type of product on the development and how it can be decorated and furnished; they are not, however, to be taken as part of the specification or contract. Dimensions are as accurate as is practical, but they may vary depending on the internal finishes. The latest materials are always used and, therefore, certain modifications are always inevitable. Each prospective purchaser should, therefore, check the plans and specification of the product in which they are interested at the Sales Office before making a reservation. Purchasers should obtain the approved postal name of the development from the Sales Advisors upon reservation. The marketing name may not always be retained.



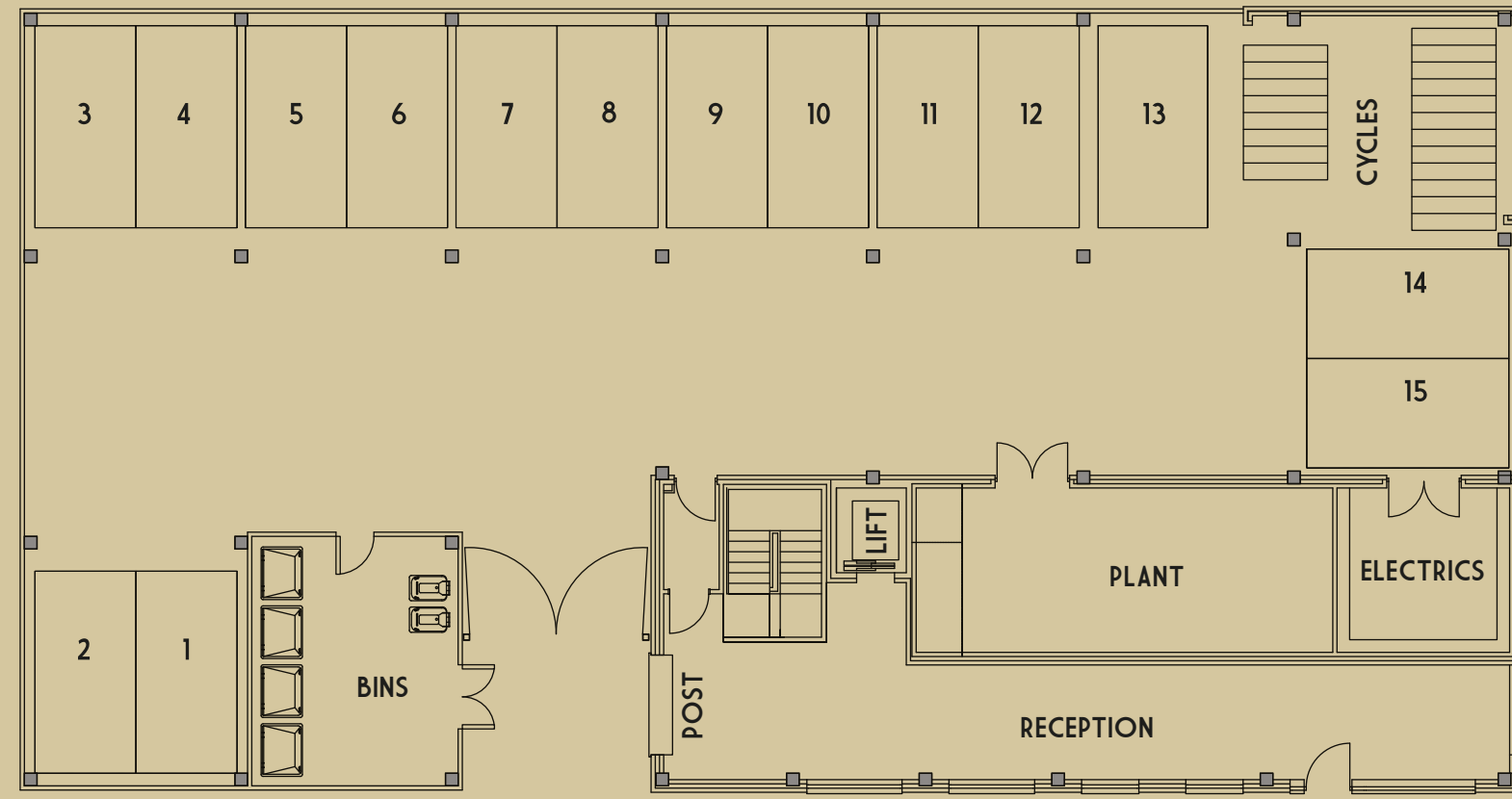




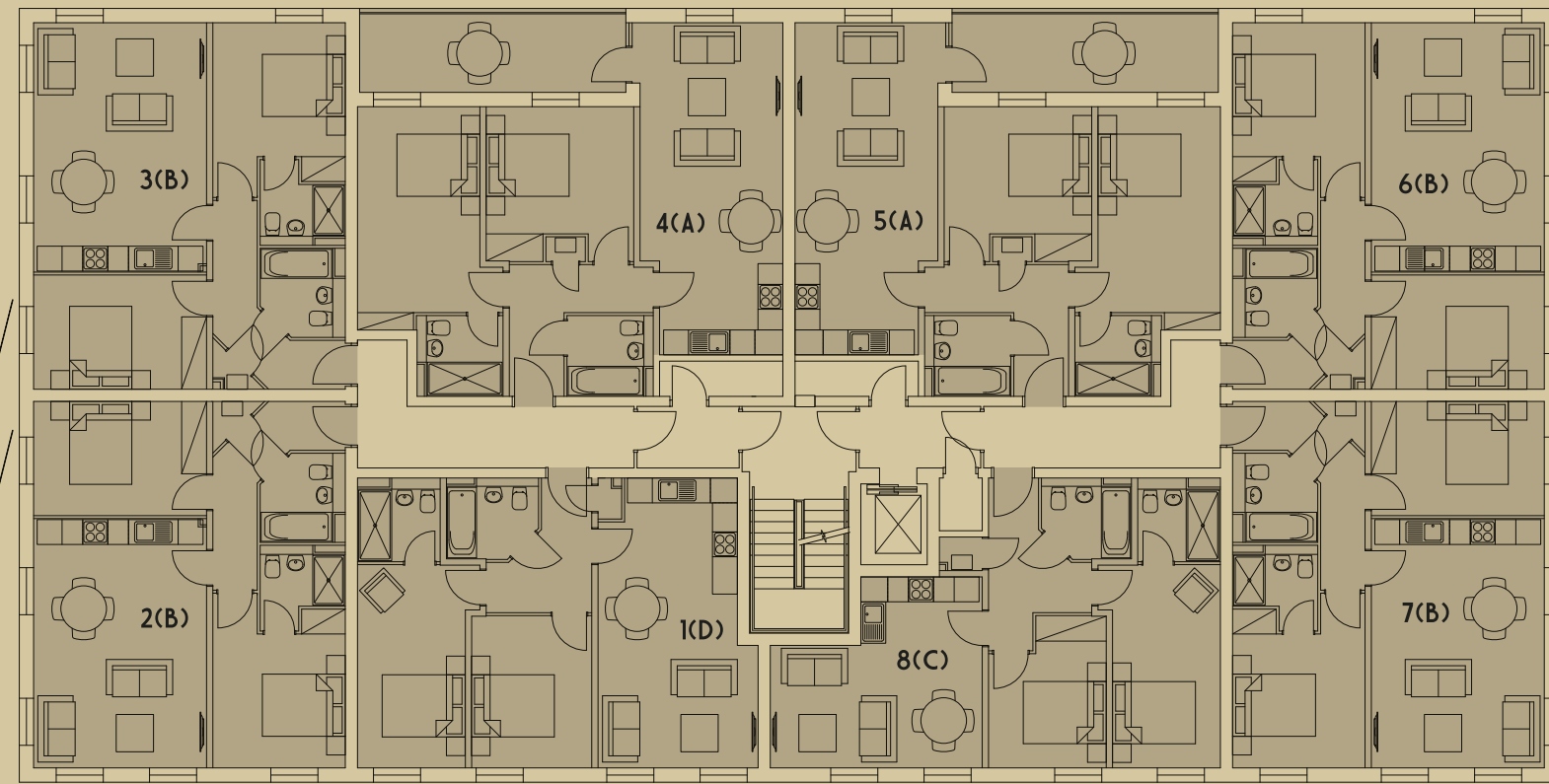
# TENNANT STREET LOFTS



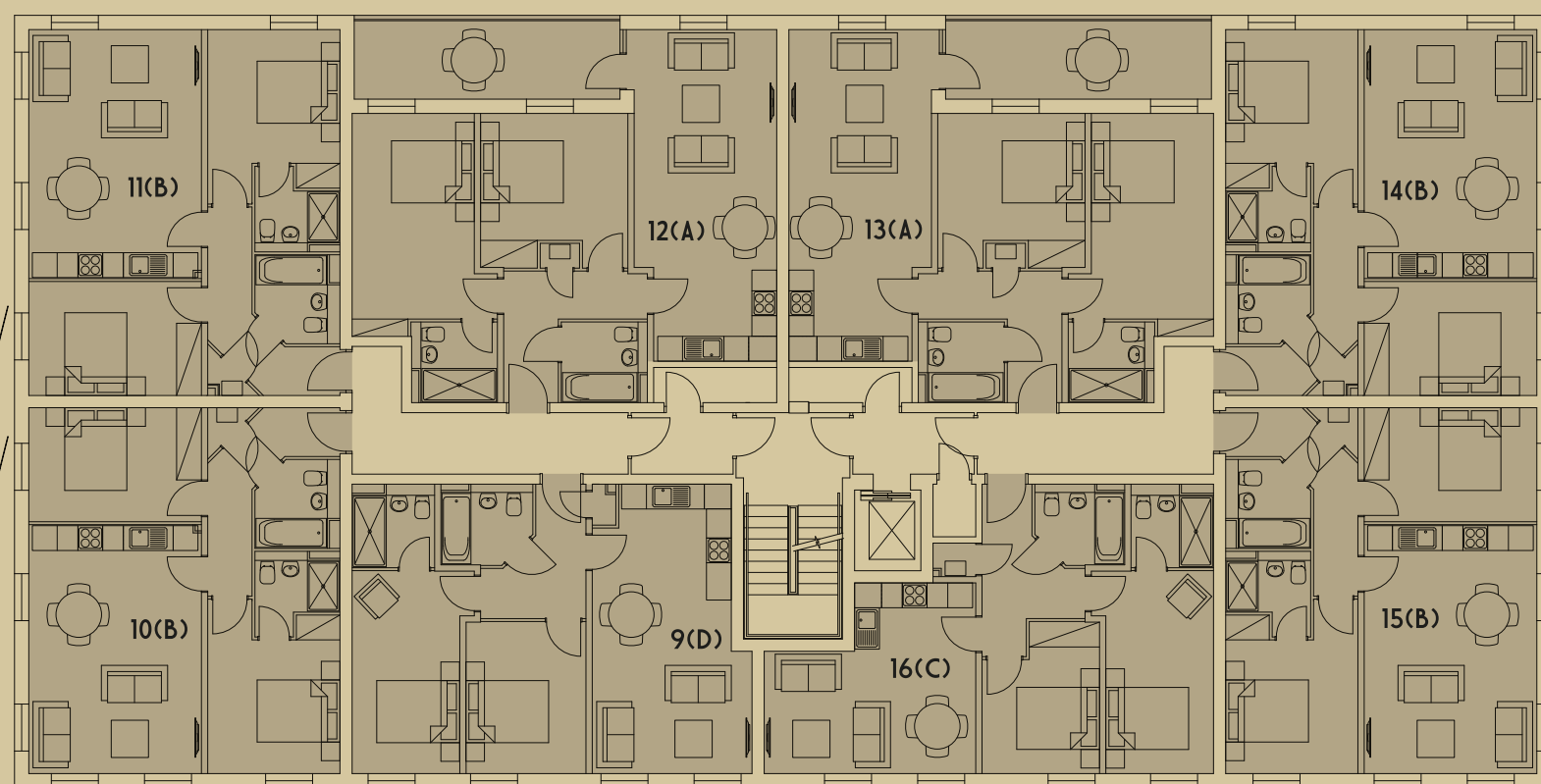
GROUND FLOOR



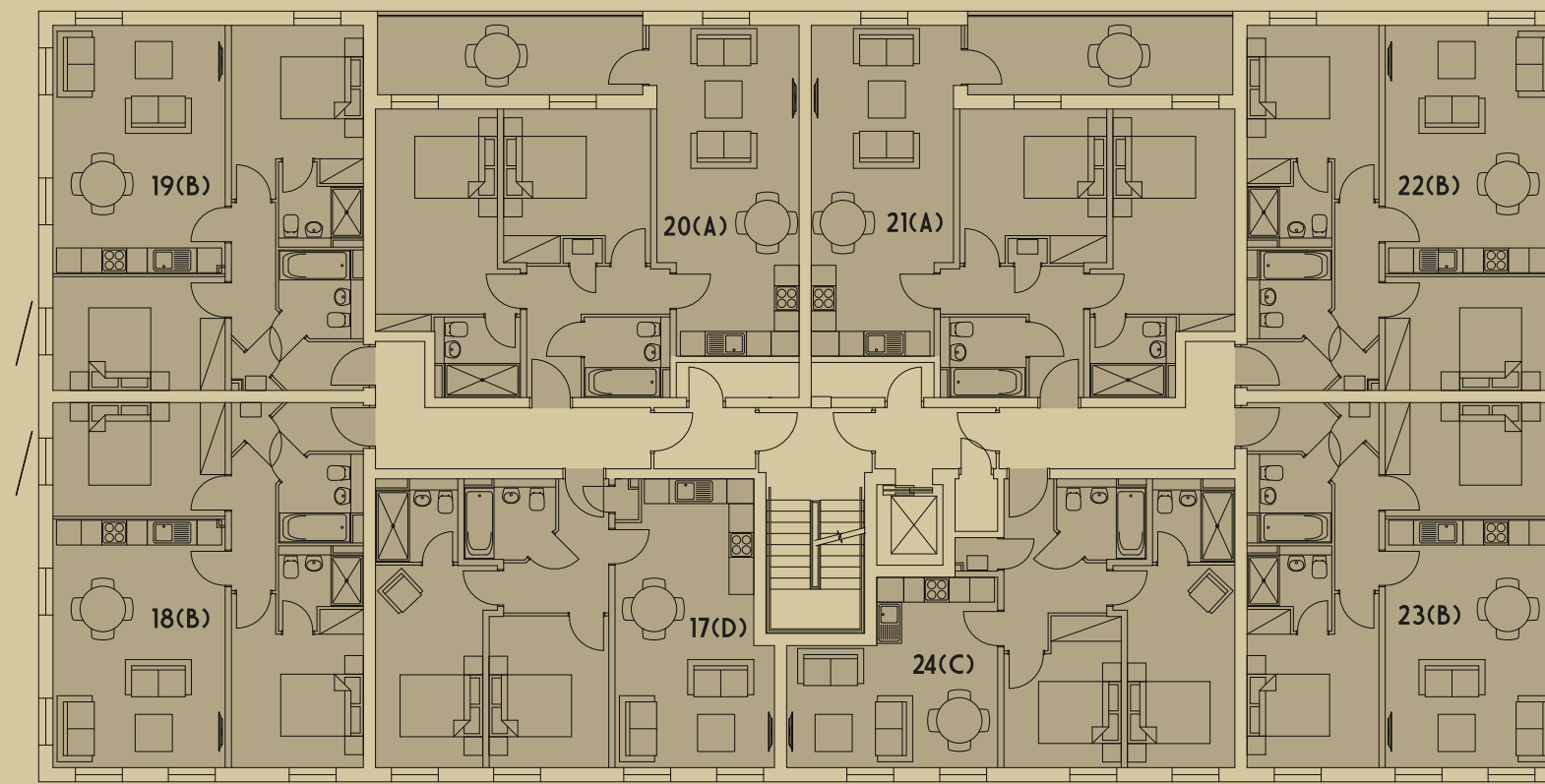
LEVEL 1



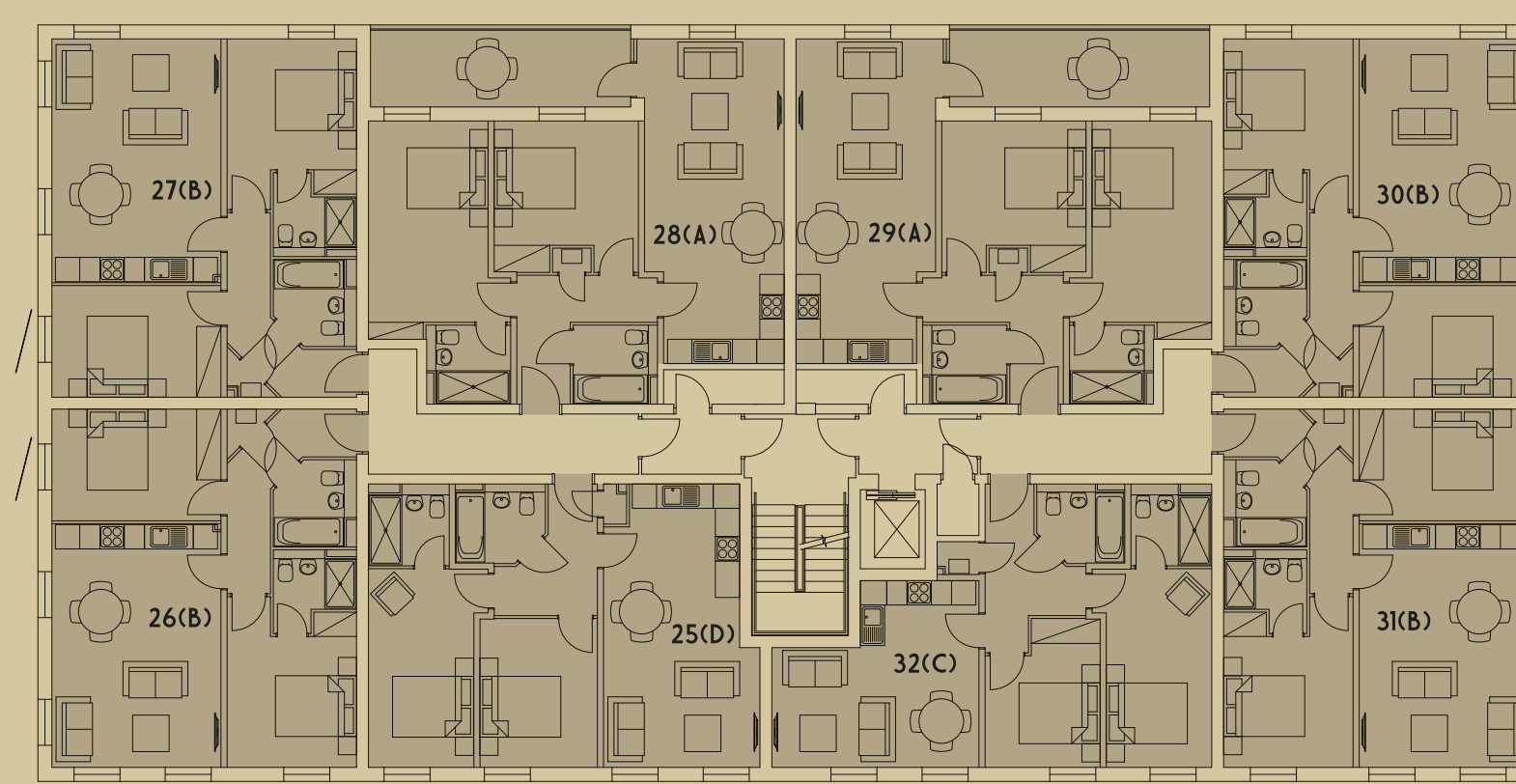
LEVEL 2



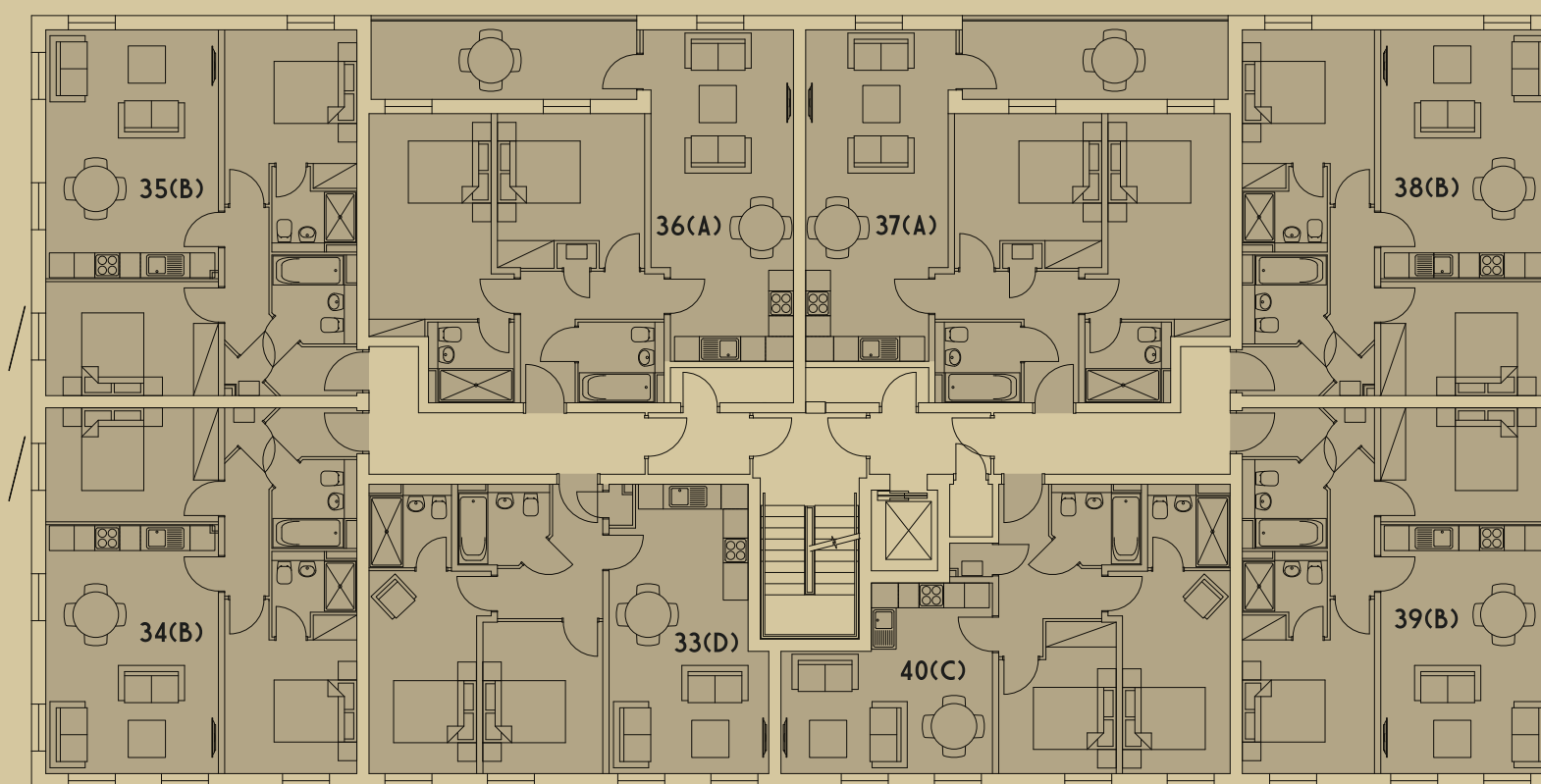
LEVEL 3



LEVEL 4



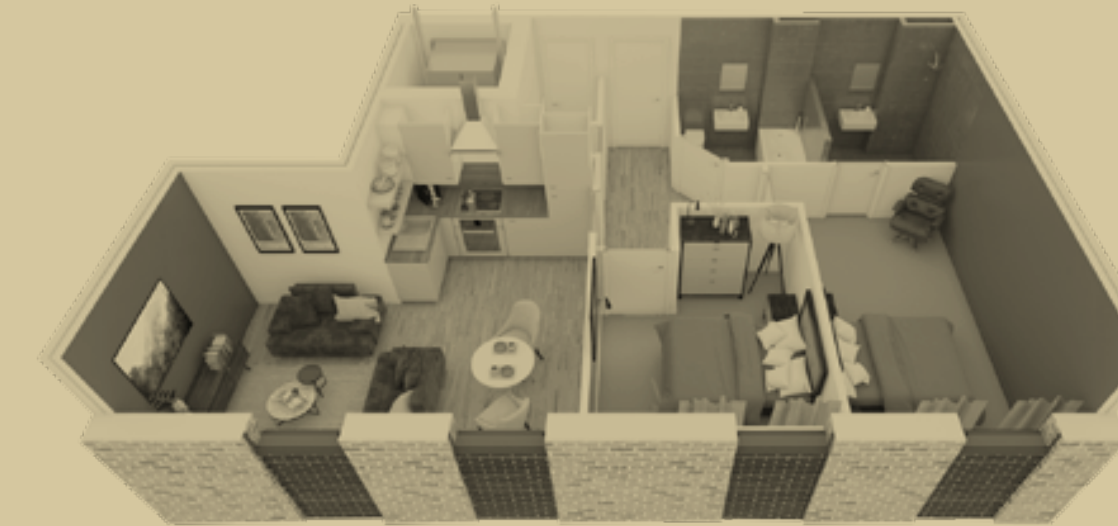
LEVEL 5



TYPE A  
791 SQFT



TYPE B  
715 SQFT



TYPE C  
653 SQFT



TYPE D  
705 SQFT



