



**The Springs, Salters Lane, Lower Moor, WR10 2PD**



# Property Description

This beautifully presented holiday lodge is set within the sought-after Springs Holiday Home Park, nestled in a peaceful rural location between Pershore and Evesham. Measuring approximately 40' x 20', the lodge offers stylish and well-maintained accommodation with a spacious open-plan layout and attractive outdoor space.

The accommodation includes a bright and airy living area which incorporates a kitchen and dining space, opening out onto a private decked terrace that enjoys tranquil woodland views. There are two double bedrooms, one with an en-suite shower room, along with a separate family bathroom and useful storage spaces. The lodge also benefits from gas central heating and double glazing.

Outside, there is an outside parking space, a garden shed, and further decking that leads to the front entrance. The Springs offer access to a range of private leisure facilities including fishing lakes, a heated indoor swimming pool, and a clubhouse.

The park operates a 10-month open season, making it ideal for extended stays or regular getaways.







## Key Features

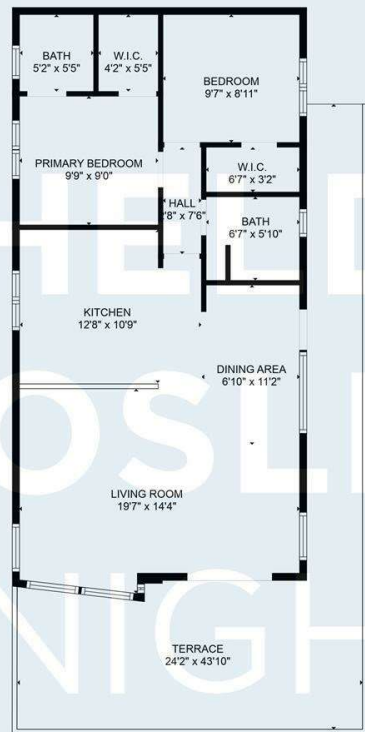
- TWO DOUBLE BEDROOMS
- OPEN PLAN LOUNGE, KITCHEN & DINING
- PRIVATE DECKED TERRACE WITH WOODLAND VIEWS
- EN-SUITE TO PRIMARY BEDROOM
- FAMILY BATHROOM WITH SHOWER OVER BATH
- GAS CENTRAL HEATING THROUGHOUT
- OUTSIDE PARKING
- LOCATED IN THE SPRINGS HOLIDAY PARK
- ACCESS TO FISHING LAKES & LEISURE FACILITIES
- OPEN 10 MONTHS OF THE YEAR

**Guide Price**  
**£150,000**





# SHELDON BOSLEY KNIGHT



**TOTAL: 775 sq. ft**  
**FLOOR 1: 775 sq. ft**  
**EXCLUDED AREAS: TERRACE: 374 sq. ft**

Measurements are calculated accurately but are not guaranteed.



Tenure - Leasehold

Local Authority  
 Wychavon District Council





We routinely refer clients to both our recommended legal firm and a panel of financial services providers. It is your decision whether you choose to deal with these companies. In making that decision, you should know that we receive a referral fee.

**SHELDON  
BOSLEY  
KNIGHT**

LAND  
AND  
PROPERTY  
PROFESSIONALS