



Farleigh Road, Pershore, WR10 1LF

**SHELDON
BOSLEY
KNIGHT**

LAND AND
PROPERTY
PROFESSIONALS

Property Description

A traditional semi detached family home offering well proportioned and well presented accommodation situated in a popular and sought after residential area of Pershore with easy access to local schooling, the town centre, national road and rail networks.

The accommodation in brief comprises:

- Reception Hall
- Lounge
- Dining Room
- Kitchen
- Utility
- Cloakroom
- Three Bedrooms
- Family Bath/Shower Room

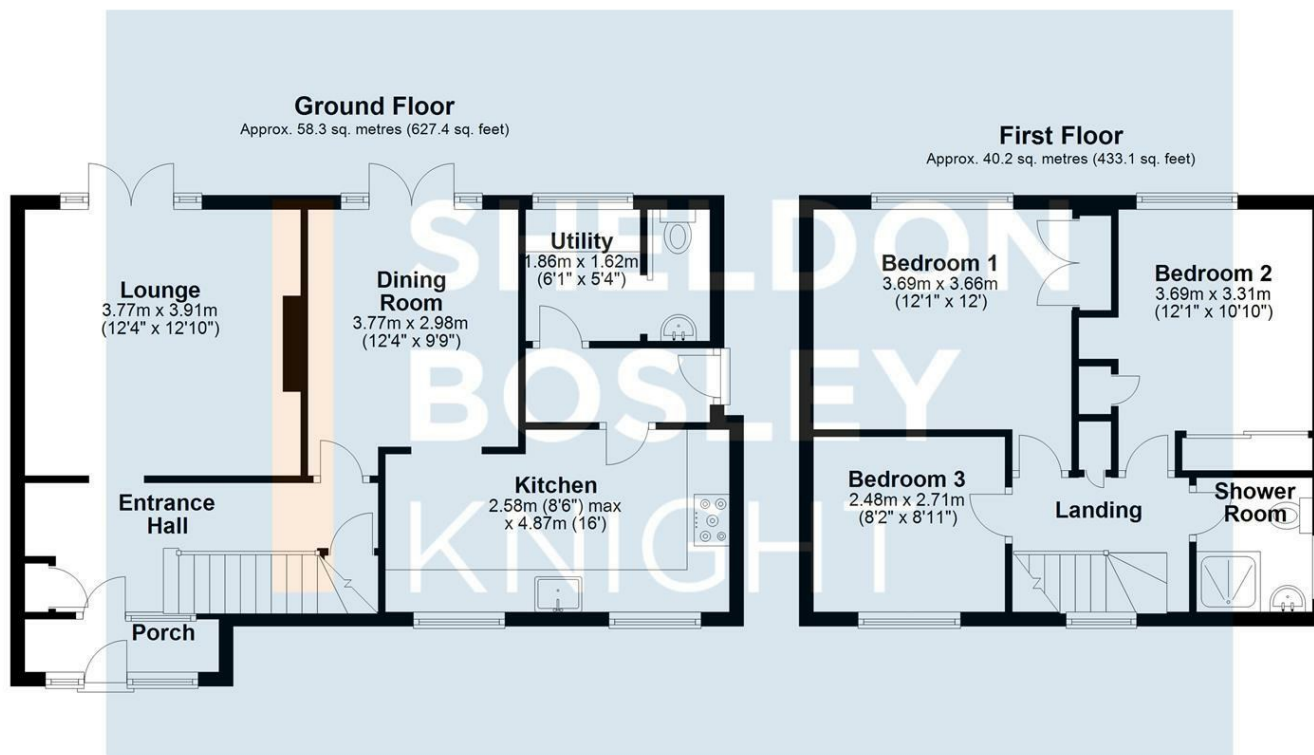
Outside, to the front of the property is a mono blocked frontage providing off road parking for up to 3 cars in turn accessing the front door, side door and a gated rear pedestrian access. In addition, to the side of the property is a shared rear vehicular access.

To the rear of the property is large private predominately lawned garden with shrub borders and a large paved patio area, outside tap and courtesy lights. The rear garden also benefits from rear vehicular access. Private southerly rear aspect.

Services: All mains services are connected. Central heating & double glazing is installed.







Total area: approx. 98.5 sq. metres (1060.5 sq. feet)

All efforts have been made to ensure that the measurements on this floorplan are accurate however these are for guidance purposes only.
Plan produced using PlanUp.

Key Features

- A traditional semi detached family home
- Well proportioned & well presented family home
- Large private garden enjoying a southerly aspect & vehicular access
- Central heating & Upvc double glazing
- Lounge & Dining Room
- Off road parking for up to 3 cars
- Popular residential area
- Easy access to the town centre, national road & rail networks
- Viewing highly recommended

Guide Price
£310,000

EPC Rating - D

Tenure - Freehold

Council Tax Band - C

Local Authority -
Wychavon

We routinely refer clients to both our recommended Legal Firm and a panel of Financial Services Providers. It is your decision whether you choose to deal with these companies. In making that decision, you should know that we receive a referral fee