



Berkeley Street, Worcester, WR1 3JL

**SHELDON  
BOSLEY  
KNIGHT**

LAND AND  
PROPERTY  
PROFESSIONALS



# Property Description

**\*\*NO ONWARD CHAIN\*\*** A fully refurbished period semi detached home offering immaculately presented and well proportioned accommodation with off road parking and private gardens, situated in the highly sought after residential area of Barbourne, Worcester.

The location provides easy access to local shopping facilities, Worcester City centre, national road and rail networks.

The accommodation in brief comprises:

- Lounge with wood burning stove
- Kitchen with built in appliances
- Dining Room
- Basement Reception Room
- WC/Utility Room
- Three Bedrooms (2x first floor with feature fire places & 1x second floor with eve storage spaces)
- Bath/Shower Room

Outside, to the front of the property is a mono blocked frontage providing off road parking in turn accessing the front door. To the rear of the property is a private enclosed lawned garden with two patio areas, courtesy lights and an outside tap.

Services: All mains services are connected, central heating & double glazing is installed.







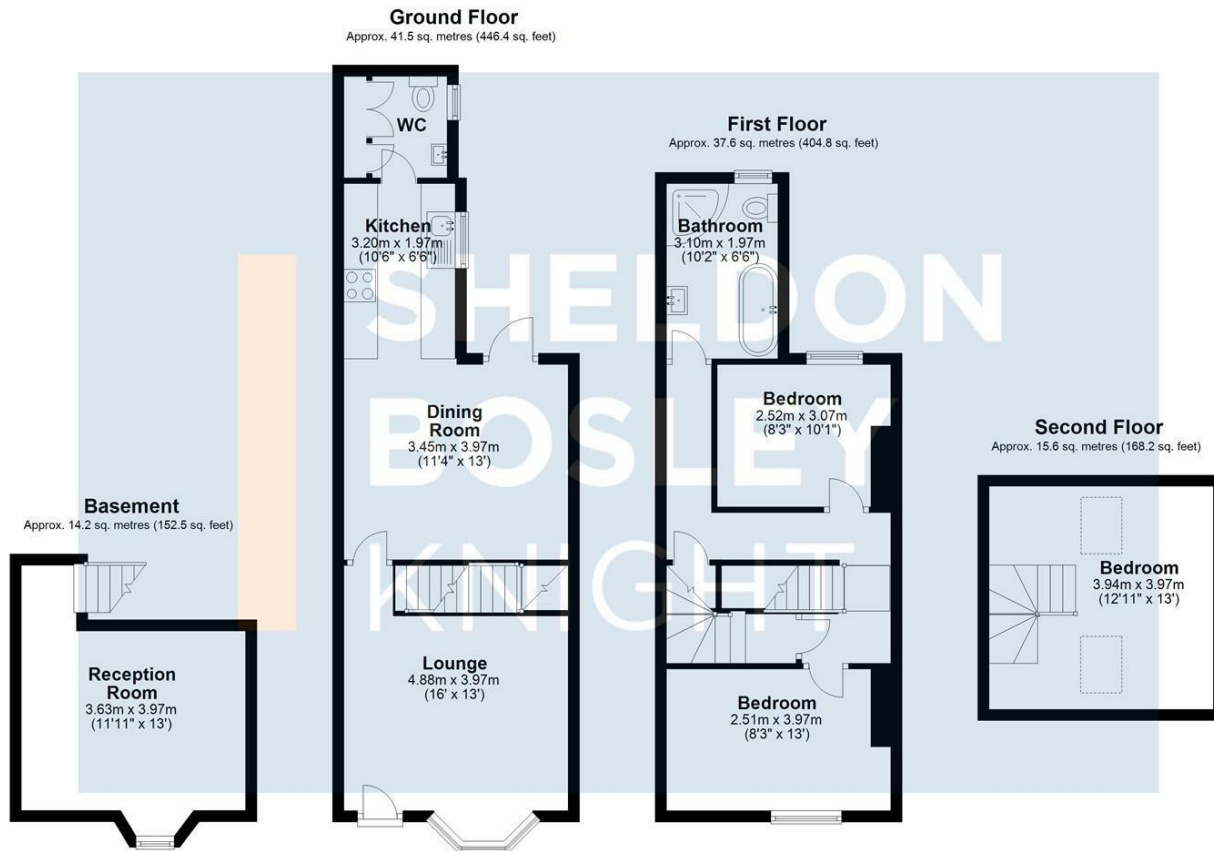
## Key Features

- A refurbished period semi detached home
- Immaculately presented accommodation
- NO ONWARD CHAIN
- Converted Basement & Loft
- Fitted Kitchen with Appliances
- Spacious & well proportioned accommodation
- Off road parking
- Private garden
- Sought after residential area
- Viewing highly recommended

**Guide Price**  
**£369,950**







Total area: approx. 108.9 sq. metres (1171.9 sq. feet)

All efforts have been made to ensure that the measurements on this floorplan are accurate however these are for guidance purposes only.  
 Plan produced using PlanUp.



EPC Rating - D

Tenure - Freehold

Council Tax Band - B

Local Authority  
 Worcester City Council





We routinely refer clients to both our recommended legal firm and a panel of financial services providers. It is your decision whether you choose to deal with these companies. In making that decision, you should know that we receive a referral fee.

**SHELDON  
BOSLEY  
KNIGHT**

LAND AND  
PROPERTY  
PROFESSIONALS