



Sky Court, Worcester, WR3 7QJ

**SHELDON
BOSLEY
KNIGHT**

LAND AND
PROPERTY
PROFESSIONALS

Property Description

A first floor apartment offering well presented and well proportioned accommodation at the head of a private cul de sac within this popular and sought after residential area, the location provides easy access to the city centre, national road and rail networks.

Accommodation in brief comprises:

Reception Hall
Open Plan Lounge Dining Kitchen
Room
Two Bedrooms
Bathroom

Outside, to the front of the property are communal gardens and an allocated car parking space.

Services: All mains services are connected. Central heating & double glazing is installed.

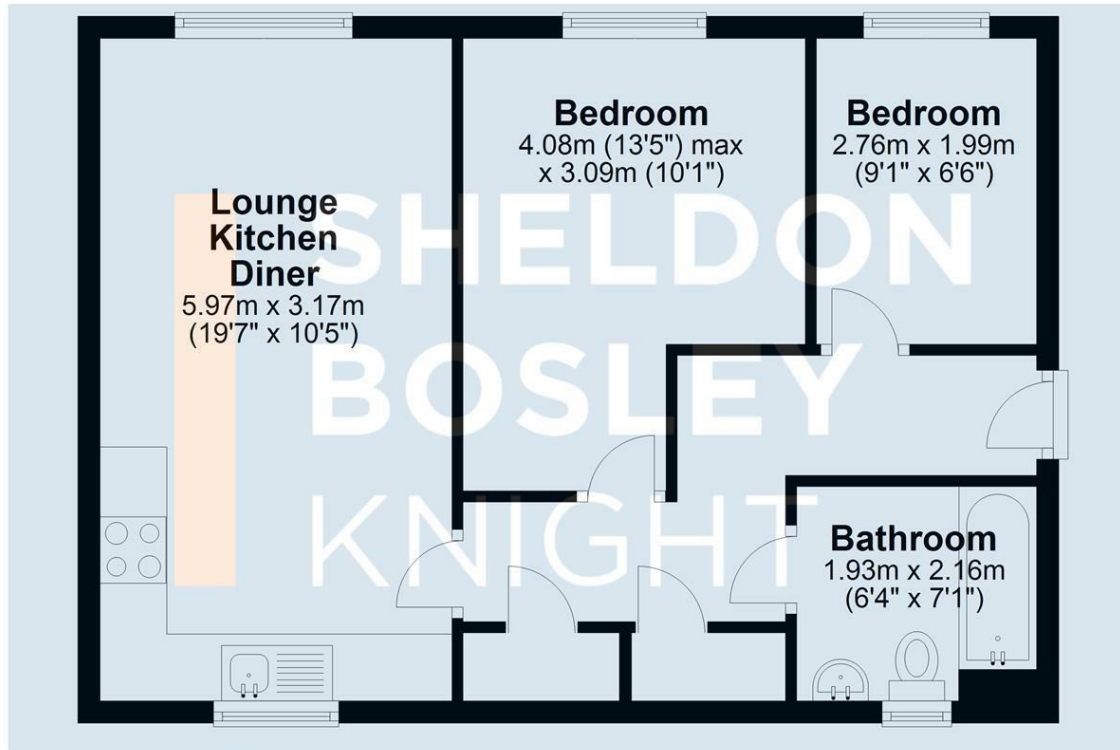
Leasehold: We are advised Lease is 125 years from May 2006. Ground Rent £150 per annum(TBC). Service Charge £1093.40 for the year 04/2024 to 04/2025, paid quarterly (£273.35). TO BE CONFIRMED VIA SOLICITORS.





Ground Floor

Approx. 50.4 sq. metres (542.5 sq. feet)



Total area: approx. 50.4 sq. metres (542.5 sq. feet)

All efforts have been made to ensure that the measurements on this floorplan are accurate however these are for guidance purposes only.
Plan produced using PlanUp.

Key Features

- A first floor apartment
- Spacious & immaculately presented accommodation
- Ideal first time buyers property or investment property
- No onward chain
- Popular and sought after residential area
- Open plan lounge Dining Kitchen
- Two Bedrooms & Bathroom
- Off road parking
- Viewing highly recommended

Guide Price
£140,000

EPC Rating - C

Tenure - Leasehold

Council Tax Band - B

Local Authority -
Worcester City Council

We routinely refer clients to both our recommended Legal Firm and a panel of Financial Services Providers. It is your decision whether you choose to deal with these companies. In making that decision, you should know that we receive a referral fee