



HALSBURY



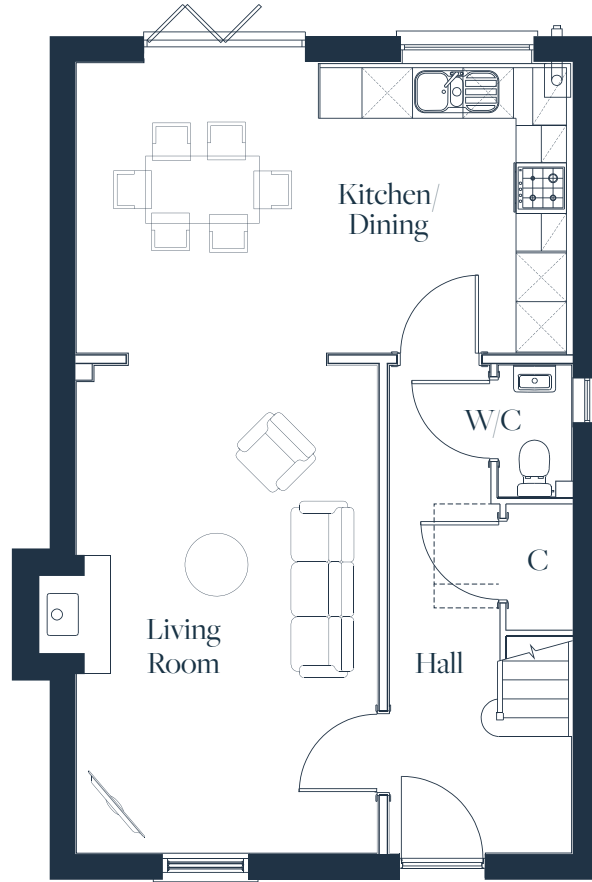
Computer generated image



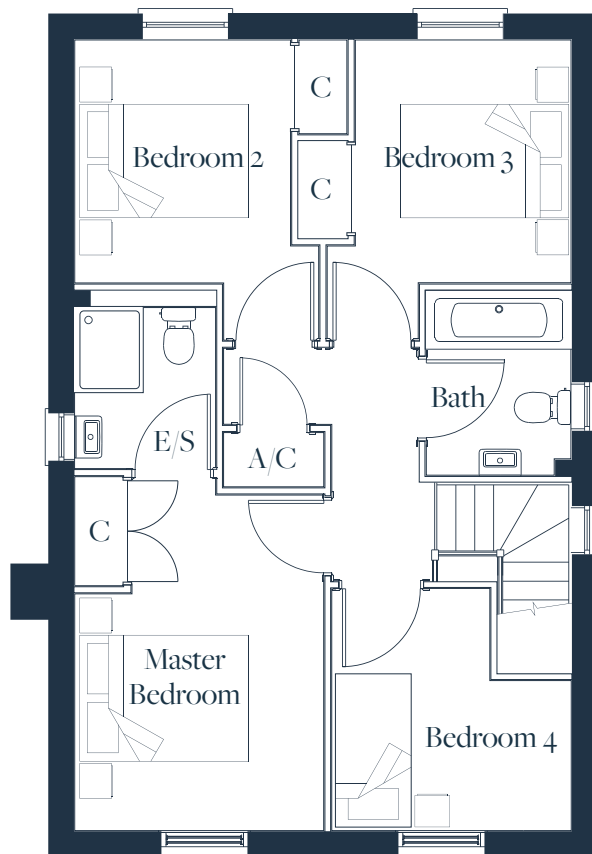
THE RAVENINGHAM

Overall size - 111 sq m, 1195 sq ft

Kitchen/Dining	5860mm x 3440mm	19'3" x 11'3"
Living Room	5760mm x 3560mm	18'11" x 11'8"
<hr/>		
Master Bedroom	4190mm (max) x 2930mm	13'9" (max) x 9'8"
Bedroom 2	3540mm (max) x 2540mm	11'8" (max) x 8'4"
Bedroom 3	3540mm (max) x 2540mm	11'8" (max) x 8'4"
Bedroom 4	2850mm x 2160mm (max)	9'4" x 7'1" (max)



GROUND FLOOR



FIRST FLOOR