



HALSBURY



Computer generated image

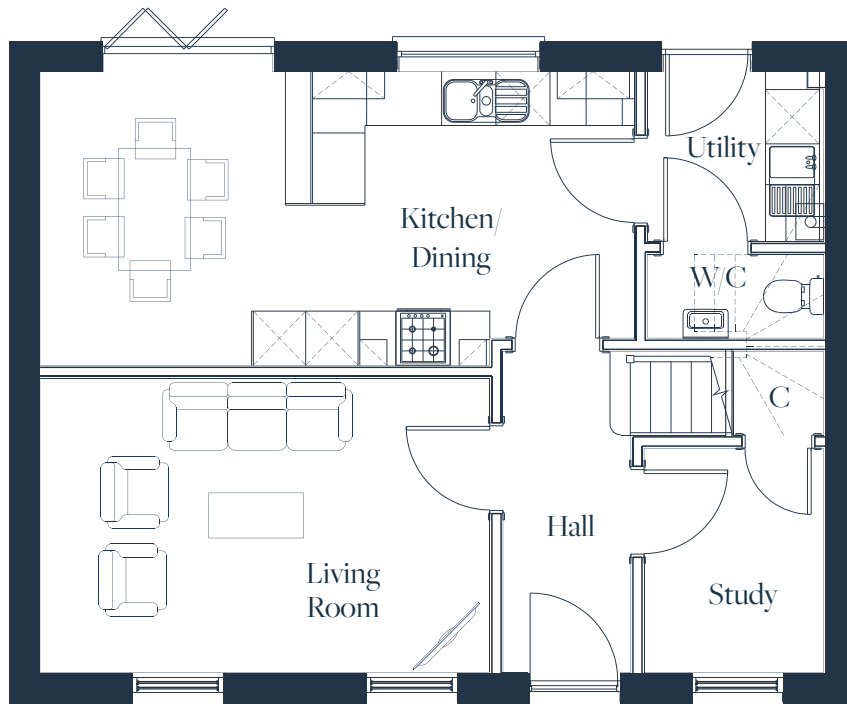


THE HOLKHAM - A

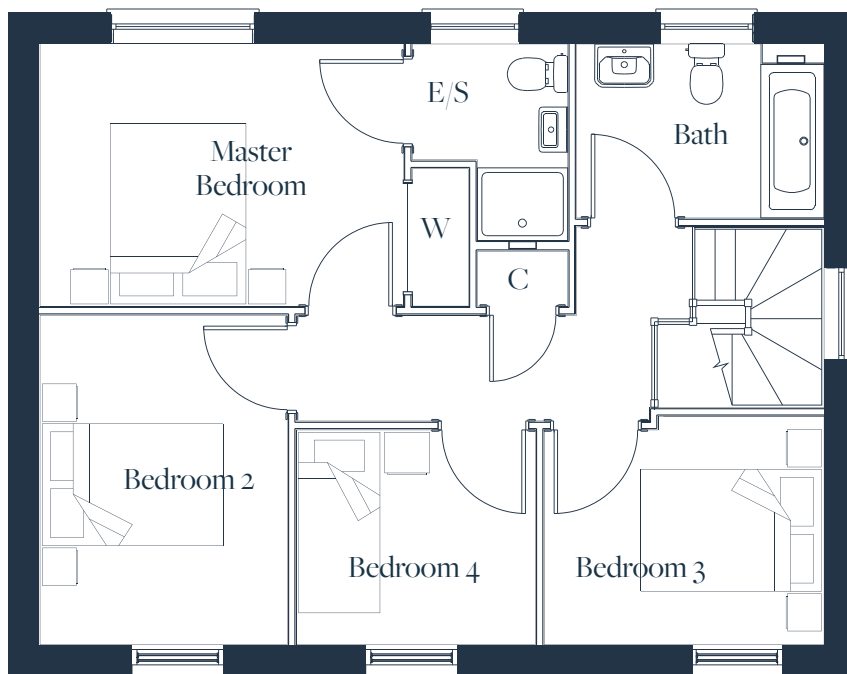
Overall size - 117 sq m, 1257 sq ft

Kitchen/Dining	6580mm x 3520mm (max)	21'7" x 10'8" (max)
Utility	1950mm x 1880mm	6'5" x 6'2"
Living Room	4980mm x 3250mm	16'4" x 10'8"
Study	2480mm x 1990mm	8'2" x 6'10"
<hr/>		
Master Bedroom	4020mm x 2900mm	13'2" x 9'6"
Bedroom 2	3650mm x 2740mm	12'0" x 9'0"
Bedroom 3	3100mm x 2530mm (max)	10'2" x 8'4" (max)
Bedroom 4	2640mm x 2380mm	8'8" x 7'10"

Note – Side Entrance to Elevation B Dining area, additional window to master bedroom



GROUND FLOOR



FIRST FLOOR