



Cottage (EPC Rating: E)

HONEYSUCKLE COTTAGE, GLOUCESTER ROAD, CIRENCESTER, CIRENCESTER, GL7

Offers In Excess Of

£375,000

CANNON ESTATES
SALES & LETTINGS



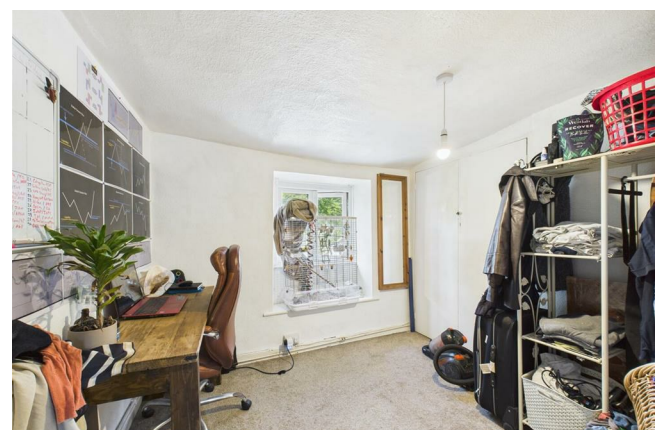
3 Bedroom Cottage located in Cirencester

Set on the sought-after Gloucester Road in Cirencester, this charming three-bedroom cottage offers the perfect blend of character and convenience. Spread across three storeys, the home is filled with period features and modern touches, making it ideal for those seeking a cosy retreat or a well-located family home.

The inviting reception room is full of warmth and character, featuring a beautiful open fireplace and original exposed beams that highlight the cottage's historic charm. The layout is well-considered, providing a comfortable and welcoming living space.

To the rear, a galley-style kitchen makes efficient use of space, offering all the essentials for day-to-day living. Though compact, it is functional and practical, with direct access to the outdoor area.

Upstairs, the property offers three well-proportioned bedrooms arranged over two floors, each with its own sense of privacy and charm. The recently updated bathroom has been tastefully modernised in a neutral style, offering a clean and practical space suited to everyday use.

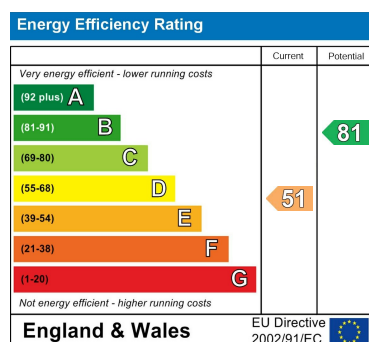




Council Tax Band

C

Energy Performance Graph



Call us on

01285 706900

info@cannon-estates.co.uk

<https://www.cannon-estates.co.uk/>

Agents Note: Whilst every care has been taken to prepare these particulars, they are for guidance purposes only. All measurements are approximate and are for general guidance purposes only and whilst every care has been taken to ensure their accuracy, they should not be relied upon and potential buyers are advised to recheck the measurements.

CANNON ESTATES
SALES & LETTINGS